



# Network Equipment

Sales Catalogue



13 10 87

[westernpower.com.au/network-equipment-sales](http://westernpower.com.au/network-equipment-sales)

Cables | Streetlights and luminaires | Transformers | Switchgear | Transmission equipment



Western Power supplies a large range of industrial, commercial and domestic network equipment (distribution and transmission) at competitive prices. We source and supply equipment including cable, transformers and switchgear, line hardware, underground power accessories and streetlights.

### Why buy from Western Power?

- Largest supplier of electrical network equipment in WA
- Significant warehousing capacity allows us to hold large volumes of stock - offering short lead times on a range of items
- Pre-approved and compliance-tested equipment that conforms to the network
- Wide selection of electrical network components for common land development and connection projects
- Knowledgeable and experienced sales team
- Credit facilities
- Volume discounts

**Contact us on**  
**Sales Team on 13 10 87 (weekdays 8:00am - 4:00pm)**



# Contents

## Network Equipment Sales

Company Profile	4
Overview	5

## Product Categories

Distribution cables	6
Streetlights and luminaires	7
Transformers	8
Switchgear	9
Transmission equipment	10

## Network Equipment for Common Projects

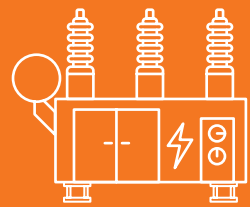
Large load connection	11
Large commercial	12
Small private estate	13
Residential park	14

## Buying from Western Power

Warehousing and supply	15
Becoming a customer	15



Western Power builds, maintains and operates the electricity network in the south west corner of Western Australia.



**150**

transmission substations



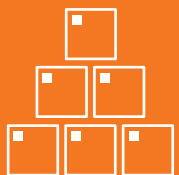
**103,177km**

network cable



**823,447**

poles and towers



**1,200**

product lines



**44,000m<sup>2</sup>**

warehousing capacity

Due to the significant scale of our network, we are one of the largest suppliers of electrical network equipment in Western Australia.

## Overview



### High voltage transmission

Western Power supplies QA tested equipment for transmission projects such as new generation connections, including HV cable, substation equipment, switchgear, poles and towers, and underground power accessories.



### Streetlights and luminaires

We stock a wide range of non-decorative and decorative designs which can be coloured to match your project. We also supply longer-lasting, efficient LED lighting solutions.



### Transformers

Western Power can supply a wide range of 3 phase & Single Phase Voltage Distribution Transformers for most commercial projects.



### Switchgear

Switchgear equipment is a combination of circuit breakers, fuses and switches (circuit protection devices) that are used to protect, control and isolate electrical equipment. The equipment is mounted in a metal cabinet.



### Cables & cable accessories

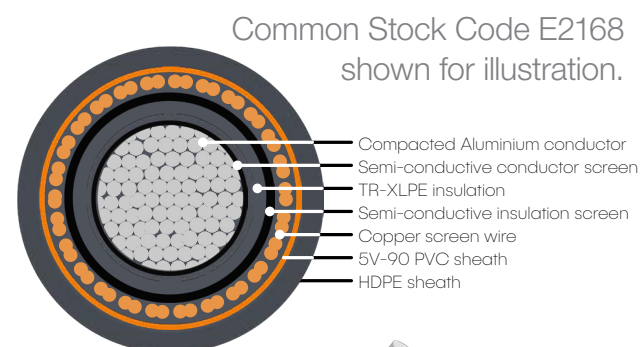
Western Power can supply a comprehensive range of underground distribution cables (0.6-22kV) and accessories that ensure high reliability and service life.

## Product Categories

### Cable and cable accessories

**Low-voltage (LV)** and **Medium-voltage (MV)** cables and cable accessories are one of Western Power's biggest selling product categories. We source cables from a range of Australian suppliers, and all inventory items are pre-approved for use within the network. For a complete list of cable and cable accessories, see our **Distribution Design Catalogue**.

#### Medium-voltage cable (12.7/22kV)

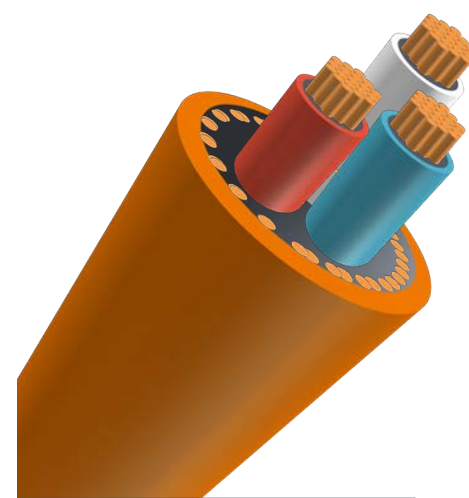
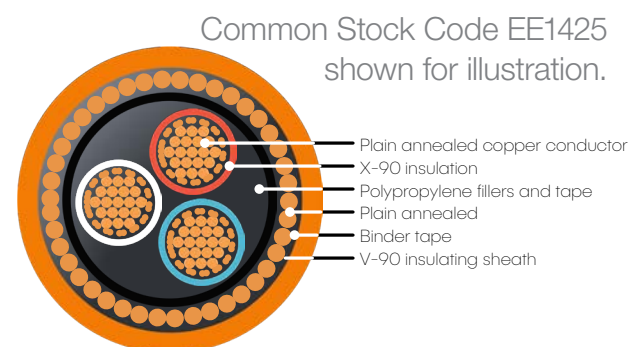


Underground MV distribution cable connects the development to the Western Power network through a transformer.

#### Cable accessories

Western Power also carries a large range of cable joints, cable terminations and supporting accessories to be used with low-voltage, medium-voltage and high-voltage cables. There are many different types of accessories and the right product will depend on the size and configuration of the cable, the voltage rating, insulation type and the cores to be jointed.

#### Low-voltage cable (0.6/1.2kV)



Underground LV distribution cable connects to the pillar and is used as the final supply to residential dwellings.

## Product Categories

### Streetlights and luminaires

Western Power stocks a range of **streetlights** which can be colour matched for individual projects, including residential subdivisions, commercial developments, recreational pathways and parks.

#### Streetlight components



##### Luminaire

LED options available in a wide range of lumens to suit the specific conditions

##### Outreach

Decorative and non-decorative outreach units in several sizes, that can be powder-coated to any colour of choice

##### Pole

Decorative and non-decorative poles available in several sizes. Poles are galvanised, and can be powder-coated to any colour of choice

##### Base

Streetlight bases are in-ground mounted and can be impact-absorbing for safety in high traffic areas

##### Design

6 decorative designs



##### LED Luminaire Range

17W - 155W in decorative range and 20W - 170W in standard



##### Pole Sizes

Poles are stocked and supplied in standard sizes from 6.5m - 12.5m



##### Colours

9 standard colours with an option to order custom colours



#### Our new LED range

We offer a range of decorative and non-decorative LED streetlights. LEDs require less maintenance, last a lot longer than standard lighting, are cheaper to run, and reach full brightness instantly.

PHILIPS 'ROADFLAIR' LED SERIES





## Product Categories

### Distribution Transformers

Western Power supplies 315kVa, 630kVa and 1000kVa distribution transformers. Our transformers are designed to suit **our modern network** and are manufactured to meet Australia's demanding conditions and a variety of power distribution needs.

#### Common transformer types



##### XA2420 (315kVa)

3-phase modular package substation (MPS) distribution transformers.

**Specs:** 24 kV Max, 22 kV Nom, MPS 3-Ph, 22/0.44 kV, 315 kVA Dyn1, ONAN, 50 HZ, IMP 4%.



##### XA2420 (630kVa)

3-phase modular package substation (MPS) distribution transformers.

**Specs:** 24 kV Max, 22 kV Nom, MPS 3-Ph, 22/0.44 kV, 630 kVA Dyn1, ONAN, 50 HZ, IMP 4%



##### XA2420 (630kVa)

3-phase modular package substation (MPS) distribution transformers.

**Specs:** 224 kV Max, 22 kV Nom, NON MPS 3-Ph, 22/0.44 kV, 1000 KVA Dyn1, ONAN, 50hz, IMP 6%

#### Features

- Compact designs
- Several layouts and switchgear options
- Sealed construction to prevent the entry of moisture
- High quality materials and assembly processes
- Oil sight glass with floating ball allows oil check before energising the transformer
- Designed to conform to Western Power network standards and Australian conditions
- Minimum Energy Performance Standards (MEPS) compliant.

## Product Categories

### Distribution Switchgear

Distribution switchgear, or **'Ring Main Units' (RMUs)** are a centralised collection of circuit breakers, fuses and switches (electrical circuit protection devices) that function to control, protect and isolate electrical equipment for maintenance and in case of emergencies. Western Power's switchgear units are mounted in metal structures. Multiple units can be installed, depending on the size of the development, in switchgear 'line-up' or 'assembly' format.

#### Products available

**The RMU is a factory assembled, metal enclosed set of switchgear - used at the load connection points of the distribution network.**

The RMUs include two switches that can connect the load to either, or both main conductors, and a fusible switch or circuit breaker and switch that feeds the distribution transformer.

The RMU is housed inside a kiosk, and we supply a range from 2 circuits to 5 circuits in mechanical and automated switching.

**Standard:** IEC 62271-200

**Rated voltage:** Up to 24 kV

**Frequency:** 50 or 60Hz

**Rated current busbar:** 630A

**Loss of service continuity:** LSC 2A

#### RM6 Unit



#### Features

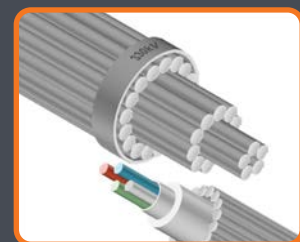
- The RM6 has been 100% designed by Schneider Electric
- Solution fully type tested by independent international laboratories
- Safety & reliability: Internal arc compliant in accordance with standards
- Efficient and simple installation, and site upgradable (extensible, motorisation)
- 'Connected' in compliance with latest cyber security norms, with scalable options such as network management, condition monitoring, power management, and remote protection.



# Product Categories

## Transmission Equipment

The product categories below are a simplified overview of the standard transmission connection equipment. Additional requirements can be discussed if other connection options are required.



### Overhead Conductors

Western Power can source High Voltage (132kV 330kV) overhead conductor and hi speed optical conductor for power and data transmission.



### Underground cable

Western Power can source HV (132kV 330kV) cable for underground systems. Supporting components include terminations, joints and monitoring system components.



### Poles and towers

Structures are designed to suit the requirements and conditions of each transmission project. Our engineers and sales team can assist in sourcing the right equipment.



### Substation

The substation transforms electricity from the generation plant to Western Power's transmission voltages. Substations are designed to suit the requirements and conditions of each project.



### Other equipment

Supporting equipment is dependent on the project, and may include switchgear, circuit breakers, meters and communication systems, e.g. Supervisory and Data Acquisition (SCADA).



Yandin wind farm substation

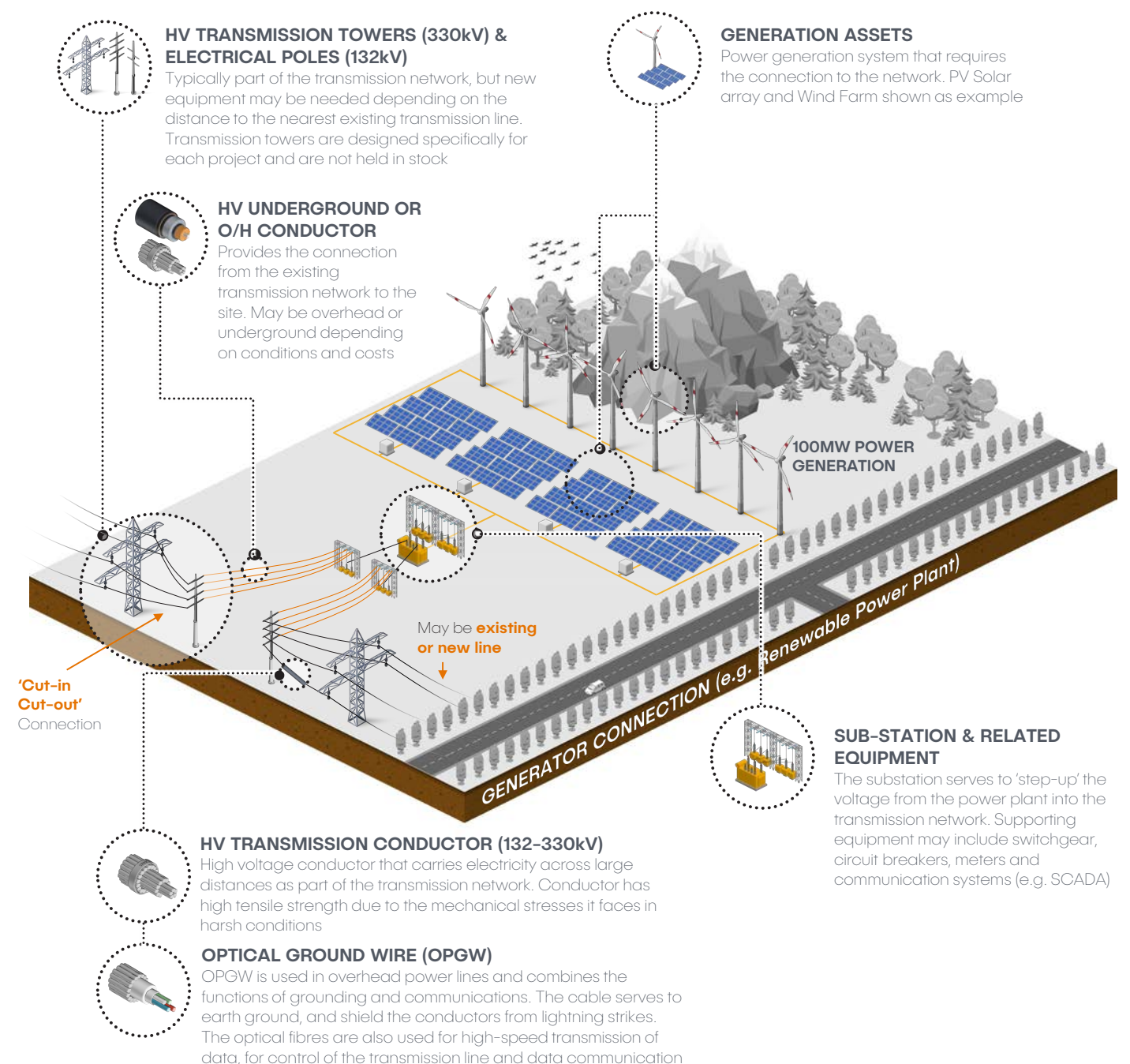
# Project Overview – Components

## Generator connection

Western Power sources and supplies a large range of electrical equipment for HV Transmission projects, including cable, poles, towers, substations and supporting control equipment.

## About load connection projects

Load connection projects often involve modifications to the existing electricity network, which can require the installation of new network equipment.





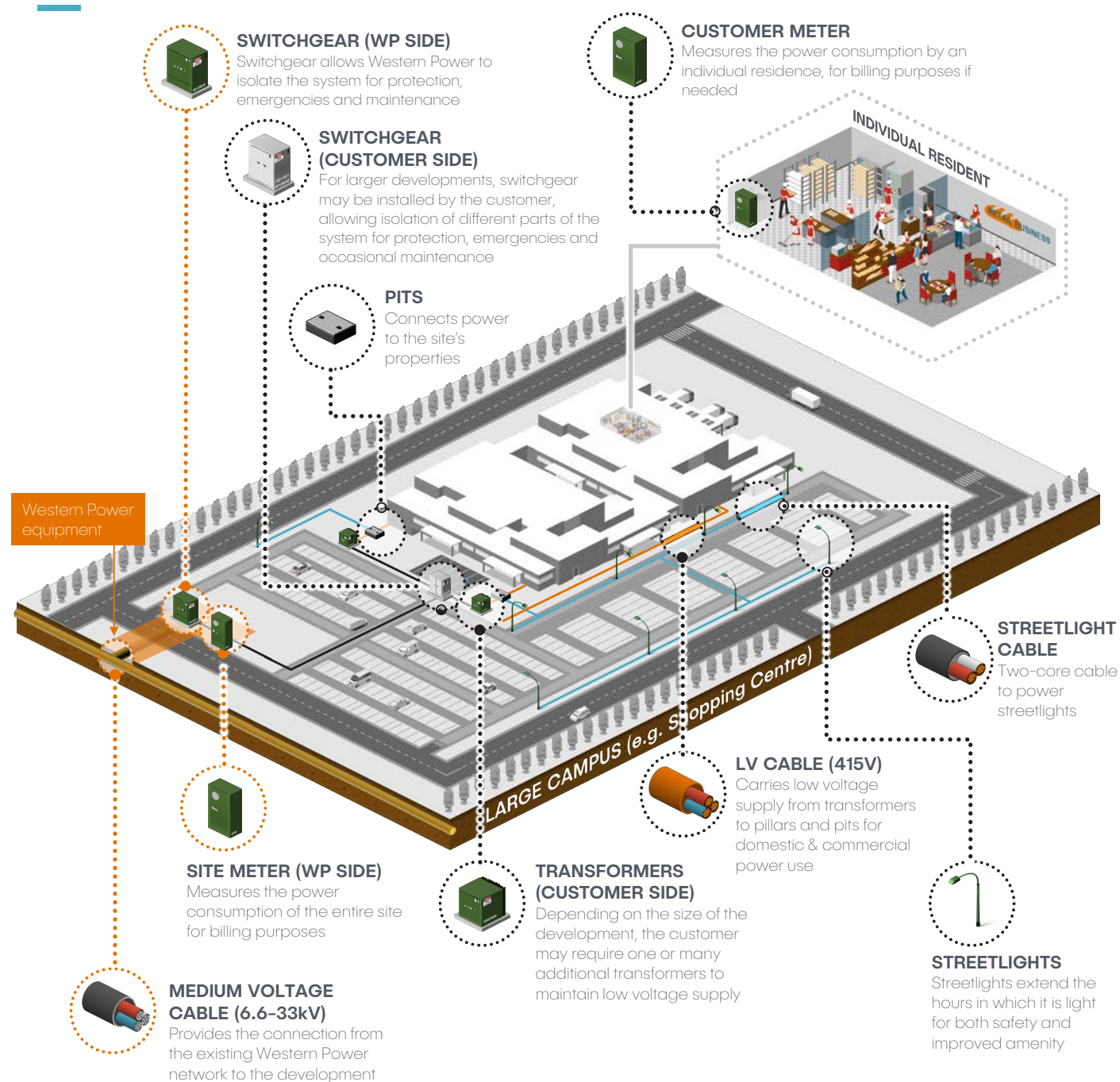
# Project Overview – Components

## Large commercial

Western Power supplies a large range of electrical equipment for Medium Voltage distribution projects, including cable, transformers and switchgear, line hardware, underground power accessories and streetlights.

### About large commercial projects

Large commercial projects comprise higher power requirements due to the many buildings and supporting electrical infrastructure. Projects of this kind include shopping centres, airports, university campuses etc. and typically involve a connection to several properties or dwellings. There is also the potential for additional connections to other powered equipment; such as streetlights.



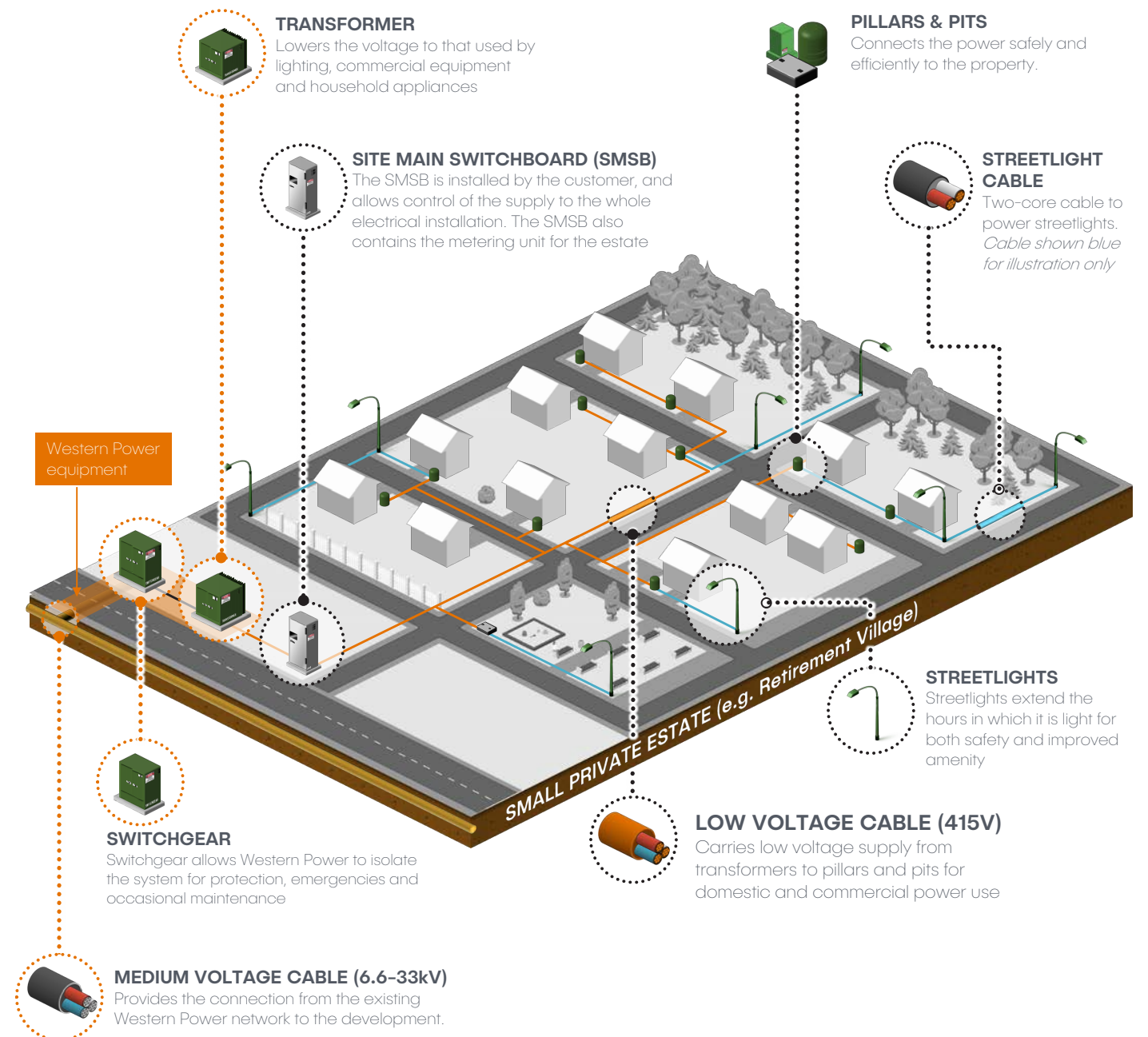
# Project Overview – Components

## Small private estate

Western Power supplies a large range of electrical equipment for Medium Voltage distribution projects, including cable, transformers and switchgear, line hardware, underground power accessories and streetlights.

### About small private estates

Small private estates typically involve a connection to several properties or dwellings with the potential for additional connections to other powered equipment such as streetlights.



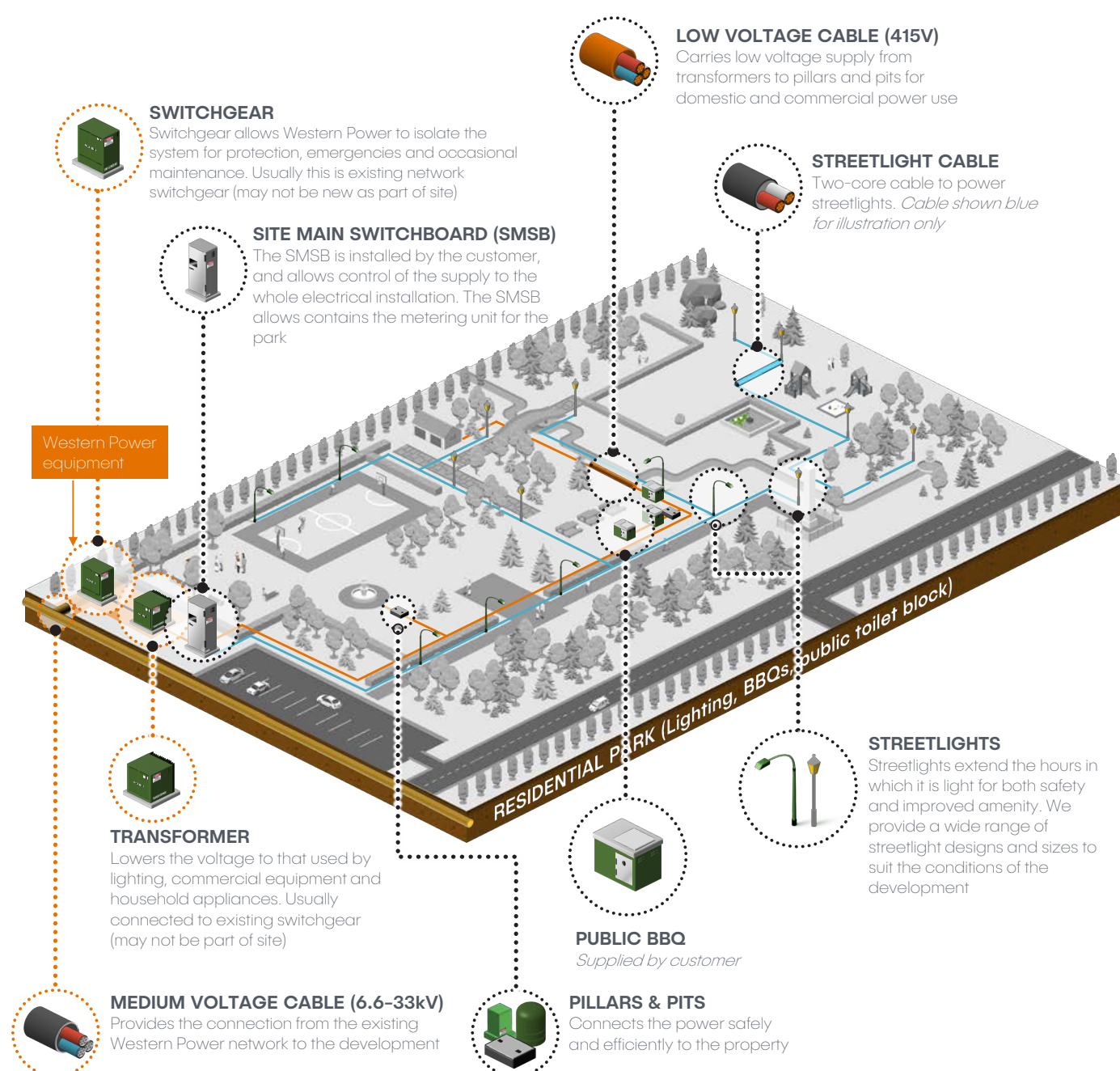
# Project Overview – Components

## Residential Park

Western Power supplies a large range of electrical equipment for Medium Voltage distribution projects, including cable, transformers and switchgear, line hardware, underground power accessories and streetlights.

### About residential parks

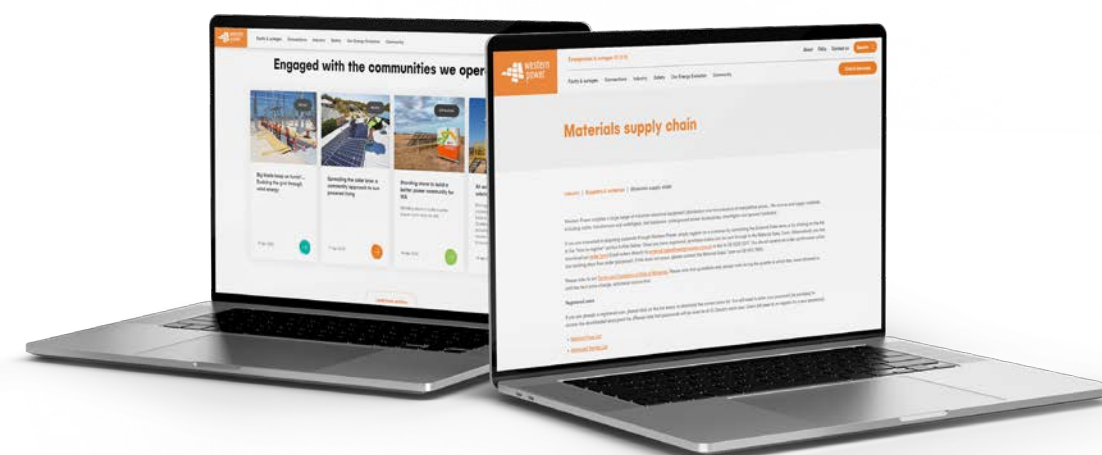
Residential and community parks do not require high energy volumes, and usually comprise lighting and community related equipment only - such as decorative lights, public BBQs, water fountains and public toilets. Projects of this nature typically do not require new connection equipment (e.g. transformers) and can usually be connected to existing network assets.



# Buying from westernpower

## Warehousing and supply .....

Western Power's warehouse in Jandakot carries a range of product lines, and has substantial inventory on hand that can be delivered quickly, to anywhere in the state.



For more info, visit [westernpower.com.au/network-equipment-sales](https://westernpower.com.au/network-equipment-sales)

## Becoming a customer

If you are keen to buy network equipment from Western Power, reach out to our sales team - they'll make sure you get the right equipment for your project at a competitive price.



Sales Team on 13 10 87 (weekdays 8:00am - 4:00pm)





363 Wellington Street  
Perth WA 6000  
GPO Box L921 Perth WA 6842

General enquiries 13 10 87  
TTY (for those who are speech or hearing impaired) 1800 13 13 51  
TIS (interpreter services) 13 14 50

Electricity Networks Corporation trading as Western Power  
ABN 18 540 492 861