

The 100MW Challenge Pilot Demo on Flexibility Services Portal

22 July 2020

Privileged & Confidential



Today's session

1. Overview
2. The Flexibility Portal
3. Next steps
4. Questions and answers

Kathryn 10 mins

Hui 30 mins

Hui/Mike 5 mins

All 15 mins



The Flexibility Services portal

We developed this platform to:

- ✓ Facilitate flex with partners and participants
- ✓ Enable participants to fast-track their own business models
- ✓ Provide partners and participants with visibility of their energy usage profile, so they can see the impact of their flexibility services

Your input is key - we would like to work with you to:

- ✓ Demonstrate the portal, today
- ✓ Begin user acceptance testing
- ✓ Undertake portal training

The Flexibility Services portal

Partner & Participant



START

1. Offer flexibility
3. Notify to provide flexibility
4. Meter data to measure flexibility

Flexibility Management

1. Portfolio
2. Notification
3. Data: M&V
4. UI & UX

2. Create flexibility event
5. Verification of flexibility event
6. Payment

END

Western Power

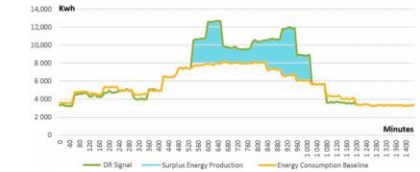
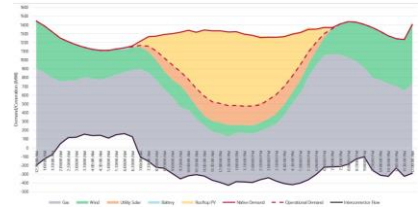
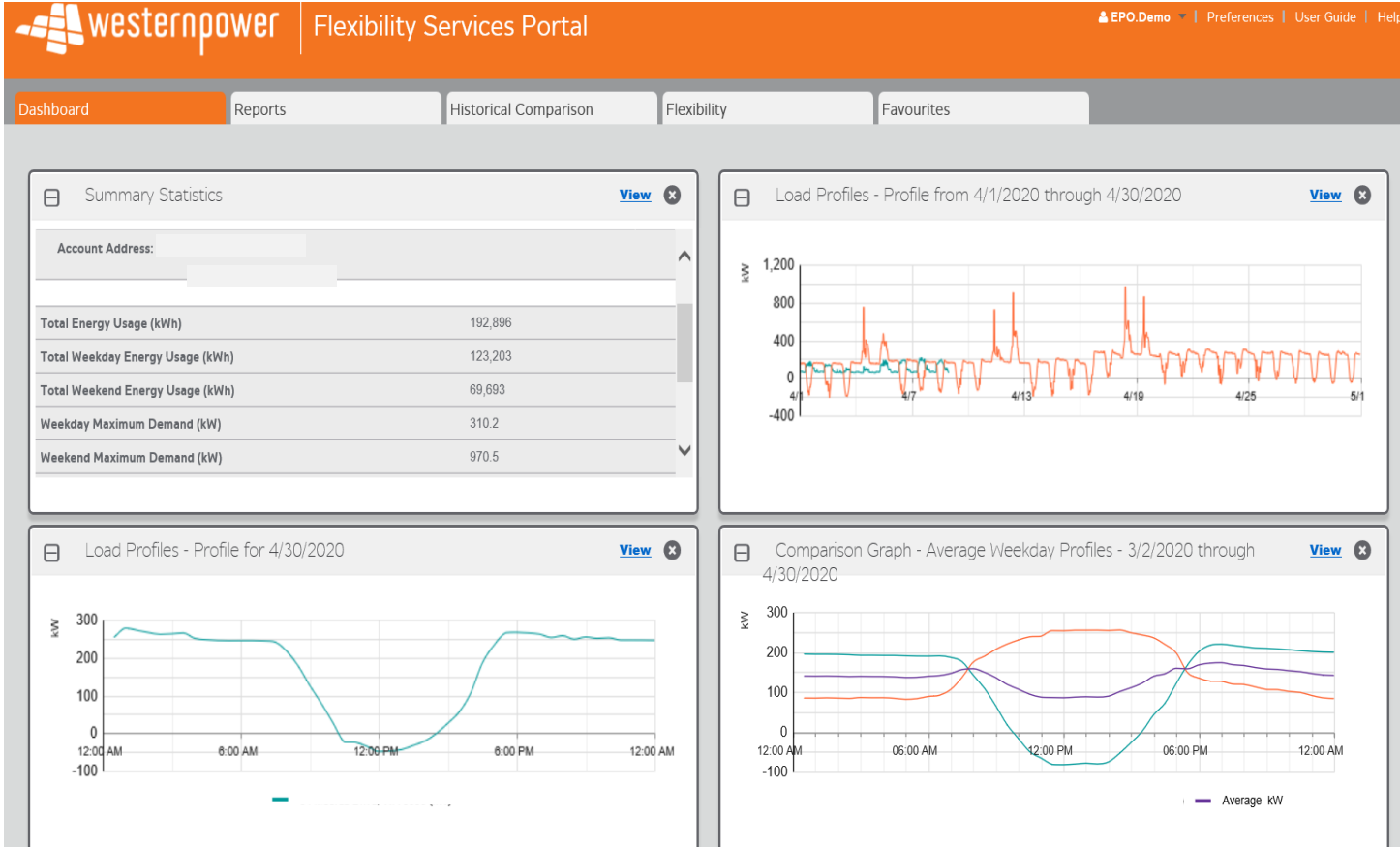


Figure 8. Smart grid energy unbalanced state before blockchain based optimization and planned DR signal.

Flexibility Services user portal



- Customise dashboards with intuitive tables and graphs
- Enables insightful reporting on energy usage
- View historical data and statistics to track and compare past energy use
- Compare energy use across multiple sites

Flexibility Services user portal

Track Flexibility events and review event performance

Curtailment Event Details

Program Name: Distribution Level Demand Response Programs

Account ID: 6662288249

Account Name

Event Date: 4/5/2020

Status: Completed

Event Time End: 2:00 PM

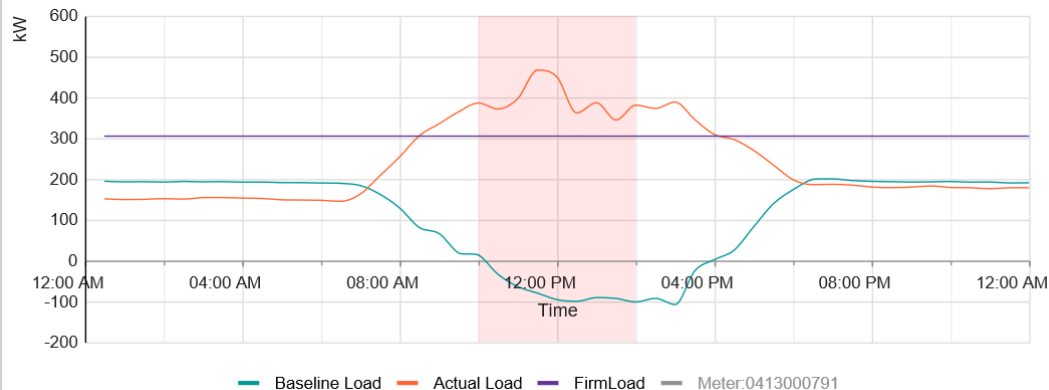
Firm Load: 305 kW

Energy Price: 50.000 C/kWh

Baseline Algorithm: Low 4 of 5 Weekend & Holiday Days

Event Time Start: 10:00 AM

Curtailment report - Sunday, April 5, 2020



[View Table](#)

Days in Baseline [Details...](#)

3/21/2020-3/22/2020
3/28/2020-3/29/2020

What's next



Your **input and feedback** is essential, for:

- User acceptance testing
- Portal training
- Using the portal during the trial
- Please direct all communications to flexibilityservices@westernpower.com.ai

Your questions &
feedback...



Baselines and M&V

Baselines – used by us to measure and verify your premises

We create the baseline – with your premise's recent, historical energy load data

You can review – the data used for M&V in the platform



Typical energy load profile for your premises on low load days, compared to the scheduled dates for the Challenge.



The typical energy load profile of your premises on alternative high load days.



The clarity and consistency of the energy load data feed from your premises.

