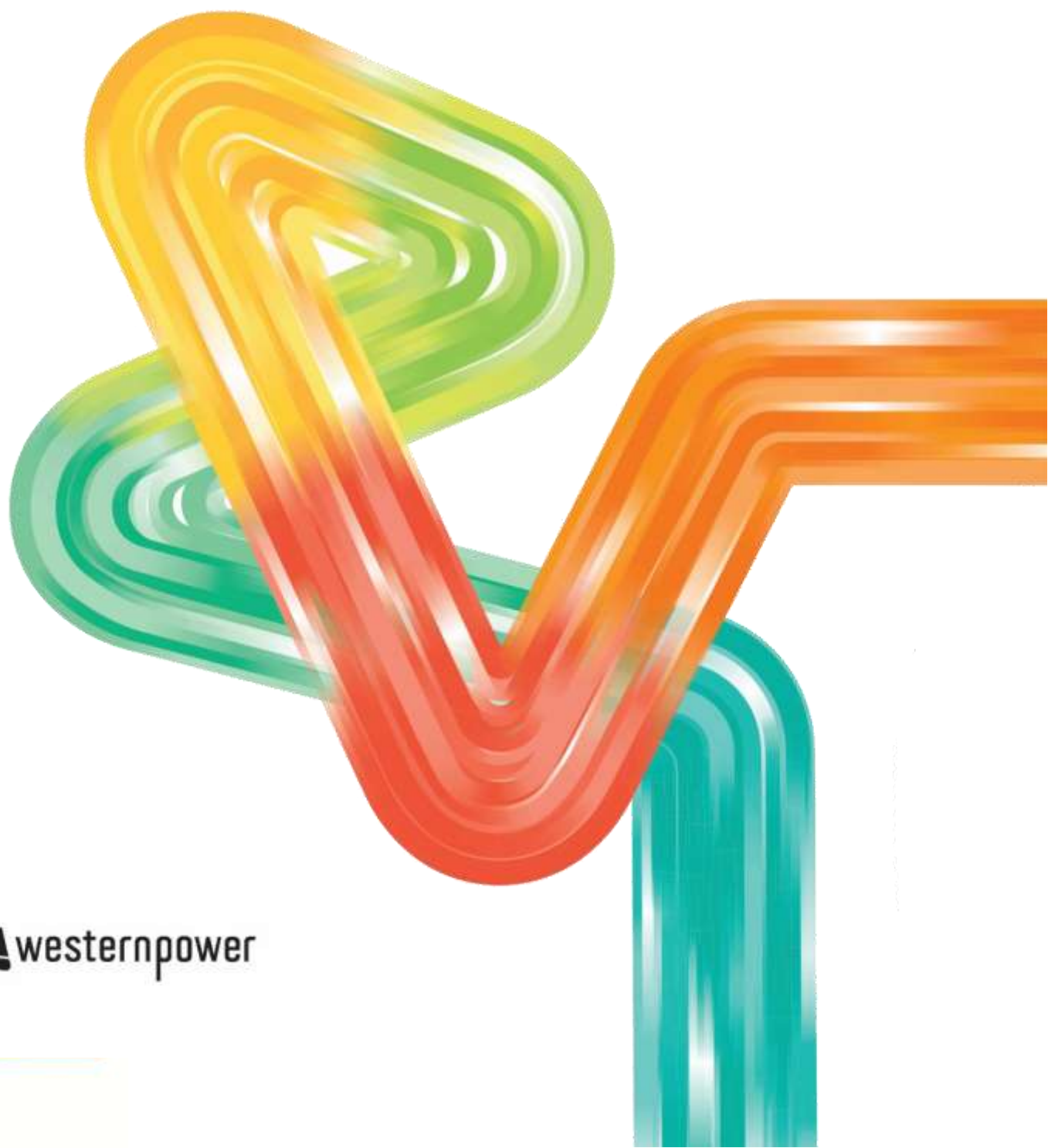


Electricity Industry (Network Quality and Reliability of Supply) Code 2005

Annual Reliability and Power Quality Report for the year ended 30 June 2019

27 September 2019



Contents

1. Purpose	1
1.1 Context	1
1.2 Definitions	1
2. Report structure	2
3. Network Topology	3
4. Overview	4
4.1 Influence of environmental factors	4
4.2 Strategies employed to improve reliability of the Network	4
4.2.1 Routine and targeted maintenance	4
4.2.2 Grid augmentation	4
5. Non-compliances	5
5.1 Reliability	5
5.1.1 Section 9 of the Code	5
5.1.2 Section 12(3) of the Code	5
5.1.3 Section 13(2) of the Code	5
5.1.4 Section 19 of the Code	6
6. Supply interruptions	7
6.1 Performance - Interruptions exceeding 12 hours	7
6.2 Performance – Interruptions exceeding the permitted number of times	7
7. Customer complaints	8
7.1 Performance – Customer complaints	8
8. Payments to customers	9
8.1 Performance – planned interruptions	9
9. Supply reliability	10
9.1 Performance – Perth CBD	11
9.2 Performance – Urban areas other than Perth CBD	11
9.3 Performance – Other areas	12
Appendix A List of customer interruptions exceeding 12 hours	A-1

1. Purpose

The purpose of the Annual Reliability and Power Quality Report (**Report**) is to present the performance of the Western Power Network (**Network**) in accordance with Schedule 1 of the *Electricity Industry (Network Quality and Reliability of Supply) Code 2005 (Code)*, for the reporting period 1 July 2018 to 30 June 2019 (**2018/19 period**).

1.1 Context

The Code, established by the Minister for Energy under the *Electricity Industry Act 2004*, sets out supply reliability and quality standards for electricity network operators in relation to voltage fluctuations, harmonics, unplanned or planned interruptions and complaints. Section 27 of the Code states that a transmitter and distributor of electricity must publish an annual report setting out the information described in Schedule 1 of the Code (**Schedule 1**).

1.2 Definitions

The terminology used in this Report is in accordance with the definitions presented in items 1 and 2 of Schedule 1 of the Code. Item 2 of Schedule 1 requires the reliability performance measures to include all planned and all unplanned interruptions, with no exclusions, greater than one minute in duration irrespective of location, cause or circumstance, as seen by the customer.

For the purpose of this Report, the discrete area “*all other areas of the State*” as stated in item 2(c) of Schedule 1, will be referred to as “Other areas” and will be specific to the Network.

For clarity, the terminology used in this Report and item 11 of Schedule 1 of the Code have the same meaning, as set out below:

- Customer Average Interruption Duration Index (**CAIDI**) refers to item 11(a) of Schedule 1, i.e. “*the average length of interruption of supply to customer premises expressed in minutes*”
- System Average Interruption Frequency Index (**SAIFI**) refers to item 11(b) of Schedule 1, i.e. “*the average number of interruptions of supply to customer premises*”
- Average Service Availability Index (**ASAI**) refers to item 11(c) of Schedule 1, i.e. “*the average percentage of time that electricity has been supplied to customer premises*”
- System Average Interruption Duration Index (**SAIDI**) refers to item 11(d) of Schedule 1, i.e. “*the average total length of all interruptions of supply to customer premises expressed in minutes*”.

2. Report structure

For contextual purposes, this Report is structured as follows:

- Section 3 provides geographic details of the Network.
- Section 4 provides an overview of the influencing factors that have impacted the reliability performance of the Network. This section also provides an overview of the strategies and activities being implemented to improve the reliability of the Network.
- Section 5 (addresses item 4 of Schedule 1) reports on non-compliances with the provisions of the Code, including remedial action taken.
- Section 6 (addresses item 5 of Schedule 1) reports on the number of customers that experienced power interruptions exceeding 12 hours at least once during the 2018/19 period, or more than the permitted number of times.
- Section 7 (addresses items 6, 7 and 8 of Schedule 1) summarises the complaints which have been received, logged and subsequently actioned.
- Section 8 (addresses item 9 of Schedule 1) reports the payments made for failure to give the required notice for planned interruptions and for supply interruptions that exceeded 12 hours (as required under sections 18 and 19 of the Code, respectively).
- Section 9 (addresses items 11, 12 and 13 of Schedule 1) provides discrete area performance data which is inclusive of interruptions on the Network greater than or equal to one minute that resulted in loss of power to customers.

Appendix A provides a list of interruptions that exceeded 12 hours, the length of the interruption and the number of customers affected.

3. Network Topology

The Network covers a geographic area from Kalbarri to Albany, and from Perth to Kalgoorlie (Figure 1) of 255,064 square kilometres. It has a diverse asset base which includes more than 823,000 transmission and distribution poles and over 103,000 circuit kilometres of power lines.

The distribution Network, consisting of over 820 feeders, is connected to the transmission Network at 152 terminal and zone substations and provides an electricity supply to over 1,150,000 customers and over 270,000 streetlights.



Figure 1 - Map of the Western Power Network

4. Overview

This section provides an overview of:

- environmental factors during the 2018/19 period that impacted the actual reliability performance of the Network
- strategies and activities being implemented by Western Power to improve the reliability of the Network.

4.1 Influence of environmental factors

For the 2018/19 period, the reliability performance of the Network improved for Urban and Other areas, while reliability for Perth CBD was lower compared to the 2017/18 period. The lower reliability performance in the Perth CBD was primarily due to underground cable and switchgear failure. Reliability improved in both the Urban and Other areas mainly as a result of less severe storm activity.

4.2 Strategies employed to improve reliability of the Network

Key strategies and activities continued to be implemented to maintain or deliver targeted improvements in the reliability of supply.

4.2.1 Routine and targeted maintenance

This activity involves Western Power's routine and targeted asset inspection, maintenance programs and monitoring of assets. This is done in conjunction with vegetation management plans, as well as the replacement of deteriorating assets and defective assets such as poles and conductors. The objective of routine and targeted maintenance is to positively influence reliability performance and reduce public safety risk.

Improvement in reliability performance can be influenced by reductions in the number and duration of faults caused by equipment failure or instances where wildlife and vegetation interact with the Network. Targeted maintenance programs such as identifying assets in specific areas for replacement or activities such as re-routing feeders have also resulted in a reduction of reliability risk.

4.2.2 Grid augmentation

This activity involves additional capital work such as network modification or installation of new assets. Specific areas may be targeted based on their long-term reliability performance and underlying reliability risk factors. The nature of augmentation will depend on the systemic factors that negatively affect reliability and the suitability of options at that location on the Network. Possible options under this strategy include:

- installing interconnections between parts of the Network to facilitate the transfer of customer connections to different points on the Network (reducing supply interruption duration)
- replacing overhead power lines with covered conductor or underground cables (to reduce the risk of a live electrical conductor contacting a foreign body and causing a supply interruption)
- augmenting or upgrading the distribution feeders, to ensure that there is sufficient load carrying capacity, and that the assets are in an adequate (serviceable) condition to meet customer needs
- investigating and utilizing new technology that is expected to improve the customer experience, such as microgrids, automation, standalone power systems and battery energy storage systems.

5. Non-compliances

This section is provided in response to the requirements of item 4 of Schedule 1 of the Code.

Code extract: Item 4:

“In respect of each failure by the transmitter or distributor to comply with a provision of this Code or an instrument under Section 14(3) (as identified by monitoring records or under section 24 or following a complaint) –

- a) *the total number of breaches of each provision; and*
- b) *the remedial action taken in each case”.*

5.1 Reliability

During the 2018/19 period there were four non-compliances relating to reliability.

5.1.1 Section 9 of the Code

Section 9 of the Code requires Western Power, so far as is reasonably practicable, to ensure that the supply of electricity to a customer is maintained and the occurrence and duration of interruptions is kept to a minimum. It is not a breach of Section 9 of the Code if a customer’s electricity supply is interrupted and a notice of that interruption is provided (Section 11(1A) (1)(b) of the Code).

The required notice of 72 hours (or at the earliest practicable time) before the start of the interruption was not provided to a number of customers.

As detailed in Table 3, Western Power made a payment to 290 customers for failing to give the required notice of a planned interruption.

5.1.2 Section 12(3) of the Code

Section 12(3) of the Code requires Western Power to take prescribed action in the event of a significant interruption to a small use customer. As detailed in sections 6.1 and 6.2 of this report, there were instances where Western Power was non-compliant and customers experienced supply interruptions:

- lasting longer than 12 hours
- occurring more frequently than the permitted number of times.

The main reasons for the non-compliances were planned works and weather events beyond Western Power’s control (refer to section 4.1). Western Power was unable to remedy the causes of the interruptions so that prescribed standards were able to be met, nor did it enter into alternative arrangements to the small use customer’s satisfaction.

The Code does not permit the exclusion of weather-related events in the calculation of permissible interruptions, and such conditions contributed to Western Power being non-compliant during the 2018/19 period. The Service Standard Benchmarks in Western Power’s Access Arrangement permit the calculation of significant interruptions to be normalised to exclude weather related events.

5.1.3 Section 13(2) of the Code

Section 13(2) of the Code requires Western Power to perform to the prescribed standard for the average total length of interruptions. Western Power’s performance has been determined in accordance with section 13(3) of the Code, for the four years to 30 June 2019. While the average performance was below the prescribed standard for Urban and Other areas, the prescribed standard was met for Perth CBD.

This is a recurring non-compliance and due to the reasons provided in section 5.1.2 above, Western Power is unable to fully comply with the standards prescribed in the Code. Further, the reliability standards prescribed by the Code exceed the Service Standard Benchmarks set under the Access Arrangement. Therefore, Western Power has two sets of performance standards to comply with. Western Power believes that the Code requires revision to permit alignment with the average total length of interruptions standards in the Access Arrangement as approved by the ERA.

5.1.4 Section 19 of the Code

Section 19 requires Western Power to make a payment to a customer (having applied for payment in accordance with section 19(1)(b)) within a specific timeframe if a supply interruption exceeds 12 hours. Of the 12,008 payments made, Western Power paid three customers outside of the prescribed timeframe. Two of the late payments resulted from manual handling, where customers did not have internet access and claims were lodged on their behalf by Western Power staff. The third late payment was due to an account processing system error. Both causes have been addressed to prevent future occurrences.

6. Supply interruptions

This section sets out Western Power’s response to item 5 of Schedule 1 of the Code.

Code extract: Item 5:

“The number of premises of small use customers the supply of electricity to which has been interrupted –

- a) for more than 12 hours continuously; or*
- b) more than the permitted number of times, as that expression is defined in section 12(1)”,*

and in the case of interruptions referred to in paragraph (a), the number of interruptions and the length of each interruption.

6.1 Performance - Interruptions exceeding 12 hours

Item 5(a):

There were 1,774 incidents resulting in 37,599 customers experiencing one or more interruptions that exceeded 12 hours continuously. Refer to Appendix A for a complete list of customer interruptions exceeding 12 hours.

The primary cause of customer interruptions exceeding 12 hours was storm damage to overhead network assets in January and April 2019, which impacted on customers throughout the network, excluding the Goldfields. The storm damage was less severe than in the previous year, with fewer customers experiencing supply interruptions longer than 12 hours or greater than the permitted number of times – see section 4.1).

6.2 Performance – Interruptions exceeding the permitted number of times

Item 5(b):

Table 1 details the number of customers interrupted more than the number of times expressed in section 12(1) of the Code.

	2017/18	2018/19
Urban areas (including Perth CBD) customers that have been interrupted more than 9 times	1,478	1,266
Other area customers that have been interrupted more than 16 times	3,172	2,569

Table 1: Customers that have been interrupted more than the number of times expressed in section 12(1) of the Code

Customers in Urban areas who experienced more than nine interruptions were predominantly within the Perth metropolitan region.

Customers in Other areas who experienced more than 16 interruptions were predominantly located in the Mid-West, Wheatbelt and Great Southern regions.

7. Customer complaints

This section sets out Western Power’s response to items 6, 7 and 8 of Schedule 1.

Code extract:

Item 6: *“The total number of complaints received”*

Item 7: *“The number of complaints received from customers in each of the discrete areas”*

Item 8: *“The total amount spent by the transmitter or distributor in addressing complaints, other than by way of payment under sections 18 and 19”.*

7.1 Performance – Customer complaints

A total of 955 complaints were received in relation to the following requirements of the Code:

- Section 6(2) Voltage fluctuations
- Section 7 Harmonics
- Sections (9 – 13) Reliability of supply.

Table 2 provides a breakdown of the customer complaints for the past two reporting periods, shown by each of the discrete areas.

	2017/18	2018/19
Perth CBD	2	4
Urban areas other than Perth CBD	640	613
Other areas	278	338
Total	920	955

Table 2: Complaints received in 2017/18 and 2018/19 – total and by discrete area as per items 6 and 7 of Schedule 1

The total amount spent to address complaints was \$498,161 compared to \$601,101 for the 2017/18 period.

8. Payments to customers

This section sets out Western Power's response to item 9 of Schedule 1.

Code extract: Item 9:

"The number and total amount of payments made by the transmitter or distributor under each of sections 18 and 19".

8.1 Performance – planned interruptions

Table 3 below provides details of service standard payments to customers for not providing the required notification of a planned interruption in the 2017/18 and 2018/19 periods. It also provides details of the extended outage payments made for the periods. The reduction in extended outage payments for the 2018/19 period was predominantly due to storm activity not being as severe as the previous period.

	2017/18		2018/19	
	Number	Value	Number	Value
Payments for failure to give the required notice of a planned interruption	376	\$7,520	290	\$5,800 ¹
Payments for supply interruptions exceeding 12 hours	19,832	\$1,586,560	12,008	\$960,640

Table 3: Payments in 2017/18 and 2018/19 as per item 9 of Schedule 1

¹ In addition to the \$5,800 pursuant to clause 18 of the Code, Western Power made \$8,680 ex gratia payments.

9. Supply reliability

This section sets out Western Power’s response to items 11, 12 and 13 of Schedule 1.

Code extract: Item 11

“For each discrete area –

- a) the average length of interruption of supply to customer premises expressed in minutes [CAIDI];*
- b) the average number of interruptions of supply to customer premises [SAIFI];*
- c) the average percentage of time that electricity has been supplied to customer premises [ASAI]; and*
- d) the average total length of all interruptions of supply to customer premises expressed in minutes [SAIDI]”.*

Code extract: Item 12

“The information published for each paragraph of item 11 in respect of each of the 3 years ending 30 June preceding the year to which the report relates.”

Code extract: Item 13

“For each paragraph of item 11, the average of the 4 amounts under that paragraph in respect of the years comprising –

- a) the year to which the report relates; and*
- b) the 3 years referred to in item 12”.*

Part 2, Division 3, Sections 13(2) and 13(3) set out the prescribed standards for the average total length of interruptions of supply for particular areas.

Code extract:

Subsection 13(2) “A transmitter or distributor must, so far as is reasonably practicable, ensure that for customer premises in an area referred to in the first column of the Table to this subsection the average total length of interruptions of supply, as calculated under subsection (3), does not exceed the number of minutes specified in the second column opposite the reference to that area.

Area	Standard for average total length of interruptions in minutes
the Perth CBD	30
the Urban areas other than the Perth CBD	160
any Other area of the State	290

Subsection 13(3)“ For the purposes of subsection (2), the average total length of interruptions of supply is to be calculated as at 30 June in each year –

- a) by taking the average total length, in minutes, of interruptions of supply to customer premises in an area during each year of the period of 4 years ending on that day; and*
- b) by then taking the average of the 4 annual figures determined under paragraph (a)”*

Tables 4 to 6 show the SAIDI, SAIFI, CAIDI and ASAI performance over the past four years ending 30 June each year, including the four-year average, for the discrete areas of:

- Perth CBD
- Urban areas other than Perth CBD
- Other areas.

9.1 Performance – Perth CBD

The *Perth CBD* average SAIDI performance shown in Table 4 was within the standard of 30 minutes, however, performance for 2018/19 declined for all indicators compared to 2017/18, which was attributed primarily to underground cable and switchgear failures.

KPI	Units	Financial year ended 30 June				4 Year Average
		2015/16	2016/17	2017/18	2018/19	
SAIDI	minutes per year	51	23	11	19	26
SAIFI	interruptions per year	0.19	0.14	0.07	0.12	0.13
CAIDI	minutes per interruption	272	167	154	158	188
ASAI	% availability per year	99.990	99.996	99.998	99.996	99.995

Table 4: Perth CBD area reliability

9.2 Performance – Urban areas other than Perth CBD

The *Urban areas other than Perth CBD* average SAIDI performance shown in Table 5 was outside the standard of 160 minutes, however, performance for 2018/19 improved for all indicators compared to 2017/18 due to less severe storm activity during the reporting period (refer to section 4.1).

KPI	Units	Financial Year Ended 30 June				4 Year Average
		2015/16	2016/17	2017/18	2018/19	
SAIDI	Minutes per year	215	249	296	189	237
SAIFI	Interruptions per year	1.55	1.80	1.77	1.51	1.66
CAIDI	Minutes per interruption	139	138	167	125	142
ASAI	% availability per year	99.959	99.953	99.944	99.964	99.955

Table 5: Urban areas other than Perth CBD reliability

9.3 Performance – Other areas

The *Other areas* average SAIDI performance shown in Table 6 was outside the standard of 290 minutes, however, performance for 2018/19 improved for all indicators compared to 2017/18 due to less severe storm activity during the reporting period (refer to section 4.1).

KPI	Units	Financial Year Ended 30 June				4 Year Average
		2015/16	2016/17	2017/18	2018/19	
SAIDI	Minutes per year	1,125	880	1,055	757	954
SAIFI	Interruptions per year	5.40	4.94	4.81	4.17	4.83
CAIDI	Minutes per interruption	208	178	219	181	197
ASAI	% availability per year	99.786	99.833	99.799	99.856	99.818

Table 6: Other areas reliability

Appendix A

List of customer
interruptions exceeding 12
hours

A.1 Appendix A - List of customer interruptions exceeding 12 hours

As per section 6 of this report, the list below provides details of interruptions exceeding 12 hours, including the length of the interruption and the number of customers affected. Western Power endeavoured to minimise the duration of all interruptions and the list below highlights (*) those interruptions where progressive restoration of customer supplies was possible through switching and reconfiguration of the Network prior to full restoration.

Interruption	First Restoration After 12 Hours	Final Restoration After 12 Hours	Customers interrupted
1	17 hours, 12 minutes	17 hours, 12 minutes	1
2	17 hours, 12 minutes	17 hours, 12 minutes	6
3	17 hours, 12 minutes	17 hours, 38 minutes*	52
4	17 hours, 12 minutes	17 hours, 12 minutes	1
5	19 hours, 35 minutes	19 hours, 35 minutes	1
6	19 hours, 35 minutes	19 hours, 35 minutes	59
7	19 hours, 35 minutes	19 hours, 35 minutes	1
8	15 hours, 52 minutes	15 hours, 52 minutes	1
9	15 hours, 52 minutes	16 hours, 29 minutes*	164
10	15 hours, 52 minutes	16 hours, 13 minutes*	1,668
11	15 hours, 52 minutes	15 hours, 52 minutes	1
12	15 hours, 52 minutes	15 hours, 52 minutes	1
13	15 hours, 52 minutes	15 hours, 52 minutes	6
14	13 hours, 59 minutes	13 hours, 59 minutes	60
15	13 hours, 59 minutes	13 hours, 59 minutes	1
16	13 hours, 59 minutes	13 hours, 59 minutes	1
17	1 day, 1 hour, 18 minutes	1 day, 1 hour, 18 minutes	24
18	1 day, 1 hour, 18 minutes	1 day, 1 hour, 18 minutes	4
19	1 day, 1 hour, 18 minutes	1 day, 1 hour, 18 minutes	1
20	17 hours, 16 minutes	17 hours, 16 minutes	16
21	3 days, 2 hours, 49 minutes	3 days, 2 hours, 49 minutes	1
22	15 hours, 33 minutes	19 hours, 15 minutes*	22
23	15 hours, 33 minutes	15 hours, 33 minutes	1
24	15 hours, 33 minutes	15 hours, 33 minutes	2
25	21 hours, 16 minutes	21 hours, 20 minutes*	2,090
26	13 hours, 45 minutes	13 hours, 45 minutes	9
27	13 hours, 45 minutes	13 hours, 45 minutes	1
28	13 hours, 45 minutes	13 hours, 45 minutes	45
29	16 hours, 27 minutes	16 hours, 27 minutes	1
30	16 hours, 27 minutes	21 hours, 9 minutes*	258
31	16 hours, 27 minutes	16 hours, 27 minutes	1
32	16 hours, 27 minutes	16 hours, 27 minutes	4
33	18 hours, 12 minutes	18 hours, 12 minutes	1
34	18 hours, 12 minutes	18 hours, 12 minutes	5

Interruption	First Restoration After 12 Hours	Final Restoration After 12 Hours	Customers interrupted
35	18 hours, 12 minutes	18 hours, 12 minutes	12
36	18 hours, 12 minutes	18 hours, 12 minutes	30
37	17 hours, 37 minutes	17 hours, 37 minutes	5
38	17 hours, 37 minutes	17 hours, 37 minutes	1
39	17 hours, 37 minutes	17 hours, 37 minutes	4
40	3 days, 50 minutes	3 days, 50 minutes	3
41	21 hours, 8 minutes	21 hours, 8 minutes	64
42	21 hours, 8 minutes	21 hours, 8 minutes	127
43	19 hours, 36 minutes	19 hours, 36 minutes	1
44	19 hours, 36 minutes	19 hours, 36 minutes	4
45	19 hours, 36 minutes	19 hours, 36 minutes	1
46	13 hours, 43 minutes	13 hours, 43 minutes	3
47	13 hours, 43 minutes	13 hours, 43 minutes	1
48	13 hours, 43 minutes	13 hours, 43 minutes	1
49	16 hours, 32 minutes	20 hours, 2 minutes*	11
50	16 hours, 32 minutes	16 hours, 32 minutes	1
51	16 hours, 32 minutes	16 hours, 32 minutes	53
52	1 day, 1 hour, 51 minutes	1 day, 1 hour, 51 minutes	31
53	15 hours, 25 minutes	15 hours, 25 minutes	31
54	15 hours, 25 minutes	15 hours, 25 minutes	352
55	15 hours, 25 minutes	15 hours, 25 minutes	1
56	15 hours, 25 minutes	15 hours, 25 minutes	1
57	15 hours, 25 minutes	15 hours, 25 minutes	1
58	15 hours, 25 minutes	15 hours, 25 minutes	3
59	15 hours, 25 minutes	17 hours, 39 minutes*	1,840
60	14 hours, 20 minutes	16 hours*	14
61	14 hours, 20 minutes	14 hours, 20 minutes	2
62	14 hours, 20 minutes	14 hours, 20 minutes	1
63	14 hours, 20 minutes	17 hours, 37 minutes*	38
64	14 hours, 20 minutes	14 hours, 20 minutes	1
65	14 hours, 20 minutes	14 hours, 20 minutes	1
66	13 hours, 53 minutes	13 hours, 53 minutes	96
67	13 hours, 53 minutes	14 hours, 55 minutes*	64
68	1 day, 1 hour, 45 minutes	1 day, 1 hour, 45 minutes	385
69	14 hours, 3 minutes	15 hours, 58 minutes*	24
70	14 hours, 3 minutes	14 hours, 3 minutes	1
71	14 hours, 3 minutes	14 hours, 3 minutes	1
72	14 hours, 3 minutes	14 hours, 3 minutes	34
73	20 hours, 9 minutes	22 hours, 23 minutes*	7
74	20 hours, 9 minutes	20 hours, 9 minutes	89
75	20 hours, 14 minutes	20 hours, 14 minutes	43
76	20 hours, 14 minutes	20 hours, 14 minutes	1
77	20 hours, 14 minutes	20 hours, 14 minutes	4,679
78	21 hours, 10 minutes	21 hours, 10 minutes	38
79	21 hours, 10 minutes	21 hours, 10 minutes	1

Interruption	First Restoration After 12 Hours	Final Restoration After 12 Hours	Customers interrupted
80	21 hours, 10 minutes	21 hours, 10 minutes	2
81	21 hours, 10 minutes	21 hours, 10 minutes	1
82	21 hours, 10 minutes	21 hours, 10 minutes	1
83	15 hours, 19 minutes	15 hours, 19 minutes	3
84	15 hours, 19 minutes	15 hours, 19 minutes	12
85	15 hours, 19 minutes	15 hours, 19 minutes	4
86	15 hours, 19 minutes	15 hours, 19 minutes	44
87	12 hours, 18 minutes	12 hours, 41 minutes*	286
88	12 hours, 18 minutes	12 hours, 18 minutes	1
89	9 days, 4 hours, 9 minutes	9 days, 4 hours, 9 minutes	1
90	18 hours, 24 minutes	18 hours, 24 minutes	52
91	20 hours	1 day, 40 minutes	30
92	20 hours	20 hours	1
93	21 hours	20 hours	1
94	22 hours	20 hours, 13 minutes*	1,136
95	14 hours, 14 minutes	14 hours, 14 minutes	14
96	14 hours, 14 minutes	14 hours, 14 minutes	1
97	14 hours, 14 minutes	14 hours, 14 minutes	1
98	14 hours, 14 minutes	14 hours, 14 minutes	2
99	12 hours, 58 minutes	12 hours, 58 minutes	1
100	12 hours, 58 minutes	12 hours, 58 minutes	14
101	12 hours, 58 minutes	15 hours, 4 minutes*	309
102	12 hours, 58 minutes	12 hours, 58 minutes	1
103	12 hours, 58 minutes	12 hours, 58 minutes	1
104	12 hours, 58 minutes	12 hours, 58 minutes	1
105	12 hours, 5 minutes	12 hours, 5 minutes	42
106	12 hours, 5 minutes	12 hours, 5 minutes	1
107	12 hours, 5 minutes	12 hours, 5 minutes	28
108	12 hours, 5 minutes	12 hours, 15 minutes*	2,193
109	4 days, 8 hours, 53 minutes	4 days, 8 hours, 53 minutes	1
110	20 hours, 43 minutes	20 hours, 43 minutes	135
111	20 hours, 43 minutes	20 hours, 51 minutes*	40
112	20 hours, 43 minutes	20 hours, 43 minutes	1
113	20 hours, 43 minutes	1 day, 1 hour, 14 minutes*	6
114	21 hours, 38 minutes	1 day, 1 hour, 28 minutes*	41
115	12 hours	12 hours	134
116	12 hours	13 hours	9
117	1 day, 6 hours, 16 minutes	1 day, 6 hours, 16 minutes	25
118	21 hours, 2 minutes	21 hours, 2 minutes	1
119	16 hours, 19 minutes	16 hours, 19 minutes	68
120	16 hours, 19 minutes	16 hours, 19 minutes	10
121	16 hours, 19 minutes	16 hours, 19 minutes	1
122	16 hours, 19 minutes	16 hours, 19 minutes	1
123	12 hours, 19 minutes	12 hours, 19 minutes	20
124	12 hours, 19 minutes	12 hours, 19 minutes	1

Interruption	First Restoration After 12 Hours	Final Restoration After 12 Hours	Customers interrupted
125	12 hours, 19 minutes	12 hours, 19 minutes	1
126	12 hours, 19 minutes	12 hours, 19 minutes	1
127	12 hours, 19 minutes	12 hours, 19 minutes	9
128	12 hours, 19 minutes	12 hours, 19 minutes	6
129	15 hours, 56 minutes	15 hours, 56 minutes	33
130	15 hours, 56 minutes	15 hours, 56 minutes	1
131	15 hours, 56 minutes	15 hours, 56 minutes	14
132	15 hours, 56 minutes	15 hours, 56 minutes	41
133	12 hours, 20 minutes	12 hours, 20 minutes	91
134	12 hours, 20 minutes	12 hours, 20 minutes	1
135	12 hours, 20 minutes	13 hours, 27 minutes*	4,031
136	12 hours, 20 minutes	12 hours, 20 minutes	1
137	12 hours, 20 minutes	12 hours, 20 minutes	36
138	1 day, 5 hours, 13 minutes	1 day, 5 hours, 13 minutes	1
139	17 hours, 20 minutes	17 hours, 20 minutes	1
140	13 hours, 20 minutes	13 hours, 20 minutes	1
141	13 hours, 20 minutes	13 hours, 20 minutes	70
142	13 hours, 20 minutes	13 hours, 20 minutes	1
143	13 hours, 20 minutes	13 hours, 20 minutes	1
144	13 hours, 20 minutes	13 hours, 20 minutes	3
145	13 hours, 20 minutes	13 hours, 20 minutes	1
146	13 hours, 11 minutes	13 hours, 11 minutes	138
147	13 hours, 11 minutes	13 hours, 11 minutes	22
148	13 hours, 11 minutes	13 hours, 11 minutes	55
149	1 day, 1 hour, 32 minutes	1 day, 1 hour, 32 minutes	1
150	1 day, 1 hour, 32 minutes	1 day, 1 hour, 32 minutes	13
151	1 day, 1 hour, 32 minutes	1 day, 1 hour, 32 minutes	2
152	16 hours, 47 minutes	16 hours, 47 minutes	2
153	16 hours, 47 minutes	16 hours, 47 minutes	1
154	16 hours, 47 minutes	16 hours, 47 minutes	15
155	19 hours, 40 minutes	19 hours, 40 minutes	1
156	19 hours, 40 minutes	19 hours, 40 minutes	2
157	13 hours, 55 minutes	13 hours, 55 minutes	1
158	13 hours, 55 minutes	13 hours, 55 minutes	1
159	13 hours, 55 minutes	13 hours, 55 minutes	2
160	13 hours, 55 minutes	15 hours, 15 minutes*	588
161	13 hours, 55 minutes	13 hours, 55 minutes	124
162	13 hours, 32 minutes	13 hours, 32 minutes	7
163	13 hours, 32 minutes	13 hours, 33 minutes*	66
164	13 hours, 32 minutes	13 hours, 32 minutes	10
165	13 hours, 32 minutes	13 hours, 32 minutes	1
166	13 hours, 5 minutes	13 hours, 5 minutes	1
167	13 hours, 5 minutes	13 hours, 5 minutes	8
168	1 day, 47 minutes	1 day, 47 minutes	1
169	1 day, 47 minutes	1 day, 47 minutes	1

Interruption	First Restoration After 12 Hours	Final Restoration After 12 Hours	Customers interrupted
170	1 day, 47 minutes	1 day, 47 minutes	1
171	23 hours, 31 minutes	23 hours, 31 minutes	1
172	23 hours, 31 minutes	23 hours, 31 minutes	1
173	23 hours, 31 minutes	23 hours, 31 minutes	24
174	18 hours, 30 minutes	18 hours, 30 minutes	1
175	18 hours, 30 minutes	18 hours, 30 minutes	1,268
176	18 hours, 30 minutes	18 hours, 30 minutes	1
177	18 hours, 30 minutes	18 hours, 30 minutes	1
178	18 hours, 30 minutes	18 hours, 30 minutes	1
179	15 hours, 5 minutes	15 hours, 5 minutes	25
180	15 hours, 5 minutes	15 hours, 5 minutes	1
181	15 hours, 5 minutes	15 hours, 5 minutes	1
182	15 hours, 5 minutes	15 hours, 5 minutes	1
183	15 hours, 5 minutes	15 hours, 5 minutes	17
184	1 day, 3 hours, 1 minute	1 day, 3 hours, 1 minute	1
185	1 day, 22 hours, 36 minutes	1 day, 22 hours, 36 minutes	47
186	17 hours, 30 minutes	18 hours, 58 minutes*	11
187	1 day, 44 minutes	1 day, 44 minutes	1
188	1 day, 44 minutes	1 day, 44 minutes	1
189	17 hours, 15 minutes	17 hours, 15 minutes	8
190	17 hours, 15 minutes	17 hours, 15 minutes	1
191	17 hours, 15 minutes	17 hours, 15 minutes	1
192	15 hours, 23 minutes	15 hours, 23 minutes	1
193	15 hours, 23 minutes	15 hours, 23 minutes	1
194	15 hours, 23 minutes	15 hours, 23 minutes	34
195	15 hours, 23 minutes	15 hours, 23 minutes	31
196	13 hours, 56 minutes	15 hours, 41 minutes*	8
197	13 hours, 1 minute	13 hours, 1 minute	1
198	13 hours, 10 minutes	13 hours, 21 minutes*	53
199	13 hours, 10 minutes	13 hours, 10 minutes	21
200	13 hours, 10 minutes	16 hours, 3 minutes*	243
201	13 hours, 10 minutes	13 hours, 13 minutes*	3,431
202	13 hours, 10 minutes	13 hours, 10 minutes	11
203	13 hours, 10 minutes	13 hours, 10 minutes	5
204	21 hours, 6 minutes	1 day, 5 hours, 40 minutes*	386
205	21 hours, 6 minutes	21 hours, 6 minutes	1
206	21 hours, 6 minutes	21 hours, 6 minutes	1
207	1 day, 5 hours, 56 minutes	1 day, 6 hours, 12 minutes*	174
208	1 day, 5 hours, 56 minutes	1 day, 5 hours, 56 minutes	1
209	1 day, 5 hours, 56 minutes	1 day, 5 hours, 56 minutes	1
210	12 hours, 56 minutes	12 hours, 56 minutes	1
211	12 hours, 56 minutes	12 hours, 56 minutes	159
212	12 hours, 56 minutes	12 hours, 56 minutes	1
213	12 hours, 56 minutes	12 hours, 56 minutes	1
214	12 hours, 56 minutes	4 days, 6 hours, 20 minutes*	17

Interruption	First Restoration After 12 Hours	Final Restoration After 12 Hours	Customers interrupted
215	12 hours, 56 minutes	12 hours, 56 minutes	30
216	20 hours, 42 minutes	20 hours, 42 minutes	1
217	1 day, 29 minutes	1 day, 29 minutes	1
218	1 day, 29 minutes	1 day, 29 minutes	1
219	18 hours, 56 minutes	18 hours, 56 minutes	205
220	18 hours, 56 minutes	21 hours, 14 minutes*	30
221	18 hours, 56 minutes	18 hours, 56 minutes	62
222	16 hours, 55 minutes	16 hours, 55 minutes	1
223	16 hours, 55 minutes	16 hours, 55 minutes	1
224	16 hours, 55 minutes	16 hours, 59 minutes*	735
225	18 hours, 52 minutes	18 hours, 52 minutes	50
226	18 hours, 52 minutes	23 hours, 52 minutes*	23
227	18 hours, 52 minutes	18 hours, 52 minutes	183
228	17 hours, 39 minutes	17 hours, 39 minutes	1
229	17 hours, 39 minutes	17 hours, 39 minutes	59
230	17 hours, 39 minutes	17 hours, 39 minutes	1
231	14 hours, 13 minutes	14 hours, 13 minutes	6
232	14 hours, 13 minutes	14 hours, 13 minutes	1
233	17 hours, 52 minutes	17 hours, 52 minutes	1,074
234	17 hours, 52 minutes	17 hours, 52 minutes	12
235	17 hours, 52 minutes	17 hours, 52 minutes	1
236	17 hours, 52 minutes	17 hours, 52 minutes	1
237	14 hours, 42 minutes	14 hours, 42 minutes	1
238	14 hours, 42 minutes	14 hours, 42 minutes	678
239	14 hours, 42 minutes	14 hours, 42 minutes	7
240	14 hours, 42 minutes	14 hours, 42 minutes	1
241	12 hours, 3 minutes	12 hours, 3 minutes	89
242	12 hours, 3 minutes	12 hours, 3 minutes	1
243	12 hours, 3 minutes	12 hours, 3 minutes	25
244	12 hours, 3 minutes	12 hours, 3 minutes	16
245	12 hours, 3 minutes	12 hours, 3 minutes	32
246	18 hours, 21 minutes	18 hours, 21 minutes	1
247	18 hours, 21 minutes	18 hours, 21 minutes	23
248	16 hours, 52 minutes	16 hours, 52 minutes	1
249	16 hours, 52 minutes	16 hours, 52 minutes	1,041
250	16 hours, 52 minutes	16 hours, 52 minutes	1
251	20 hours, 4 minutes	20 hours, 4 minutes	1
252	20 hours, 4 minutes	20 hours, 4 minutes	1
253	20 hours, 4 minutes	20 hours, 4 minutes	1
254	13 hours, 12 minutes	13 hours, 12 minutes	1
255	13 hours, 12 minutes	13 hours, 12 minutes	98
256	13 hours, 12 minutes	13 hours, 12 minutes	6
257	13 hours, 12 minutes	13 hours, 12 minutes	539
258	13 hours, 12 minutes	13 hours, 12 minutes	15
259	16 hours, 30 minutes	16 hours, 30 minutes	4

Interruption	First Restoration After 12 Hours	Final Restoration After 12 Hours	Customers interrupted
260	16 hours, 30 minutes	16 hours, 30 minutes	1
261	2 days, 14 hours, 4 minutes	2 days, 14 hours, 4 minutes	1
262	18 hours, 18 minutes	18 hours, 18 minutes	11
263	12 hours, 45 minutes	12 hours, 45 minutes	4
264	12 hours, 45 minutes	12 hours, 45 minutes	1
265	12 hours, 45 minutes	12 hours, 45 minutes	1
266	1 day, 4 hours, 56 minutes	1 day, 4 hours, 56 minutes	2
267	16 hours, 53 minutes	16 hours, 53 minutes	1
268	16 hours, 53 minutes	16 hours, 53 minutes	2
269	15 hours, 37 minutes	15 hours, 37 minutes	1
270	15 hours, 37 minutes	15 hours, 37 minutes	11
271	15 hours, 37 minutes	15 hours, 37 minutes	13
272	14 hours, 50 minutes	14 hours, 50 minutes	1
273	14 hours, 50 minutes	15 hours, 30 minutes*	101
274	14 hours, 50 minutes	14 hours, 50 minutes	1
275	12 hours, 41 minutes	12 hours, 41 minutes	32
276	12 hours, 41 minutes	12 hours, 41 minutes	1
277	12 hours, 41 minutes	12 hours, 41 minutes	1
278	16 hours, 7 minutes	16 hours, 7 minutes	1
279	16 hours, 7 minutes	16 hours, 7 minutes	1
280	17 hours, 14 minutes	17 hours, 14 minutes	8
281	17 hours, 14 minutes	17 hours, 14 minutes	146
282	17 hours, 14 minutes	17 hours, 14 minutes	1
283	14 hours, 43 minutes	14 hours, 43 minutes	1
284	14 hours, 43 minutes	14 hours, 43 minutes	1
285	13 hours, 13 minutes	13 hours, 13 minutes	56
286	13 hours, 13 minutes	13 hours, 13 minutes	1
287	13 hours, 13 minutes	13 hours, 13 minutes	5
288	13 hours, 13 minutes	13 hours, 13 minutes	36
289	13 hours, 13 minutes	13 hours, 13 minutes	1
290	1 day, 6 hours, 49 minutes	1 day, 6 hours, 49 minutes	24
291	23 hours, 34 minutes	23 hours, 34 minutes	1
292	23 hours, 34 minutes	23 hours, 34 minutes	2
293	1 day, 3 hours, 19 minutes	1 day, 3 hours, 19 minutes	2
294	1 day, 3 hours, 19 minutes	1 day, 3 hours, 19 minutes	1
295	20 hours, 12 minutes	20 hours, 12 minutes	1
296	18 hours, 51 minutes	18 hours, 51 minutes	45
297	18 hours, 51 minutes	18 hours, 51 minutes	1
298	23 hours	23 hours	8
299	20 hours, 10 minutes	20 hours, 10 minutes	1
300	20 hours, 10 minutes	20 hours, 10 minutes	15
301	20 hours, 10 minutes	20 hours, 10 minutes	5
302	22 hours, 51 minutes	22 hours, 51 minutes	9
303	22 hours, 51 minutes	22 hours, 51 minutes	1
304	20 hours, 33 minutes	20 hours, 33 minutes	34

Interruption	First Restoration After 12 Hours	Final Restoration After 12 Hours	Customers interrupted
305	20 hours, 33 minutes	20 hours, 33 minutes	52
306	20 hours, 33 minutes	20 hours, 33 minutes	3
307	15 hours, 59 minutes	15 hours, 59 minutes	1
308	15 hours, 59 minutes	19 hours, 49 minutes*	558
309	15 hours, 59 minutes	15 hours, 59 minutes	84
310	19 hours, 8 minutes	19 hours, 8 minutes	1
311	19 hours, 8 minutes	19 hours, 8 minutes	7
312	19 hours, 8 minutes	19 hours, 8 minutes	1
313	19 hours, 8 minutes	19 hours, 8 minutes	1
314	12 hours, 12 minutes	12 hours, 12 minutes	39
315	12 hours, 12 minutes	12 hours, 12 minutes	1
316	12 hours, 47 minutes	12 hours, 47 minutes	1
317	12 hours, 47 minutes	12 hours, 47 minutes	1
318	12 hours, 47 minutes	12 hours, 47 minutes	62
319	18 hours, 26 minutes	18 hours, 26 minutes	7
320	18 hours, 26 minutes	18 hours, 26 minutes	32
321	19 hours, 29 minutes	19 hours, 29 minutes	8
322	19 hours, 29 minutes	19 hours, 29 minutes	5
323	19 hours, 29 minutes	19 hours, 29 minutes	528
324	1 day, 1 hour, 7 minutes	1 day, 1 hour, 7 minutes	30
325	1 day, 1 hour, 7 minutes	1 day, 1 hour, 7 minutes	1
326	1 day, 1 hour, 7 minutes	2 days, 38 minutes*	17
327	12 hours, 55 minutes	1 day, 13 hours, 38 minutes*	32
328	21 hours, 25 minutes	21 hours, 25 minutes	1
329	21 hours, 25 minutes	21 hours, 25 minutes	1
330	18 hours, 41 minutes	18 hours, 41 minutes	1
331	18 hours, 41 minutes	18 hours, 41 minutes	65
332	18 hours, 41 minutes	18 hours, 41 minutes	1
333	18 hours, 41 minutes	18 hours, 41 minutes	1
334	19 hours, 52 minutes	19 hours, 52 minutes	9
335	19 hours, 52 minutes	19 hours, 52 minutes	2
336	19 hours, 52 minutes	19 hours, 52 minutes	30
337	13 hours, 8 minutes	13 hours, 8 minutes	41
338	13 hours, 8 minutes	13 hours, 8 minutes	19
339	13 hours, 8 minutes	1 day, 5 hours, 14 minutes*	11
340	13 hours, 8 minutes	13 hours, 8 minutes	15
341	13 hours, 8 minutes	13 hours, 8 minutes	44
342	1 day, 19 hours, 29 minutes	1 day, 19 hours, 29 minutes	1
343	15 hours, 26 minutes	15 hours, 33 minutes*	4,491
344	15 hours, 26 minutes	15 hours, 26 minutes	49
345	15 hours, 26 minutes	15 hours, 26 minutes	5
346	15 hours, 26 minutes	15 hours, 26 minutes	1
347	15 hours, 26 minutes	15 hours, 26 minutes	1
348	15 hours, 26 minutes	15 hours, 26 minutes	1
349	22 hours, 7 minutes	23 hours, 2 minutes*	51

Interruption	First Restoration After 12 Hours	Final Restoration After 12 Hours	Customers interrupted
350	22 hours, 7 minutes	22 hours, 7 minutes	4
351	13 hours, 44 minutes	13 hours, 44 minutes	1
352	13 hours, 44 minutes	13 hours, 44 minutes	13
353	1 day, 3 hours, 59 minutes	1 day, 3 hours, 59 minutes	9
354	1 day, 3 hours, 59 minutes	1 day, 3 hours, 59 minutes	1
355	16 hours, 26 minutes	16 hours, 26 minutes	21
356	16 hours, 26 minutes	16 hours, 26 minutes	17
357	2 days, 23 hours, 51 minutes	2 days, 23 hours, 51 minutes	1
358	15 hours, 55 minutes	15 hours, 55 minutes	175
359	15 hours, 55 minutes	15 hours, 55 minutes	2
360	16 hours, 6 minutes	16 hours, 6 minutes	1
361	16 hours, 6 minutes	16 hours, 6 minutes	1
362	1 day, 19 hours, 8 minutes	1 day, 19 hours, 8 minutes	15
363	15 hours, 32 minutes	15 hours, 32 minutes	1
364	15 hours, 32 minutes	15 hours, 32 minutes	1
365	12 hours, 39 minutes	12 hours, 39 minutes	1
366	12 hours, 39 minutes	12 hours, 39 minutes	152
367	1 day, 6 hours, 22 minutes	1 day, 6 hours, 22 minutes	2
368	1 day, 2 hours, 52 minutes	1 day, 2 hours, 52 minutes	29
369	20 hours, 37 minutes	20 hours, 37 minutes	23
370	20 hours, 37 minutes	20 hours, 37 minutes	1
371	20 hours, 37 minutes	20 hours, 37 minutes	1
372	1 day, 2 hours, 1 minute	1 day, 2 hours, 1 minute	1
373	1 day, 2 hours, 1 minute	1 day, 2 hours, 1 minute	1
374	14 hours, 49 minutes	14 hours, 49 minutes	2
375	14 hours, 49 minutes	14 hours, 49 minutes	2
376	14 hours, 49 minutes	14 hours, 49 minutes	1
377	19 hours, 53 minutes	19 hours, 53 minutes	60
378	19 hours, 53 minutes	19 hours, 53 minutes	1
379	14 hours, 10 minutes	14 hours, 10 minutes	1
380	14 hours, 10 minutes	14 hours, 15 minutes*	2,643
381	14 hours, 10 minutes	14 hours, 10 minutes	1
382	14 hours, 10 minutes	14 hours, 23 minutes*	64
383	12 hours, 52 minutes	12 hours, 52 minutes	1
384	12 hours, 52 minutes	13 hours, 4 minutes*	14
385	12 hours, 38 minutes	12 hours, 38 minutes	1
386	12 hours, 38 minutes	12 hours, 38 minutes	1
387	16 hours, 31 minutes	16 hours, 31 minutes	3,401
388	16 hours, 31 minutes	17 hours, 8 minutes*	1,172
389	14 hours, 19 minutes	14 hours, 19 minutes	10
390	14 hours, 19 minutes	14 hours, 19 minutes	13
391	14 hours, 19 minutes	14 hours, 19 minutes	1
392	14 hours, 19 minutes	15 hours, 18 minutes*	144
393	19 hours, 50 minutes	19 hours, 50 minutes	1
394	19 hours, 50 minutes	19 hours, 50 minutes	1

Interruption	First Restoration After 12 Hours	Final Restoration After 12 Hours	Customers interrupted
395	19 hours, 50 minutes	19 hours, 50 minutes	1
396	19 hours, 50 minutes	19 hours, 50 minutes	1
397	13 hours, 38 minutes	13 hours, 38 minutes	1
398	14 hours, 17 minutes	14 hours, 17 minutes	640
399	14 hours, 17 minutes	14 hours, 17 minutes	1
400	14 hours, 17 minutes	14 hours, 17 minutes	1
401	13 hours, 49 minutes	13 hours, 49 minutes	1
402	13 hours, 49 minutes	13 hours, 49 minutes	1
403	13 hours, 49 minutes	13 hours, 49 minutes	1
404	15 hours, 29 minutes	15 hours, 29 minutes	130
405	15 hours, 29 minutes	15 hours, 29 minutes	15
406	17 hours, 6 minutes	17 hours, 6 minutes	1
407	17 hours, 6 minutes	17 hours, 6 minutes	3
408	17 hours, 6 minutes	17 hours, 6 minutes	16
409	14 hours, 59 minutes	14 hours, 59 minutes	7
410	14 hours, 59 minutes	14 hours, 59 minutes	1
411	14 hours, 59 minutes	14 hours, 59 minutes	1
412	14 hours, 59 minutes	14 hours, 59 minutes	1,315
413	16 hours, 11 minutes	16 hours, 11 minutes	1
414	16 hours, 11 minutes	16 hours, 11 minutes	1
415	16 hours, 11 minutes	16 hours, 11 minutes	21
416	16 hours, 11 minutes	16 hours, 11 minutes	30
417	17 hours, 9 minutes	17 hours, 9 minutes	1
418	17 hours, 9 minutes	17 hours, 9 minutes	1
419	17 hours, 9 minutes	17 hours, 9 minutes	1
420	17 hours, 9 minutes	17 hours, 9 minutes	1
421	19 hours, 2 minutes	19 hours, 2 minutes	1
422	19 hours, 2 minutes	19 hours, 2 minutes	1
423	2 days, 1 hour, 42 minutes	2 days, 1 hour, 42 minutes	1
424	2 days, 1 hour, 42 minutes	2 days, 1 hour, 42 minutes	1
425	1 day, 23 hours, 33 minutes	1 day, 23 hours, 33 minutes	1
426	1 day, 23 hours, 33 minutes	1 day, 23 hours, 33 minutes	6
427	14 hours, 51 minutes	14 hours, 51 minutes	1
428	13 hours, 28 minutes	13 hours, 28 minutes	1
429	13 hours, 28 minutes	13 hours, 28 minutes	1
430	13 hours, 28 minutes	13 hours, 28 minutes	62
431	13 hours, 28 minutes	13 hours, 28 minutes	43
432	15 hours, 7 minutes	15 hours, 7 minutes	29
433	15 hours, 7 minutes	15 hours, 7 minutes	1
434	15 hours, 7 minutes	15 hours, 7 minutes	29
435	15 hours, 7 minutes	17 hours, 2 minutes	18
436	15 hours, 7 minutes	15 hours, 7 minutes	1
437	13 hours, 3 minutes	13 hours, 3 minutes	1
438	13 hours, 3 minutes	13 hours, 3 minutes	1
439	13 hours, 3 minutes	13 hours, 3 minutes	38

Interruption	First Restoration After 12 Hours	Final Restoration After 12 Hours	Customers interrupted
440	16 hours, 36 minutes	16 hours, 36 minutes	1,485
441	16 hours, 36 minutes	16 hours, 36 minutes	265
442	16 hours, 36 minutes	16 hours, 36 minutes	109
443	16 hours, 36 minutes	23 hours, 50 minutes*	47
444	1 day, 4 hours, 11 minutes	1 day, 4 hours, 11 minutes	33
445	17 hours, 17 minutes	17 hours, 17 minutes	1
446	17 hours, 17 minutes	17 hours, 17 minutes	1
447	17 hours, 17 minutes	17 hours, 17 minutes	34
448	17 hours, 17 minutes	17 hours, 17 minutes	1
449	14 hours, 48 minutes	14 hours, 48 minutes	1
450	14 hours, 48 minutes	14 hours, 48 minutes	1
451	14 hours, 48 minutes	14 hours, 48 minutes	1
452	23 hours, 53 minutes	23 hours, 53 minutes	1
453	1 day, 12 hours	1 day, 12 hours	1
454	23 hours, 29 minutes	23 hours, 29 minutes	1
455	23 hours, 29 minutes	23 hours, 29 minutes	13
456	23 hours, 29 minutes	23 hours, 29 minutes	1
457	19 hours, 15 minutes	19 hours, 15 minutes	1
458	19 hours, 15 minutes	1 day, 2 hours, 47 minutes*	25
459	1 day, 4 hours, 4 minutes	1 day, 4 hours, 4 minutes	1
460	23 hours, 32 minutes	23 hours, 32 minutes	12
461	23 hours, 32 minutes	23 hours, 32 minutes	6
462	21 hours, 53 minutes	21 hours, 53 minutes	1
463	21 hours, 53 minutes	21 hours, 53 minutes	1
464	21 hours, 53 minutes	21 hours, 53 minutes	1
465	21 hours, 53 minutes	21 hours, 53 minutes	1
466	1 day, 17 minutes	1 day, 17 minutes	1
467	1 day, 17 minutes	1 day, 17 minutes	7
468	2 days, 19 hours, 56 minutes	2 days, 19 hours, 56 minutes	1
469	22 hours, 48 minutes	22 hours, 48 minutes	1
470	22 hours, 48 minutes	22 hours, 48 minutes	7
471	13 hours, 22 minutes	13 hours, 22 minutes	1
472	13 hours, 22 minutes	13 hours, 22 minutes	1
473	13 hours, 22 minutes	13 hours, 22 minutes	1
474	14 hours, 27 minutes	14 hours, 27 minutes	226
475	14 hours, 27 minutes	14 hours, 27 minutes	258
476	1 day, 1 hour, 6 minutes	1 day, 1 hour, 6 minutes	1
477	1 day, 1 hour, 6 minutes	1 day, 1 hour, 26 minutes	50
478	20 hours, 40 minutes	20 hours, 40 minutes	1
479	20 hours, 40 minutes	20 hours, 40 minutes	8
480	20 hours, 40 minutes	20 hours, 40 minutes	1
481	20 hours, 40 minutes	20 hours, 40 minutes	1
482	20 hours, 40 minutes	20 hours, 40 minutes	1
483	14 hours, 33 minutes	14 hours, 33 minutes	1
484	14 hours, 33 minutes	14 hours, 33 minutes	1

Interruption	First Restoration After 12 Hours	Final Restoration After 12 Hours	Customers interrupted
485	14 hours, 7 minutes	14 hours, 7 minutes	1
486	14 hours, 7 minutes	14 hours, 7 minutes	23
487	14 hours, 7 minutes	14 hours, 7 minutes	326
488	14 hours, 7 minutes	21 hours, 56 minutes*	28
489	1 day, 1 hour, 19 minutes	1 day, 1 hour, 19 minutes	1
490	1 day, 1 hour, 19 minutes	1 day, 1 hour, 19 minutes	1
491	1 day, 56 minutes	1 day, 56 minutes	1
492	17 hours	17 hours	1
493	18 hours	18 hours	5
494	19 hours	19 hours	1,162
495	18 hours, 35 minutes	18 hours, 35 minutes	11
496	18 hours, 35 minutes	20 hours, 36 minutes*	15
497	20 hours, 21 minutes	20 hours, 21 minutes	44
498	20 hours, 21 minutes	20 hours, 21 minutes	4
499	20 hours, 21 minutes	20 hours, 21 minutes	10
500	20 hours, 21 minutes	20 hours, 21 minutes	350
501	1 day, 3 hours, 22 minutes	1 day, 3 hours, 22 minutes	1
502	18 hours, 49 minutes	18 hours, 49 minutes	35
503	16 hours, 1 minute	16 hours, 1 minute	35
504	16 hours, 1 minute	16 hours, 1 minute	1
505	16 hours, 1 minute	16 hours, 1 minute	1
506	16 hours, 1 minute	16 hours, 1 minute	1
507	15 hours, 51 minutes	15 hours, 51 minutes	1
508	15 hours, 51 minutes	15 hours, 51 minutes	1
509	22 hours, 49 minutes	22 hours, 49 minutes	1
510	22 hours, 49 minutes	22 hours, 49 minutes	4
511	1 day, 6 hours, 8 minutes	1 day, 6 hours, 8 minutes	4
512	1 day, 13 hours, 19 minutes	1 day, 13 hours, 19 minutes	2
513	19 hours, 41 minutes	19 hours, 41 minutes	30
514	19 hours, 41 minutes	19 hours, 41 minutes	1
515	1 day, 4 hours, 31 minutes	1 day, 4 hours, 31 minutes	1
516	21 hours, 27 minutes	21 hours, 27 minutes	5
517	21 hours, 27 minutes	21 hours, 27 minutes	19
518	21 hours, 27 minutes	21 hours, 27 minutes	1
519	23 hours, 20 minutes	23 hours, 20 minutes	13
520	23 hours, 20 minutes	1 day, 2 hours, 3 minutes*	21
521	16 hours, 9 minutes	20 hours, 22 minutes*	49
522	16 hours, 28 minutes	16 hours, 28 minutes	1
523	16 hours, 28 minutes	18 hours, 59 minutes*	1,030
524	20 hours, 2 minutes	20 hours, 2 minutes	1
525	20 hours, 2 minutes	1 day, 6 hours, 50 minutes*	494
526	23 hours, 13 minutes	23 hours, 13 minutes	20
527	22 hours, 18 minutes	22 hours, 18 minutes	1
528	22 hours, 18 minutes	22 hours, 18 minutes	1
529	22 hours, 18 minutes	22 hours, 18 minutes	3

Interruption	First Restoration After 12 Hours	Final Restoration After 12 Hours	Customers interrupted
530	22 hours, 40 minutes	22 hours, 40 minutes	1
531	1 day, 22 hours, 40 minutes	1 day, 22 hours, 40 minutes	1
532	16 hours, 40 minutes	16 hours, 40 minutes	20
533	1 day, 5 hours, 15 minutes	1 day, 5 hours, 15 minutes	1
534	1 day, 5 hours, 15 minutes	1 day, 5 hours, 15 minutes	1
535	15 hours, 54 minutes	15 hours, 54 minutes	1
536	15 hours, 54 minutes	15 hours, 54 minutes	1
537	15 hours, 54 minutes	15 hours, 54 minutes	1
538	17 hours, 46 minutes	17 hours, 46 minutes	1
539	17 hours, 46 minutes	17 hours, 46 minutes	1
540	17 hours, 46 minutes	17 hours, 46 minutes	1
541	17 hours, 46 minutes	17 hours, 46 minutes	613
542	17 hours, 25 minutes	17 hours, 25 minutes	10
543	20 hours, 15 minutes	20 hours, 15 minutes	1
544	20 hours, 15 minutes	20 hours, 15 minutes	1
545	20 hours, 15 minutes	20 hours, 15 minutes	1
546	1 day, 1 hour, 46 minutes	1 day, 1 hour, 46 minutes	1
547	1 day, 1 hour, 46 minutes	1 day, 1 hour, 46 minutes	46
548	15 hours, 45 minutes	15 hours, 45 minutes	1
549	15 hours, 45 minutes	15 hours, 45 minutes	13
550	18 hours, 19 minutes	18 hours, 19 minutes	1
551	18 hours, 19 minutes	18 hours, 19 minutes	44
552	1 day	1 day	1
553	1 day	1 day	1
554	1 day	1 day	1
555	1 day	1 day	1
556	1 day	1 day	1
557	2 day	1 day, 3 hours, 48 minutes*	1,414
558	3 day	1 day	1
559	4 day	2 day	1
560	5 day	3 day	1
561	6 day	4 day	1
562	7 day	5 day	1
563	8 day	6 day	1
564	9 day	7 day	1
565	10 day	8 day	1
566	20 hours, 44 minutes	20 hours, 44 minutes	1
567	20 hours, 44 minutes	20 hours, 44 minutes	1
568	16 hours, 4 minutes	16 hours, 4 minutes	1
569	16 hours, 4 minutes	16 hours, 4 minutes	11
570	16 hours, 4 minutes	16 hours, 4 minutes	13
571	16 hours, 4 minutes	16 hours, 4 minutes	1
572	13 hours, 54 minutes	13 hours, 54 minutes	8
573	13 hours, 54 minutes	13 hours, 54 minutes	2
574	13 hours, 54 minutes	13 hours, 54 minutes	1

Interruption	First Restoration After 12 Hours	Final Restoration After 12 Hours	Customers interrupted
575	22 hours, 5 minutes	22 hours, 5 minutes	1
576	22 hours, 5 minutes	22 hours, 5 minutes	1
577	22 hours, 5 minutes	22 hours, 5 minutes	392
578	20 hours, 41 minutes	20 hours, 41 minutes	1
579	18 hours, 13 minutes	18 hours, 13 minutes	65
580	18 hours, 13 minutes	18 hours, 13 minutes	1
581	18 hours, 13 minutes	18 hours, 13 minutes	20
582	18 hours, 13 minutes	18 hours, 18 minutes*	25
583	1 day, 21 minutes	1 day, 21 minutes	149
584	1 day, 21 minutes	1 day, 21 minutes	1
585	1 day, 21 minutes	1 day, 21 minutes	4
586	12 hours, 51 minutes	12 hours, 51 minutes	2
587	12 hours, 51 minutes	12 hours, 51 minutes	1
588	12 hours, 51 minutes	12 hours, 51 minutes	8
589	12 hours, 51 minutes	12 hours, 51 minutes	1
590	16 hours, 51 minutes	16 hours, 51 minutes	1
591	16 hours, 51 minutes	16 hours, 51 minutes	1
592	16 hours, 51 minutes	16 hours, 51 minutes	93
593	19 hours, 9 minutes	19 hours, 9 minutes	1
594	13 hours, 9 minutes	13 hours, 9 minutes	1
595	13 hours, 9 minutes	13 hours, 9 minutes	28
596	13 hours, 9 minutes	16 hours, 6 minutes*	1,199
597	13 hours, 9 minutes	13 hours, 9 minutes	1
598	13 hours, 9 minutes	13 hours, 9 minutes	56
599	13 hours, 9 minutes	13 hours, 9 minutes	15
600	13 hours, 9 minutes	13 hours, 9 minutes	1
601	18 hours, 20 minutes	18 hours, 20 minutes	2
602	18 hours, 20 minutes	18 hours, 20 minutes	1
603	18 hours, 20 minutes	18 hours, 20 minutes	37
604	14 hours, 53 minutes	14 hours, 53 minutes	1
605	14 hours, 53 minutes	14 hours, 53 minutes	1
606	14 hours, 53 minutes	14 hours, 53 minutes	1
607	14 hours, 53 minutes	14 hours, 53 minutes	5
608	14 hours, 53 minutes	14 hours, 53 minutes	4
609	21 hours, 26 minutes	21 hours, 26 minutes	17
610	16 hours, 50 minutes	16 hours, 50 minutes	1
611	16 hours, 33 minutes	16 hours, 33 minutes	749
612	16 hours, 33 minutes	16 hours, 33 minutes	786
613	12 hours, 50 minutes	12 hours, 50 minutes	1
614	12 hours, 50 minutes	12 hours, 50 minutes	1
615	12 hours, 50 minutes	20 hours, 28 minutes*	28
616	12 hours, 50 minutes	15 hours, 24 minutes*	74
617	13 hours, 25 minutes	13 hours, 25 minutes	48
618	1 day, 22 hours, 41 minutes	1 day, 22 hours, 41 minutes	5
619	15 hours, 58 minutes	15 hours, 58 minutes	13

Interruption	First Restoration After 12 Hours	Final Restoration After 12 Hours	Customers interrupted
620	15 hours, 58 minutes	15 hours, 58 minutes	1
621	15 hours, 4 minutes	15 hours, 4 minutes	710
622	15 hours, 4 minutes	15 hours, 4 minutes	1
623	13 hours, 42 minutes	13 hours, 42 minutes	1
624	13 hours, 42 minutes	13 hours, 42 minutes	8
625	13 hours, 42 minutes	13 hours, 42 minutes	12
626	1 day, 4 hours, 25 minutes	1 day, 4 hours, 25 minutes	1
627	14 hours, 32 minutes	14 hours, 32 minutes	1
628	14 hours, 32 minutes	16 hours, 59 minutes*	2,420
629	14 hours, 32 minutes	14 hours, 32 minutes	44
630	14 hours, 32 minutes	14 hours, 32 minutes	1
631	17 hours, 35 minutes	17 hours, 35 minutes	86
632	17 hours, 35 minutes	17 hours, 35 minutes	27
633	17 hours, 35 minutes	20 hours, 4 minutes	11
634	13 hours, 48 minutes	15 hours, 24 minutes*	530
635	13 hours, 48 minutes	13 hours, 48 minutes	1
636	13 hours, 48 minutes	15 hours, 39 minutes*	52
637	17 hours, 1 minute	17 hours, 1 minute	1
638	17 hours, 1 minute	17 hours, 1 minute	4
639	13 hours, 24 minutes	13 hours, 24 minutes	1
640	23 hours, 39 minutes	23 hours, 49 minutes*	36
641	23 hours, 39 minutes	23 hours, 39 minutes	19
642	12 hours, 43 minutes	12 hours, 43 minutes	1
643	12 hours, 43 minutes	12 hours, 43 minutes	1
644	12 hours, 43 minutes	12 hours, 43 minutes	2,886
645	12 hours, 43 minutes	12 hours, 43 minutes	38
646	18 hours, 55 minutes	18 hours, 55 minutes	1
647	18 hours, 55 minutes	19 hours, 4 minutes*	1,261
648	18 hours, 55 minutes	18 hours, 55 minutes	1
649	14 hours, 35 minutes	14 hours, 35 minutes	1
650	14 hours, 35 minutes	14 hours, 35 minutes	15
651	14 hours, 35 minutes	14 hours, 35 minutes	1
652	14 hours, 35 minutes	14 hours, 35 minutes	1
653	14 hours, 35 minutes	14 hours, 35 minutes	1
654	22 hours, 32 minutes	22 hours, 32 minutes	1
655	22 hours, 32 minutes	22 hours, 32 minutes	1
656	16 hours, 20 minutes	16 hours, 20 minutes	1
657	16 hours, 20 minutes	16 hours, 30 minutes	2,115
658	16 hours, 20 minutes	16 hours, 20 minutes	1
659	16 hours, 14 minutes	20 hours, 53 minutes*	18
660	16 hours, 14 minutes	16 hours, 14 minutes	1
661	16 hours, 14 minutes	16 hours, 14 minutes	1
662	16 hours, 14 minutes	16 hours, 14 minutes	32
663	16 hours, 14 minutes	16 hours, 14 minutes	19
664	16 hours, 14 minutes	16 hours, 14 minutes	23

Interruption	First Restoration After 12 Hours	Final Restoration After 12 Hours	Customers interrupted
665	16 hours, 14 minutes	16 hours, 14 minutes	1
666	17 hours, 55 minutes	17 hours, 55 minutes	1
667	17 hours, 55 minutes	20 hours, 38 minutes*	166
668	17 hours, 55 minutes	17 hours, 55 minutes	34
669	17 hours, 55 minutes	1 day, 1 hour, 45 minutes*	12
670	17 hours, 55 minutes	17 hours, 55 minutes	27
671	12 hours, 6 minutes	12 hours, 6 minutes	1
672	1 day, 3 hours, 27 minutes	1 day, 3 hours, 27 minutes	1
673	1 day, 3 hours, 27 minutes	1 day, 3 hours, 27 minutes	1
674	1 day, 54 minutes	1 day, 54 minutes	1
675	12 hours, 16 minutes	12 hours, 16 minutes	60
676	18 hours, 33 minutes	18 hours, 33 minutes	29
677	12 hours, 57 minutes	13 hours, 43 minutes*	13
678	12 hours, 57 minutes	12 hours, 57 minutes	3
679	21 hours, 57 minutes	21 hours, 57 minutes	1
680	21 hours, 57 minutes	21 hours, 57 minutes	2
681	21 hours, 57 minutes	21 hours, 57 minutes	15
682	14 hours, 40 minutes	1 day, 9 hours, 23 minutes*	41
683	14 hours, 40 minutes	14 hours, 40 minutes	1
684	14 hours, 40 minutes	14 hours, 40 minutes	338
685	14 hours, 40 minutes	14 hours, 40 minutes	1
686	14 hours, 40 minutes	14 hours, 40 minutes	2
687	12 hours, 22 minutes	12 hours, 22 minutes	1
688	12 hours, 22 minutes	12 hours, 22 minutes	1
689	12 hours, 22 minutes	12 hours, 22 minutes	1
690	19 hours, 51 minutes	19 hours, 51 minutes	1
691	19 hours, 51 minutes	19 hours, 51 minutes	1
692	19 hours, 51 minutes	19 hours, 51 minutes	13
693	19 hours, 51 minutes	19 hours, 51 minutes	1
694	19 hours, 51 minutes	19 hours, 51 minutes	8
695	19 hours, 51 minutes	19 hours, 51 minutes	56
696	1 day, 8 minutes	1 day, 8 minutes	1
697	1 day, 8 minutes	1 day, 8 minutes	1
698	1 day, 19 hours, 21 minutes	1 day, 19 hours, 21 minutes	3
699	18 hours, 1 minute	18 hours, 1 minute	1
700	18 hours, 1 minute	21 hours, 39 minutes*	4,460
701	18 hours, 1 minute	18 hours, 1 minute	1
702	16 hours, 37 minutes	16 hours, 37 minutes	1
703	16 hours, 37 minutes	18 hours, 39 minutes*	22
704	21 hours, 36 minutes	1 day, 3 minutes*	201
705	21 hours, 36 minutes	21 hours, 36 minutes	5
706	21 hours, 36 minutes	21 hours, 36 minutes	7
707	21 hours, 36 minutes	1 day, 15 hours, 37 minutes*	17
708	14 hours, 22 minutes	14 hours, 22 minutes	1
709	14 hours, 22 minutes	14 hours, 22 minutes	13

Interruption	First Restoration After 12 Hours	Final Restoration After 12 Hours	Customers interrupted
710	14 hours, 22 minutes	14 hours, 22 minutes	14
711	13 hours, 21 minutes	13 hours, 21 minutes	1
712	13 hours, 21 minutes	13 hours, 24 minutes*	539
713	13 hours, 21 minutes	13 hours, 21 minutes	1
714	13 hours, 21 minutes	13 hours, 21 minutes	1
715	13 hours, 21 minutes	13 hours, 21 minutes	1
716	17 hours, 23 minutes	17 hours, 23 minutes	1
717	15 hours, 30 minutes	15 hours, 30 minutes	1
718	15 hours, 30 minutes	15 hours, 30 minutes	2
719	15 hours, 30 minutes	15 hours, 30 minutes	1
720	1 day, 9 hours, 46 minutes	1 day, 9 hours, 46 minutes	1
721	1 day, 3 hours, 50 minutes	1 day, 3 hours, 50 minutes	29
722	21 hours, 46 minutes	21 hours, 46 minutes	1
723	21 hours, 46 minutes	21 hours, 46 minutes	50
724	21 hours, 46 minutes	21 hours, 46 minutes	14
725	2 days, 2 hours, 41 minutes	2 days, 2 hours, 41 minutes	1
726	19 hours, 6 minutes	19 hours, 6 minutes	22
727	19 hours, 6 minutes	19 hours, 6 minutes	1
728	19 hours, 6 minutes	19 hours, 6 minutes	647
729	1 day, 3 hours, 20 minutes	1 day, 3 hours, 20 minutes	1
730	19 hours, 47 minutes	19 hours, 47 minutes	76
731	20 hours, 18 minutes	20 hours, 18 minutes	7
732	20 hours, 18 minutes	20 hours, 18 minutes	11
733	12 hours, 7 minutes	12 hours, 7 minutes	1
734	12 hours, 7 minutes	14 hours, 3 minutes*	98
735	12 hours, 7 minutes	12 hours, 7 minutes	1
736	12 hours, 7 minutes	12 hours, 7 minutes	1
737	12 hours, 7 minutes	19 hours, 54 minutes*	146
738	12 hours, 7 minutes	12 hours, 7 minutes	89
739	12 hours, 7 minutes	12 hours, 11 minutes*	1,038
740	15 hours, 3 minutes	15 hours, 3 minutes	4
741	15 hours, 3 minutes	15 hours, 3 minutes	2
742	15 hours, 3 minutes	15 hours, 3 minutes	6
743	15 hours, 1 minute	15 hours, 1 minute	9
744	15 hours, 1 minute	15 hours, 1 minute	1
745	15 hours, 1 minute	15 hours, 1 minute	1
746	14 hours, 36 minutes	14 hours, 36 minutes	1
747	14 hours, 36 minutes	14 hours, 36 minutes	1
748	17 hours, 51 minutes	17 hours, 51 minutes	1
749	17 hours, 51 minutes	17 hours, 51 minutes	1
750	17 hours, 51 minutes	17 hours, 51 minutes	16
751	19 hours, 4 minutes	19 hours, 4 minutes	1
752	19 hours, 4 minutes	19 hours, 4 minutes	28
753	17 hours, 53 minutes	17 hours, 53 minutes	28
754	13 hours, 17 minutes	13 hours, 17 minutes	1

Interruption	First Restoration After 12 Hours	Final Restoration After 12 Hours	Customers interrupted
755	13 hours, 17 minutes	13 hours, 17 minutes	86
756	15 hours, 47 minutes	15 hours, 47 minutes	1
757	12 hours, 27 minutes	12 hours, 27 minutes	36
758	12 hours, 27 minutes	12 hours, 27 minutes	44
759	19 hours, 26 minutes	19 hours, 26 minutes	1
760	19 hours, 26 minutes	19 hours, 26 minutes	1
761	21 hours, 14 minutes	21 hours, 14 minutes	5
762	18 hours, 4 minutes	18 hours, 58 minutes*	388
763	18 hours, 4 minutes	18 hours, 4 minutes	1
764	20 hours, 17 minutes	20 hours, 17 minutes	1
765	20 hours, 17 minutes	20 hours, 17 minutes	7
766	15 hours, 38 minutes	15 hours, 38 minutes	1
767	15 hours, 38 minutes	15 hours, 38 minutes	19
768	15 hours, 38 minutes	15 hours, 38 minutes	1
769	15 hours, 38 minutes	15 hours, 38 minutes	31
770	23 hours, 22 minutes	23 hours, 22 minutes	1
771	16 hours	16 hours, 8 minutes*	1,405
772	16 hours	16 hours	1
773	1 day, 3 hours, 16 minutes	1 day, 3 hours, 16 minutes	37
774	22 hours, 36 minutes	22 hours, 36 minutes	1
775	22 hours, 36 minutes	22 hours, 36 minutes	151
776	20 hours, 49 minutes	20 hours, 49 minutes	1
777	20 hours, 49 minutes	20 hours, 49 minutes	1
778	20 hours, 49 minutes	20 hours, 49 minutes	1
779	20 hours, 49 minutes	20 hours, 49 minutes	1
780	1 day, 9 hours, 42 minutes	1 day, 9 hours, 42 minutes	1
781	15 hours, 20 minutes	15 hours, 36 minutes*	266
782	15 hours, 20 minutes	15 hours, 20 minutes	96
783	23 hours, 5 minutes	23 hours, 19 minutes*	41
784	23 hours, 5 minutes	23 hours, 5 minutes	1
785	19 hours, 59 minutes	19 hours, 59 minutes	6
786	18 hours, 5 minutes	20 hours, 51 minutes*	19
787	18 hours, 5 minutes	18 hours, 5 minutes	17
788	14 hours, 54 minutes	14 hours, 54 minutes	1
789	14 hours, 54 minutes	14 hours, 54 minutes	70
790	19 hours, 3 minutes	19 hours, 3 minutes	4
791	19 hours, 3 minutes	19 hours, 3 minutes	17
792	19 hours, 3 minutes	19 hours, 3 minutes	149
793	22 hours, 28 minutes	22 hours, 28 minutes	1
794	22 hours, 28 minutes	22 hours, 28 minutes	11
795	16 hours, 24 minutes	16 hours, 27 minutes*	138
796	16 hours, 46 minutes	16 hours, 46 minutes	1
797	12 hours, 24 minutes	12 hours, 24 minutes	1
798	12 hours, 24 minutes	12 hours, 24 minutes	1
799	12 hours, 24 minutes	12 hours, 26 minutes*	190

Interruption	First Restoration After 12 Hours	Final Restoration After 12 Hours	Customers interrupted
800	20 hours, 59 minutes	20 hours, 59 minutes	26
801	16 hours, 13 minutes	16 hours, 15 minutes*	28
802	16 hours, 13 minutes	16 hours, 13 minutes	1
803	16 hours, 13 minutes	16 hours, 13 minutes	1
804	16 hours, 13 minutes	16 hours, 13 minutes	140
805	20 hours, 39 minutes	20 hours, 39 minutes	12
806	20 hours, 39 minutes	20 hours, 39 minutes	17
807	20 hours, 39 minutes	20 hours, 39 minutes	32
808	17 hours, 56 minutes	17 hours, 56 minutes	1
809	17 hours, 56 minutes	17 hours, 56 minutes	1
810	1 day, 14 hours, 42 minutes	1 day, 14 hours, 42 minutes	1
811	1 day, 8 hours, 35 minutes	1 day, 8 hours, 35 minutes	1
812	19 hours, 7 minutes	19 hours, 7 minutes	33
813	19 hours, 7 minutes	19 hours, 7 minutes	13
814	19 hours, 7 minutes	19 hours, 7 minutes	1
815	1 day, 40 minutes	1 day, 40 minutes	15
816	1 day, 40 minutes	1 day, 40 minutes	1
817	15 hours, 43 minutes	15 hours, 43 minutes	1
818	15 hours, 43 minutes	15 hours, 43 minutes	1
819	15 hours, 43 minutes	15 hours, 43 minutes	1
820	15 hours, 43 minutes	15 hours, 43 minutes	1
821	15 hours, 43 minutes	15 hours, 43 minutes	39
822	12 hours, 2 minutes	12 hours, 2 minutes	1
823	1 day, 4 hours, 50 minutes	1 day, 4 hours, 50 minutes	4
824	19 hours, 11 minutes	19 hours, 11 minutes	39
825	1 day, 1 hour, 33 minutes	1 day, 1 hour, 33 minutes	2,277
826	1 day, 1 hour, 33 minutes	1 day, 1 hour, 33 minutes	64
827	1 day, 1 hour, 33 minutes	1 day, 1 hour, 33 minutes	7
828	17 hours, 44 minutes	17 hours, 44 minutes	1
829	17 hours, 44 minutes	17 hours, 44 minutes	2
830	17 hours, 44 minutes	17 hours, 44 minutes	7
831	17 hours, 44 minutes	17 hours, 44 minutes	7
832	12 hours, 8 minutes	12 hours, 8 minutes	1
833	12 hours, 8 minutes	12 hours, 8 minutes	2,697
834	12 hours, 8 minutes	12 hours, 8 minutes	1
835	12 hours, 8 minutes	12 hours, 8 minutes	1
836	12 hours, 8 minutes	12 hours, 8 minutes	1
837	1 day, 1 hour, 55 minutes	1 day, 1 hour, 55 minutes	4
838	1 day, 1 hour, 55 minutes	3 days, 4 minutes*	3
839	1 day, 3 hours, 40 minutes	3 days, 3 hours, 29 minutes*	32
840	1 day, 23 hours, 51 minutes	1 day, 23 hours, 51 minutes	1
841	2 days, 23 minutes	2 days, 23 minutes	7
842	18 hours, 40 minutes	18 hours, 40 minutes	3
843	18 hours, 40 minutes	18 hours, 40 minutes	1
844	13 hours, 27 minutes	13 hours, 27 minutes	1

Interruption	First Restoration After 12 Hours	Final Restoration After 12 Hours	Customers interrupted
845	15 hours, 39 minutes	15 hours, 39 minutes	3
846	15 hours, 39 minutes	16 hours, 33 minutes*	2,358
847	15 hours, 39 minutes	15 hours, 39 minutes	1
848	15 hours, 39 minutes	15 hours, 39 minutes	1
849	15 hours, 12 minutes	15 hours, 12 minutes	2,489
850	15 hours, 22 minutes	15 hours, 22 minutes	1
851	15 hours, 22 minutes	15 hours, 22 minutes	81
852	15 hours, 40 minutes	1 day, 38 minutes*	20
853	15 hours, 40 minutes	15 hours, 40 minutes	7
854	15 hours, 40 minutes	15 hours, 40 minutes	22
855	15 hours, 40 minutes	1 day, 10 hours, 44 minutes*	12
856	15 hours, 40 minutes	15 hours, 40 minutes	4
857	15 hours, 40 minutes	15 hours, 40 minutes	7
858	1 day, 1 hour, 16 minutes	1 day, 1 hour, 16 minutes	14
859	13 hours, 19 minutes	13 hours, 19 minutes	1
860	13 hours, 19 minutes	13 hours, 19 minutes	1,242
861	13 hours, 19 minutes	13 hours, 19 minutes	4
862	14 hours	14 hours	1
863	14 hours	14 hours	1
864	1 day, 1 minute	1 day, 1 minute	1
865	19 hours, 18 minutes	19 hours, 18 minutes	1
866	19 hours, 18 minutes	19 hours, 18 minutes	4
867	19 hours, 18 minutes	19 hours, 18 minutes	6
868	19 hours, 18 minutes	19 hours, 18 minutes	7
869	12 hours, 54 minutes	12 hours, 54 minutes	21
870	12 hours, 54 minutes	12 hours, 54 minutes	1
871	21 hours, 59 minutes	21 hours, 59 minutes	1
872	21 hours, 59 minutes	21 hours, 59 minutes	221
873	23 hours, 58 minutes	23 hours, 58 minutes	1
874	23 hours, 58 minutes	23 hours, 58 minutes	1
875	19 hours, 44 minutes	19 hours, 44 minutes	1
876	19 hours, 44 minutes	19 hours, 44 minutes	1
877	17 hours, 40 minutes	17 hours, 40 minutes	7
878	17 hours, 40 minutes	1 day, 18 hours, 15 minutes*	19
879	17 hours, 40 minutes	17 hours, 40 minutes	1
880	17 hours, 40 minutes	17 hours, 40 minutes	1
881	21 hours, 9 minutes	21 hours, 9 minutes	9
882	21 hours, 9 minutes	21 hours, 9 minutes	1
883	14 hours, 18 minutes	16 hours, 45 minutes*	11
884	14 hours, 18 minutes	14 hours, 18 minutes	19
885	14 hours, 18 minutes	14 hours, 18 minutes	1
886	14 hours, 18 minutes	14 hours, 18 minutes	1
887	14 hours, 18 minutes	14 hours, 18 minutes	1
888	14 hours, 18 minutes	14 hours, 18 minutes	1
889	20 hours, 54 minutes	20 hours, 54 minutes	1

Interruption	First Restoration After 12 Hours	Final Restoration After 12 Hours	Customers interrupted
890	1 day, 1 hour, 4 minutes	1 day, 1 hour, 4 minutes	37
891	19 hours, 12 minutes	19 hours, 12 minutes	1
892	19 hours, 12 minutes	19 hours, 12 minutes	1
893	14 hours, 39 minutes	14 hours, 45 minutes*	24
894	14 hours, 39 minutes	14 hours, 39 minutes	1
895	15 hours	15 hours	1
896	1 day, 4 hours, 27 minutes	1 day, 4 hours, 27 minutes	797
897	1 day, 4 hours, 27 minutes	1 day, 4 hours, 27 minutes	1
898	1 day, 18 hours, 54 minutes	1 day, 18 hours, 54 minutes	5
899	1 day, 18 hours, 54 minutes	1 day, 18 hours, 54 minutes	1
900	12 hours, 26 minutes	12 hours, 26 minutes	21
901	12 hours, 26 minutes	12 hours, 26 minutes	74
902	12 hours, 26 minutes	12 hours, 26 minutes	23
903	12 hours, 28 minutes	12 hours, 28 minutes	1
904	15 hours, 24 minutes	15 hours, 24 minutes	1
905	15 hours, 24 minutes	15 hours, 24 minutes	1
906	20 hours, 55 minutes	20 hours, 55 minutes	1
907	20 hours, 55 minutes	20 hours, 55 minutes	30
908	18 hours, 22 minutes	18 hours, 22 minutes	1
909	18 hours, 22 minutes	18 hours, 22 minutes	18
910	14 hours, 38 minutes	14 hours, 38 minutes	1
911	14 hours, 38 minutes	22 hours, 52 minutes*	5
912	14 hours, 38 minutes	14 hours, 42 minutes*	1,574
913	14 hours, 38 minutes	14 hours, 38 minutes	1
914	13 hours, 6 minutes	13 hours, 6 minutes	82
915	13 hours, 6 minutes	13 hours, 6 minutes	15
916	13 hours, 6 minutes	13 hours, 6 minutes	1
917	14 hours, 5 minutes	1 day, 16 hours, 27 minutes*	13
918	8 days, 16 hours, 41 minutes	8 days, 16 hours, 41 minutes	1
919	17 hours, 27 minutes	17 hours, 27 minutes	158
920	14 hours, 57 minutes	14 hours, 57 minutes	5
921	14 hours, 57 minutes	14 hours, 57 minutes	1
922	1 day, 13 minutes	1 day, 13 minutes	1
923	16 hours, 38 minutes	17 hours, 47 minutes*	7
924	16 hours, 38 minutes	16 hours, 38 minutes	91
925	16 hours, 38 minutes	16 hours, 38 minutes	1
926	16 hours, 38 minutes	16 hours, 38 minutes	1,682
927	12 hours, 36 minutes	12 hours, 36 minutes	1
928	12 hours, 36 minutes	12 hours, 36 minutes	1
929	12 hours, 36 minutes	12 hours, 36 minutes	1
930	12 hours, 36 minutes	13 hours, 6 minutes*	8
931	12 hours, 36 minutes	12 hours, 36 minutes	3
932	1 day, 10 minutes	1 day, 10 minutes	25
933	1 day, 10 minutes	1 day, 14 minutes*	31
934	15 hours, 44 minutes	16 hours, 25 minutes*	26

Interruption	First Restoration After 12 Hours	Final Restoration After 12 Hours	Customers interrupted
935	15 hours, 44 minutes	17 hours, 49 minutes*	1,326
936	15 hours, 44 minutes	15 hours, 44 minutes	1
937	15 hours, 44 minutes	15 hours, 44 minutes	5
938	15 hours, 44 minutes	15 hours, 44 minutes	6
939	15 hours, 44 minutes	15 hours, 44 minutes	3
940	15 hours, 44 minutes	15 hours, 44 minutes	1
941	15 hours, 44 minutes	15 hours, 44 minutes	101
942	17 hours, 43 minutes	17 hours, 43 minutes	81
943	13 hours, 35 minutes	13 hours, 35 minutes	4
944	13 hours, 35 minutes	21 hours, 13 minutes*	26
945	13 hours, 35 minutes	13 hours, 35 minutes	1
946	13 hours, 35 minutes	13 hours, 35 minutes	1
947	15 hours, 41 minutes	15 hours, 41 minutes	1
948	15 hours, 41 minutes	15 hours, 41 minutes	16
949	15 hours, 41 minutes	15 hours, 41 minutes	3
950	18 hours, 54 minutes	18 hours, 54 minutes	2
951	18 hours, 54 minutes	18 hours, 54 minutes	1
952	18 hours, 54 minutes	18 hours, 54 minutes	5
953	19 hours	19 hours	1
954	19 hours	20 hours	1
955	21 hours, 43 minutes	21 hours, 43 minutes	1
956	21 hours, 43 minutes	21 hours, 43 minutes	1
957	17 hours, 19 minutes	17 hours, 19 minutes	1
958	17 hours, 19 minutes	17 hours, 19 minutes	1
959	17 hours, 19 minutes	17 hours, 19 minutes	1
960	17 hours, 19 minutes	17 hours, 19 minutes	1
961	17 hours, 19 minutes	17 hours, 19 minutes	45
962	2 days, 8 hours, 5 minutes	2 days, 8 hours, 5 minutes	7
963	1 day, 1 hour, 53 minutes	1 day, 1 hour, 53 minutes	1
964	21 hours	22 hours	1
965	22 hours	23 hours	72
966	21 hours, 12 minutes	21 hours, 12 minutes	7
967	21 hours, 12 minutes	21 hours, 12 minutes	1
968	21 hours, 12 minutes	21 hours, 12 minutes	6
969	21 hours, 12 minutes	21 hours, 16 minutes*	2,019
970	21 hours, 12 minutes	21 hours, 12 minutes	1
971	23 hours, 25 minutes	23 hours, 25 minutes	1
972	21 hours, 45 minutes	21 hours, 53 minutes*	7
973	23 hours, 26 minutes	23 hours, 26 minutes	1
974	23 hours, 26 minutes	23 hours, 26 minutes	36
975	1 day, 16 hours, 50 minutes	1 day, 16 hours, 50 minutes	1
976	15 hours, 9 minutes	15 hours, 18 minutes*	2,290
977	15 hours, 9 minutes	15 hours, 9 minutes	1
978	15 hours, 18 minutes	15 hours, 18 minutes	152
979	15 hours, 18 minutes	15 hours, 18 minutes	1

Interruption	First Restoration After 12 Hours	Final Restoration After 12 Hours	Customers interrupted
980	15 hours, 18 minutes	15 hours, 18 minutes	1
981	12 hours, 30 minutes	12 hours, 30 minutes	23
982	12 hours, 30 minutes	13 hours, 16 minutes*	246
983	12 hours, 30 minutes	12 hours, 30 minutes	1
984	12 hours, 30 minutes	12 hours, 30 minutes	1
985	23 hours, 42 minutes	23 hours, 42 minutes	610
986	23 hours, 42 minutes	23 hours, 42 minutes	1
987	12 hours, 53 minutes	12 hours, 53 minutes	4
988	12 hours, 53 minutes	12 hours, 53 minutes	1
989	12 hours, 53 minutes	12 hours, 53 minutes	1
990	13 hours, 4 minutes	13 hours, 4 minutes	129
991	13 hours, 4 minutes	13 hours, 4 minutes	1
992	13 hours, 4 minutes	13 hours, 41 minutes*	277
993	1 day, 11 hours, 42 minutes	1 day, 11 hours, 42 minutes	1
994	1 day, 16 hours, 6 minutes	1 day, 16 hours, 6 minutes	4
995	1 day, 3 hours, 32 minutes	1 day, 3 hours, 32 minutes	1
996	15 hours, 11 minutes	15 hours, 11 minutes	18
997	19 hours, 38 minutes	19 hours, 38 minutes	1
998	19 hours, 5 minutes	19 hours, 5 minutes	678
999	12 hours, 46 minutes	12 hours, 46 minutes	1,160
1000	14 hours, 23 minutes	14 hours, 23 minutes	1
1001	17 hours, 36 minutes	17 hours, 36 minutes	4
1002	17 hours, 36 minutes	17 hours, 36 minutes	1
1003	1 day, 6 hours, 27 minutes	1 day, 6 hours, 27 minutes	26
1004	1 day, 6 hours, 27 minutes	1 day, 6 hours, 27 minutes	1
1005	15 hours, 27 minutes	15 hours, 27 minutes	1
1006	15 hours, 27 minutes	15 hours, 27 minutes	1
1007	15 hours, 27 minutes	15 hours, 27 minutes	1
1008	4 days, 2 hours, 57 minutes	4 days, 2 hours, 57 minutes	4
1009	22 hours, 8 minutes	22 hours, 8 minutes	15
1010	13 hours, 7 minutes	16 hours, 23 minutes*	10
1011	13 hours, 7 minutes	13 hours, 7 minutes	19
1012	1 day, 9 hours, 51 minutes	1 day, 9 hours, 51 minutes	45
1013	13 hours, 37 minutes	13 hours, 37 minutes	1
1014	22 hours, 34 minutes	22 hours, 34 minutes	1
1015	22 hours, 34 minutes	22 hours, 34 minutes	2
1016	22 hours, 34 minutes	22 hours, 34 minutes	7
1017	13 hours, 51 minutes	13 hours, 51 minutes	7
1018	13 hours, 51 minutes	13 hours, 51 minutes	1
1019	15 hours, 42 minutes	15 hours, 42 minutes	41
1020	15 hours, 42 minutes	19 hours, 42 minutes	126
1021	5 days, 21 hours, 31 minutes	5 days, 21 hours, 31 minutes	1
1022	1 day, 1 hour, 34 minutes	1 day, 1 hour, 34 minutes	1
1023	1 day, 7 hours	1 day, 7 hours	1
1024	2 day, 7 hours	2 day, 7 hours	1

Interruption	First Restoration After 12 Hours	Final Restoration After 12 Hours	Customers interrupted
1025	21 hours, 52 minutes	21 hours, 52 minutes	57
1026	17 hours, 31 minutes	17 hours, 31 minutes	29
1027	1 day, 9 hours, 11 minutes	1 day, 9 hours, 11 minutes	1
1028	22 hours, 21 minutes	22 hours, 21 minutes	16
1029	22 hours, 21 minutes	22 hours, 21 minutes	1
1030	16 hours, 10 minutes	16 hours, 10 minutes	1
1031	16 hours, 10 minutes	16 hours, 10 minutes	7
1032	1 day, 15 hours, 6 minutes	1 day, 15 hours, 34 minutes*	26
1033	18 hours, 3 minutes	18 hours, 3 minutes	1,412
1034	18 hours, 3 minutes	18 hours, 3 minutes	2
1035	1 day, 21 hours, 37 minutes	1 day, 21 hours, 37 minutes	1
1036	17 hours, 2 minutes	17 hours, 2 minutes	1
1037	18 hours, 32 minutes	18 hours, 32 minutes	1
1038	18 hours, 32 minutes	18 hours, 32 minutes	8
1039	18 hours, 32 minutes	18 hours, 32 minutes	1
1040	23 hours, 8 minutes	23 hours, 8 minutes	16
1041	4 days, 20 hours, 36 minutes	4 days, 20 hours, 36 minutes	1
1042	22 hours, 43 minutes	22 hours, 43 minutes	1,949
1043	22 hours, 43 minutes	23 hours, 14 minutes	47
1044	22 hours, 43 minutes	22 hours, 43 minutes	1
1045	17 hours, 11 minutes	18 hours, 37 minutes*	18
1046	17 hours, 11 minutes	17 hours, 11 minutes	26
1047	21 hours, 31 minutes	21 hours, 31 minutes	1
1048	1 day, 4 hours, 15 minutes	1 day, 4 hours, 15 minutes	3
1049	1 day, 4 hours, 15 minutes	1 day, 4 hours, 15 minutes	10
1050	3 days, 25 minutes	3 days, 25 minutes	1
1051	19 hours, 16 minutes	19 hours, 16 minutes	1
1052	19 hours, 16 minutes	19 hours, 16 minutes	1
1053	19 hours, 16 minutes	19 hours, 16 minutes	1
1054	19 hours, 42 minutes	19 hours, 42 minutes	8
1055	23 hours, 17 minutes	23 hours, 17 minutes	1
1056	20 hours, 29 minutes	20 hours, 29 minutes	387
1057	2 days, 18 hours, 50 minutes	2 days, 18 hours, 50 minutes	1
1058	12 hours, 32 minutes	12 hours, 32 minutes	1
1059	12 hours, 32 minutes	12 hours, 32 minutes	1
1060	15 hours, 8 minutes	15 hours, 8 minutes	127
1061	21 hours, 18 minutes	21 hours, 18 minutes	7
1062	21 hours, 18 minutes	21 hours, 18 minutes	1
1063	21 hours, 18 minutes	21 hours, 18 minutes	1
1064	2 days, 2 hours, 37 minutes	2 days, 2 hours, 37 minutes	1
1065	18 hours, 9 minutes	22 hours, 38 minutes*	14
1066	16 hours, 54 minutes	16 hours, 54 minutes	99
1067	16 hours, 54 minutes	16 hours, 54 minutes	13
1068	16 hours, 54 minutes	16 hours, 54 minutes	1
1069	17 hours, 3 minutes	17 hours, 3 minutes	58

Interruption	First Restoration After 12 Hours	Final Restoration After 12 Hours	Customers interrupted
1070	17 hours, 3 minutes	1 day, 11 hours, 30 minutes*	333
1071	17 hours, 3 minutes	17 hours, 3 minutes	17
1072	2 days, 10 hours, 15 minutes	2 days, 10 hours, 15 minutes	1
1073	20 hours, 32 minutes	22 hours, 3 minutes*	11
1074	20 hours, 32 minutes	20 hours, 32 minutes	1
1075	13 hours, 40 minutes	13 hours, 40 minutes	4
1076	13 hours, 40 minutes	13 hours, 40 minutes	1
1077	13 hours, 40 minutes	13 hours, 40 minutes	1,846
1078	1 day, 2 minutes	1 day, 2 minutes	1
1079	1 day, 2 minutes	1 day, 2 minutes	1
1080	1 day, 2 hours, 44 minutes	1 day, 2 hours, 44 minutes	1
1081	22 hours, 50 minutes	22 hours, 50 minutes	1
1082	22 hours, 50 minutes	22 hours, 50 minutes	3
1083	3 days, 22 hours, 59 minutes	3 days, 22 hours, 59 minutes	1
1084	1 day, 1 hour, 39 minutes	1 day, 1 hour, 39 minutes	1
1085	1 day, 1 hour, 39 minutes	1 day, 1 hour, 39 minutes	12
1086	22 hours, 12 minutes	22 hours, 12 minutes	1
1087	22 hours, 12 minutes	22 hours, 12 minutes	1
1088	21 hours, 29 minutes	21 hours, 29 minutes	1
1089	1 day, 7 hours, 39 minutes	1 day, 7 hours, 39 minutes	6
1090	17 hours, 26 minutes	17 hours, 26 minutes	1
1091	17 hours, 26 minutes	17 hours, 26 minutes	1
1092	12 hours, 31 minutes	12 hours, 31 minutes	2,290
1093	12 hours, 31 minutes	12 hours, 31 minutes	10
1094	12 hours, 31 minutes	12 hours, 31 minutes	40
1095	20 hours, 23 minutes	20 hours, 23 minutes	1
1096	3 days, 4 hours, 45 minutes	3 days, 4 hours, 45 minutes	1
1097	2 days, 9 hours, 57 minutes	2 days, 9 hours, 57 minutes	1
1098	1 day, 7 hours, 44 minutes	1 day, 7 hours, 44 minutes	11
1099	1 day, 7 hours, 44 minutes	1 day, 7 hours, 44 minutes	6
1100	16 hours, 29 minutes	16 hours, 29 minutes	1
1101	16 hours, 29 minutes	16 hours, 29 minutes	833
1102	14 hours, 25 minutes	14 hours, 25 minutes	1
1103	14 hours, 25 minutes	14 hours, 25 minutes	1
1104	12 hours, 34 minutes	12 hours, 34 minutes	11
1105	12 hours, 34 minutes	12 hours, 34 minutes	1
1106	12 hours, 34 minutes	12 hours, 34 minutes	1
1107	12 hours, 34 minutes	12 hours, 59 minutes*	46
1108	14 hours, 6 minutes	14 hours, 6 minutes	1
1109	14 hours, 6 minutes	14 hours, 6 minutes	1
1110	14 hours, 6 minutes	14 hours, 6 minutes	17
1111	14 hours, 6 minutes	14 hours, 6 minutes	122
1112	13 hours, 29 minutes	13 hours, 29 minutes	1
1113	13 hours, 29 minutes	13 hours, 29 minutes	59
1114	13 hours, 29 minutes	13 hours, 29 minutes	1

Interruption	First Restoration After 12 Hours	Final Restoration After 12 Hours	Customers interrupted
1115	14 hours, 26 minutes	22 hours, 46 minutes*	3,440
1116	1 day, 19 hours, 23 minutes	1 day, 19 hours, 23 minutes	2
1117	19 hours, 55 minutes	19 hours, 55 minutes	1
1118	19 hours, 55 minutes	19 hours, 55 minutes	1
1119	19 hours, 55 minutes	1 day, 3 hours, 25 minutes*	58
1120	17 hours, 57 minutes	17 hours, 57 minutes	1
1121	1 day, 18 hours, 21 minutes	1 day, 18 hours, 21 minutes	1
1122	18 hours, 23 minutes	1 day, 1 hour, 43 minutes*	37
1123	18 hours, 23 minutes	18 hours, 23 minutes	13
1124	14 hours, 21 minutes	14 hours, 21 minutes	5
1125	14 hours, 21 minutes	14 hours, 21 minutes	1
1126	14 hours, 21 minutes	14 hours, 21 minutes	35
1127	19 hours, 27 minutes	19 hours, 27 minutes	1
1128	19 hours, 27 minutes	19 hours, 27 minutes	1
1129	1 day, 8 hours, 48 minutes	1 day, 8 hours, 48 minutes	127
1130	23 hours, 51 minutes	23 hours, 51 minutes	1
1131	16 hours, 23 minutes	16 hours, 54 minutes*	1,364
1132	16 hours, 23 minutes	16 hours, 23 minutes	1
1133	16 hours, 23 minutes	16 hours, 23 minutes	1
1134	16 hours, 23 minutes	16 hours, 23 minutes	43
1135	12 hours, 29 minutes	12 hours, 29 minutes	57
1136	12 hours, 29 minutes	12 hours, 29 minutes	1
1137	12 hours, 29 minutes	12 hours, 29 minutes	1
1138	13 hours, 30 minutes	13 hours, 30 minutes	1
1139	13 hours, 30 minutes	13 hours, 30 minutes	1
1140	13 hours, 30 minutes	17 hours, 41 minutes*	31
1141	2 days, 42 minutes	2 days, 10 hours, 32 minutes*	1,690
1142	14 hours, 28 minutes	14 hours, 28 minutes	1
1143	14 hours, 28 minutes	14 hours, 28 minutes	1
1144	14 hours, 28 minutes	14 hours, 28 minutes	1
1145	14 hours, 28 minutes	14 hours, 28 minutes	1
1146	14 hours, 28 minutes	14 hours, 28 minutes	24
1147	14 hours, 4 minutes	14 hours, 4 minutes	1
1148	14 hours, 4 minutes	14 hours, 4 minutes	4
1149	19 hours, 23 minutes	19 hours, 23 minutes	6
1150	19 hours, 23 minutes	19 hours, 23 minutes	1
1151	1 day, 6 hours, 55 minutes	1 day, 6 hours, 55 minutes	1
1152	2 days, 1 hour, 2 minutes	2 days, 1 hour, 2 minutes	15
1153	2 days, 6 hours, 19 minutes	2 days, 6 hours, 19 minutes	1
1154	1 day, 38 minutes	1 day, 38 minutes	1
1155	1 day, 38 minutes	1 day, 8 hours, 16 minutes*	814
1156	1 day, 38 minutes	1 day, 38 minutes	1
1157	1 day, 38 minutes	1 day, 38 minutes	1
1158	15 hours, 15 minutes	15 hours, 15 minutes	8
1159	15 hours, 15 minutes	15 hours, 15 minutes	2

Interruption	First Restoration After 12 Hours	Final Restoration After 12 Hours	Customers interrupted
1160	12 hours, 1 minute	12 hours, 1 minute	1
1161	12 hours, 1 minute	12 hours, 1 minute	1
1162	12 hours, 1 minute	12 hours, 1 minute	12
1163	12 hours, 1 minute	12 hours, 1 minute	1
1164	12 hours, 1 minute	12 hours, 1 minute	1
1165	12 hours, 1 minute	12 hours, 1 minute	1
1166	12 hours, 1 minute	1 day, 22 hours, 43 minutes*	32
1167	3 days, 11 hours, 23 minutes	3 days, 11 hours, 23 minutes	1
1168	15 hours, 50 minutes	15 hours, 50 minutes	1
1169	15 hours, 50 minutes	23 hours, 39 minutes*	308
1170	1 day, 13 hours, 8 minutes	1 day, 13 hours, 8 minutes	6
1171	1 day, 4 hours, 13 minutes	1 day, 4 hours, 13 minutes	13
1172	1 day, 2 hours, 30 minutes	1 day, 2 hours, 30 minutes	1
1173	1 day, 2 hours, 30 minutes	1 day, 2 hours, 30 minutes	1
1174	1 day, 5 hours, 45 minutes	1 day, 5 hours, 45 minutes	1
1175	1 day, 5 hours, 45 minutes	1 day, 5 hours, 45 minutes	1
1176	1 day, 4 hours, 34 minutes	1 day, 4 hours, 34 minutes	1
1177	21 hours, 34 minutes	21 hours, 34 minutes	1
1178	21 hours, 34 minutes	21 hours, 34 minutes	13
1179	21 hours, 34 minutes	21 hours, 34 minutes	1
1180	21 hours, 51 minutes	21 hours, 51 minutes	1
1181	19 hours, 58 minutes	19 hours, 58 minutes	26
1182	21 hours, 54 minutes	21 hours, 54 minutes	74
1183	18 hours, 43 minutes	18 hours, 43 minutes	1
1184	1 day, 4 hours, 16 minutes	1 day, 4 hours, 16 minutes	1
1185	23 hours, 12 minutes	23 hours, 12 minutes	1
1186	21 hours, 11 minutes	21 hours, 11 minutes	1
1187	21 hours, 40 minutes	21 hours, 40 minutes	2
1188	21 hours, 40 minutes	21 hours, 40 minutes	8
1189	17 hours, 7 minutes	17 hours, 7 minutes	63
1190	17 hours, 7 minutes	17 hours, 7 minutes	1
1191	14 hours, 41 minutes	14 hours, 41 minutes	5
1192	18 hours, 58 minutes	18 hours, 58 minutes	1
1193	1 day, 3 hours, 13 minutes	1 day, 3 hours, 13 minutes	1
1194	1 day, 3 hours, 13 minutes	1 day, 3 hours, 13 minutes	1
1195	3 days, 5 hours, 3 minutes	3 days, 5 hours, 3 minutes	1
1196	1 day, 3 hours, 39 minutes	1 day, 3 hours, 39 minutes	1
1197	1 day, 18 minutes	1 day, 18 minutes	91
1198	1 day, 18 minutes	1 day, 18 minutes	4
1199	1 day, 18 minutes	1 day, 18 minutes	12
1200	1 day, 2 hours, 39 minutes	1 day, 2 hours, 39 minutes	1
1201	23 hours, 21 minutes	23 hours, 21 minutes	1
1202	23 hours, 21 minutes	23 hours, 21 minutes	1
1203	23 hours, 28 minutes	23 hours, 28 minutes	1
1204	23 hours, 28 minutes	23 hours, 28 minutes	1

Interruption	First Restoration After 12 Hours	Final Restoration After 12 Hours	Customers interrupted
1205	22 hours, 53 minutes	22 hours, 54 minutes*	87
1206	18 hours, 53 minutes	18 hours, 53 minutes	1
1207	18 hours, 53 minutes	18 hours, 53 minutes	1
1208	19 hours, 19 minutes	19 hours, 19 minutes	1
1209	19 hours, 19 minutes	19 hours, 19 minutes	1
1210	1 day, 2 hours, 7 minutes	1 day, 2 hours, 7 minutes	1
1211	22 hours, 37 minutes	22 hours, 37 minutes	1
1212	18 hours, 44 minutes	18 hours, 44 minutes	1
1213	18 hours, 44 minutes	18 hours, 44 minutes	6
1214	18 hours, 44 minutes	18 hours, 44 minutes	1
1215	13 hours, 57 minutes	13 hours, 57 minutes	1
1216	13 hours, 57 minutes	13 hours, 57 minutes	1
1217	13 hours, 57 minutes	3 days, 50 minutes*	193
1218	17 hours, 49 minutes	17 hours, 49 minutes	11
1219	17 hours, 49 minutes	17 hours, 49 minutes	7
1220	17 hours, 49 minutes	17 hours, 49 minutes	1
1221	23 hours, 36 minutes	23 hours, 36 minutes	1
1222	15 hours, 21 minutes	15 hours, 21 minutes	1
1223	15 hours, 21 minutes	15 hours, 21 minutes	1
1224	17 hours, 34 minutes	17 hours, 34 minutes	1
1225	17 hours, 34 minutes	17 hours, 34 minutes	2
1226	20 hours, 38 minutes	20 hours, 38 minutes	2,428
1227	20 hours, 38 minutes	22 hours, 23 minutes*	324
1228	1 day, 42 minutes	1 day, 42 minutes	1
1229	14 hours, 37 minutes	14 hours, 37 minutes	32
1230	14 hours, 37 minutes	14 hours, 37 minutes	1
1231	14 hours, 37 minutes	14 hours, 37 minutes	1
1232	2 days, 3 minutes	2 days, 3 minutes	1
1233	1 day, 8 hours, 29 minutes	1 day, 8 hours, 29 minutes	1
1234	1 day, 19 minutes	1 day, 19 minutes	4
1235	1 day, 19 minutes	1 day, 1 hour, 17 minutes*	20
1236	2 days, 39 minutes	2 days, 39 minutes	1
1237	1 day, 3 hours, 58 minutes	1 day, 3 hours, 58 minutes	5
1238	16 hours, 21 minutes	16 hours, 21 minutes	7
1239	16 hours, 21 minutes	16 hours, 21 minutes	1
1240	1 day, 6 hours, 47 minutes	1 day, 6 hours, 47 minutes	1
1241	12 hours, 15 minutes	12 hours, 15 minutes	1
1242	12 hours, 15 minutes	12 hours, 15 minutes	7
1243	12 hours, 15 minutes	12 hours, 15 minutes	1
1244	12 hours, 15 minutes	12 hours, 15 minutes	1
1245	1 day, 3 hours, 45 minutes	1 day, 3 hours, 45 minutes	1
1246	1 day, 4 hours, 28 minutes	1 day, 4 hours, 28 minutes	1
1247	18 hours, 37 minutes	18 hours, 37 minutes	14
1248	18 hours, 37 minutes	18 hours, 37 minutes	9
1249	18 hours, 37 minutes	18 hours, 37 minutes	1

Interruption	First Restoration After 12 Hours	Final Restoration After 12 Hours	Customers interrupted
1250	18 hours, 37 minutes	18 hours, 37 minutes	1
1251	21 hours, 4 minutes	21 hours, 4 minutes	3
1252	21 hours, 4 minutes	21 hours, 4 minutes	1
1253	21 hours, 4 minutes	21 hours, 4 minutes	1
1254	21 hours, 37 minutes	21 hours, 37 minutes	1
1255	21 hours, 37 minutes	21 hours, 37 minutes	4
1256	2 days, 2 minutes	2 days, 2 minutes	1
1257	15 hours, 13 minutes	15 hours, 13 minutes	1
1258	15 hours, 13 minutes	15 hours, 13 minutes	87
1259	15 hours, 13 minutes	15 hours, 13 minutes	1
1260	18 hours, 50 minutes	18 hours, 50 minutes	1
1261	18 hours, 50 minutes	18 hours, 50 minutes	26
1262	18 hours, 50 minutes	18 hours, 50 minutes	3
1263	18 hours, 50 minutes	18 hours, 50 minutes	1
1264	1 day, 1 hour, 37 minutes	1 day, 1 hour, 37 minutes	2
1265	1 day, 10 hours, 28 minutes	1 day, 10 hours, 28 minutes	1
1266	1 day, 10 hours, 28 minutes	1 day, 10 hours, 28 minutes	1
1267	14 hours, 12 minutes	14 hours, 12 minutes	1
1268	14 hours, 12 minutes	14 hours, 12 minutes	1
1269	1 day, 1 hour, 59 minutes	1 day, 1 hour, 59 minutes	1
1270	1 day, 6 hours, 12 minutes	1 day, 6 hours, 12 minutes	1
1271	1 day, 12 hours, 51 minutes	1 day, 12 hours, 51 minutes	1
1272	14 hours, 56 minutes	14 hours, 56 minutes	1
1273	1 day, 15 hours, 24 minutes	1 day, 15 hours, 24 minutes	1
1274	16 hours, 39 minutes	16 hours, 39 minutes	742
1275	16 hours, 39 minutes	16 hours, 39 minutes	1
1276	1 day, 7 hours, 51 minutes	1 day, 7 hours, 51 minutes	1
1277	1 day, 5 hours, 42 minutes	1 day, 5 hours, 42 minutes	1
1278	1 day, 33 minutes	1 day, 33 minutes	1
1279	1 day, 33 minutes	1 day, 33 minutes	1
1280	1 day, 45 minutes	1 day, 45 minutes	10
1281	16 hours, 17 minutes	16 hours, 17 minutes	8
1282	12 hours, 35 minutes	1 day, 19 minutes*	528
1283	12 hours, 35 minutes	12 hours, 35 minutes	24
1284	12 hours, 35 minutes	12 hours, 35 minutes	1
1285	1 day, 1 hour, 25 minutes	1 day, 1 hour, 25 minutes	1
1286	1 day, 1 hour, 25 minutes	1 day, 1 hour, 25 minutes	1
1287	19 hours, 24 minutes	19 hours, 24 minutes	1
1288	14 hours, 2 minutes	14 hours, 2 minutes	10
1289	14 hours, 2 minutes	14 hours, 2 minutes	1
1290	16 hours, 56 minutes	16 hours, 56 minutes	1
1291	16 hours, 56 minutes	16 hours, 56 minutes	38
1292	16 hours, 56 minutes	16 hours, 56 minutes	1
1293	19 hours, 13 minutes	19 hours, 13 minutes	7
1294	19 hours, 13 minutes	19 hours, 13 minutes	1

Interruption	First Restoration After 12 Hours	Final Restoration After 12 Hours	Customers interrupted
1295	1 day, 9 hours, 29 minutes	1 day, 9 hours, 29 minutes	2
1296	13 hours, 15 minutes	13 hours, 15 minutes	1
1297	13 hours, 15 minutes	13 hours, 15 minutes	1
1298	13 hours, 33 minutes	18 hours, 15 minutes*	322
1299	13 hours, 33 minutes	13 hours, 33 minutes	2
1300	13 hours, 33 minutes	1 day, 6 hours, 24 minutes*	294
1301	13 hours, 33 minutes	13 hours, 33 minutes	31
1302	13 hours, 33 minutes	13 hours, 33 minutes	1
1303	3 days, 46 minutes	3 days, 46 minutes	1
1304	19 hours, 20 minutes	19 hours, 20 minutes	1
1305	19 hours, 20 minutes	19 hours, 20 minutes	1
1306	20 hours, 30 minutes	20 hours, 30 minutes	1
1307	20 hours, 30 minutes	20 hours, 30 minutes	1
1308	12 hours, 37 minutes	12 hours, 37 minutes	1
1309	12 hours, 37 minutes	12 hours, 37 minutes	1
1310	12 hours, 37 minutes	12 hours, 40 minutes*	2,419
1311	1 day, 14 hours, 8 minutes	1 day, 14 hours, 8 minutes	1
1312	3 days, 7 hours, 55 minutes	3 days, 7 hours, 55 minutes	1
1313	23 hours, 38 minutes	23 hours, 38 minutes	225
1314	23 hours, 38 minutes	1 day, 56 minutes*	1,228
1315	23 hours, 15 minutes	23 hours, 15 minutes	1
1316	1 day, 46 minutes	1 day, 3 hours, 56 minutes*	5
1317	1 day, 20 hours, 14 minutes	1 day, 20 hours, 14 minutes	1
1318	21 hours, 3 minutes	21 hours, 3 minutes	696
1319	21 hours, 3 minutes	21 hours, 3 minutes	1
1320	17 hours, 45 minutes	22 hours, 27 minutes*	11
1321	17 hours, 45 minutes	17 hours, 45 minutes	2
1322	17 hours, 45 minutes	17 hours, 45 minutes	495
1323	1 day, 18 hours, 55 minutes	1 day, 18 hours, 55 minutes	11
1324	1 day, 19 hours, 9 minutes	1 day, 19 hours, 9 minutes	1
1325	1 day, 22 hours, 29 minutes	1 day, 22 hours, 29 minutes	13
1326	1 day, 2 hours, 5 minutes	1 day, 2 hours, 5 minutes	3
1327	1 day, 18 hours, 38 minutes	1 day, 18 hours, 38 minutes	1
1328	1 day, 14 hours, 49 minutes	1 day, 14 hours, 49 minutes	18
1329	1 day, 13 hours, 54 minutes	1 day, 13 hours, 54 minutes	3
1330	20 hours, 7 minutes	20 hours, 7 minutes	375
1331	20 hours, 7 minutes	20 hours, 7 minutes	1
1332	20 hours, 7 minutes	20 hours, 12 minutes*	504
1333	1 day, 49 minutes	1 day, 49 minutes	16
1334	22 hours, 2 minutes	22 hours, 2 minutes	4
1335	22 hours, 41 minutes	22 hours, 41 minutes	1
1336	22 hours, 41 minutes	1 day, 17 minutes*	162
1337	1 day, 15 hours, 47 minutes	1 day, 15 hours, 47 minutes	1
1338	1 day, 19 hours, 45 minutes	1 day, 21 hours, 11 minutes*	23
1339	1 day, 6 hours, 51 minutes	1 day, 6 hours, 51 minutes	3

Interruption	First Restoration After 12 Hours	Final Restoration After 12 Hours	Customers interrupted
1340	1 day, 4 hours, 20 minutes	1 day, 4 hours, 20 minutes	1
1341	1 day, 14 hours, 17 minutes	1 day, 14 hours, 17 minutes	4
1342	23 hours, 23 minutes	23 hours, 23 minutes	1
1343	23 hours, 23 minutes	23 hours, 23 minutes	5
1344	15 hours, 36 minutes	15 hours, 36 minutes	571
1345	15 hours, 36 minutes	15 hours, 36 minutes	1
1346	1 day, 5 hours, 53 minutes	1 day, 5 hours, 53 minutes	7
1347	2 days, 35 minutes	2 days, 35 minutes	1
1348	1 day, 24 minutes	1 day, 24 minutes	1
1349	22 hours, 54 minutes	22 hours, 54 minutes	1
1350	17 hours, 38 minutes	17 hours, 38 minutes	17
1351	1 day, 4 hours, 55 minutes	1 day, 4 hours, 55 minutes	3
1352	12 hours, 4 minutes	17 hours, 24 minutes*	1,807
1353	12 hours, 4 minutes	16 hours, 12 minutes*	38
1354	1 day, 11 hours, 27 minutes	1 day, 11 hours, 27 minutes	1
1355	1 day, 1 hour, 29 minutes	1 day, 1 hour, 29 minutes	1
1356	21 hours, 48 minutes	21 hours, 48 minutes	1
1357	21 hours, 48 minutes	1 day, 5 hours, 20 minutes*	14
1358	12 hours, 23 minutes	12 hours, 23 minutes	1
1359	1 day, 6 hours, 33 minutes	1 day, 6 hours, 33 minutes	1
1360	1 day, 5 hours, 57 minutes	1 day, 5 hours, 57 minutes	1
1361	1 day, 26 minutes	1 day, 26 minutes	3
1362	1 day, 2 hours, 17 minutes	1 day, 2 hours, 17 minutes	1
1363	22 hours, 58 minutes	22 hours, 58 minutes	7
1364	22 hours, 58 minutes	22 hours, 58 minutes	20
1365	1 day, 20 hours, 27 minutes	1 day, 20 hours, 27 minutes	98
1366	1 day, 1 hour	1 day, 1 hour	1
1367	18 hours, 15 minutes	4 days, 18 hours*	33
1368	18 hours, 15 minutes	18 hours, 44 minutes*	380
1369	1 day, 5 hours, 19 minutes	1 day, 5 hours, 19 minutes	1
1370	18 hours, 45 minutes	18 hours, 45 minutes	1
1371	19 hours, 43 minutes	19 hours, 43 minutes	1
1372	16 hours, 41 minutes	16 hours, 41 minutes	41
1373	16 hours, 41 minutes	16 hours, 41 minutes	5
1374	17 hours, 50 minutes	17 hours, 50 minutes	1
1375	17 hours, 50 minutes	17 hours, 50 minutes	10
1376	17 hours, 50 minutes	17 hours, 50 minutes	149
1377	20 hours, 56 minutes	20 hours, 56 minutes	97
1378	1 day, 18 hours, 50 minutes	1 day, 18 hours, 50 minutes	2
1379	21 hours, 15 minutes	21 hours, 15 minutes	1
1380	15 hours, 48 minutes	15 hours, 48 minutes	1
1381	15 hours, 48 minutes	15 hours, 48 minutes	25
1382	1 day, 3 hours, 49 minutes	1 day, 8 hours, 46 minutes*	91
1383	16 hours, 16 minutes	16 hours, 16 minutes	1
1384	1 day, 28 minutes	1 day, 28 minutes	1

Interruption	First Restoration After 12 Hours	Final Restoration After 12 Hours	Customers interrupted
1385	1 day, 5 hours, 46 minutes	1 day, 5 hours, 46 minutes	1
1386	1 day, 4 hours, 47 minutes	1 day, 4 hours, 47 minutes	1
1387	16 hours, 15 minutes	16 hours, 26 minutes*	1,242
1388	1 day, 23 hours, 42 minutes	1 day, 23 hours, 42 minutes	14
1389	1 day, 6 hours, 50 minutes	1 day, 6 hours, 50 minutes	1
1390	1 day, 6 hours, 50 minutes	1 day, 6 hours, 50 minutes	1
1391	19 hours, 25 minutes	19 hours, 25 minutes	1
1392	19 hours, 25 minutes	19 hours, 25 minutes	1
1393	14 hours, 29 minutes	15 hours, 17 minutes*	73
1394	14 hours, 29 minutes	14 hours, 29 minutes	1
1395	14 hours, 29 minutes	14 hours, 36 minutes*	57
1396	14 hours, 29 minutes	14 hours, 29 minutes	1
1397	16 hours, 34 minutes	16 hours, 34 minutes	1
1398	2 days, 13 hours, 4 minutes	2 days, 13 hours, 4 minutes	1
1399	1 day, 10 hours, 41 minutes	2 days, 3 hours, 57 minutes*	52
1400	19 hours, 21 minutes	19 hours, 21 minutes	50
1401	2 days, 2 hours, 43 minutes	2 days, 2 hours, 43 minutes	1
1402	1 day, 53 minutes	1 day, 53 minutes	1
1403	23 hours, 4 minutes	1 day, 1 minute*	38
1404	23 hours, 4 minutes	23 hours, 4 minutes	1
1405	23 hours, 4 minutes	23 hours, 4 minutes	9
1406	1 day, 11 hours, 26 minutes	1 day, 13 hours, 12 minutes*	37
1407	16 hours, 2 minutes	16 hours, 2 minutes	1
1408	16 hours, 2 minutes	16 hours, 2 minutes	1
1409	16 hours, 8 minutes	1 day, 16 hours, 50 minutes*	71
1410	16 hours, 8 minutes	16 hours, 8 minutes	1
1411	18 hours, 17 minutes	18 hours, 17 minutes	10
1412	18 hours, 17 minutes	18 hours, 17 minutes	59
1413	16 hours, 12 minutes	16 hours, 12 minutes	7
1414	16 hours, 12 minutes	16 hours, 12 minutes	1
1415	1 day, 15 hours, 13 minutes	1 day, 15 hours, 13 minutes	12
1416	1 day, 17 hours, 47 minutes	1 day, 17 hours, 47 minutes	1
1417	12 hours, 13 minutes	12 hours, 13 minutes	1
1418	12 hours, 13 minutes	12 hours, 13 minutes	1
1419	23 hours, 56 minutes	23 hours, 56 minutes	1
1420	17 hours, 22 minutes	17 hours, 22 minutes	1
1421	17 hours, 22 minutes	17 hours, 22 minutes	1
1422	1 day, 5 hours, 26 minutes	1 day, 5 hours, 26 minutes	1
1423	1 day, 12 hours, 12 minutes	1 day, 12 hours, 12 minutes	1
1424	1 day, 1 hour, 43 minutes	1 day, 1 hour, 43 minutes	1
1425	1 day, 1 hour, 43 minutes	1 day, 1 hour, 43 minutes	1
1426	15 hours, 14 minutes	15 hours, 14 minutes	1
1427	15 hours, 2 minutes	20 hours, 27 minutes*	4
1428	15 hours, 2 minutes	15 hours, 2 minutes	1
1429	15 hours, 57 minutes	16 hours, 11 minutes*	186

Interruption	First Restoration After 12 Hours	Final Restoration After 12 Hours	Customers interrupted
1430	1 day, 10 hours, 48 minutes	1 day, 10 hours, 48 minutes	1
1431	1 day, 21 hours, 38 minutes	1 day, 21 hours, 38 minutes	1
1432	1 day, 6 hours, 42 minutes	1 day, 6 hours, 42 minutes	29
1433	1 day, 6 hours, 42 minutes	1 day, 6 hours, 42 minutes	1
1434	16 hours, 43 minutes	16 hours, 43 minutes	1
1435	19 hours, 30 minutes	19 hours, 30 minutes	1
1436	19 hours, 30 minutes	23 hours, 31 minutes*	17
1437	19 hours, 30 minutes	19 hours, 30 minutes	38
1438	19 hours, 30 minutes	20 hours, 13 minutes*	11
1439	17 hours, 33 minutes	17 hours, 33 minutes	1
1440	1 day, 12 hours, 50 minutes	1 day, 12 hours, 50 minutes	25
1441	20 hours, 46 minutes	20 hours, 46 minutes	50
1442	20 hours, 46 minutes	20 hours, 46 minutes	6
1443	1 day, 21 hours, 44 minutes	1 day, 21 hours, 44 minutes	1
1444	1 day, 5 hours, 21 minutes	1 day, 5 hours, 21 minutes	1
1445	21 hours	21 hours	1
1446	22 hours	22 hours	1
1447	18 hours	18 hours	19
1448	20 hours, 3 minutes	20 hours, 3 minutes	1
1449	1 day, 14 hours, 4 minutes	1 day, 14 hours, 4 minutes	1
1450	1 day, 19 hours, 14 minutes	1 day, 19 hours, 14 minutes	2
1451	20 hours, 45 minutes	22 hours, 22 minutes*	206
1452	20 hours, 45 minutes	20 hours, 45 minutes	33
1453	22 hours, 27 minutes	22 hours, 27 minutes	51
1454	1 day, 9 hours, 59 minutes	1 day, 9 hours, 59 minutes	7
1455	16 hours, 48 minutes	16 hours, 48 minutes	1
1456	1 day, 6 hours, 46 minutes	1 day, 6 hours, 46 minutes	1
1457	6 days, 1 hour, 11 minutes	6 days, 1 hour, 11 minutes	1
1458	1 day, 15 hours, 57 minutes	1 day, 15 hours, 57 minutes	13
1459	1 day, 1 hour, 47 minutes	1 day, 1 hour, 47 minutes	1
1460	18 hours, 59 minutes	18 hours, 59 minutes	1
1461	21 hours, 1 minute	21 hours, 1 minute	1
1462	15 hours, 46 minutes	16 hours, 48 minutes*	174
1463	20 hours, 22 minutes	20 hours, 22 minutes	1
1464	23 hours, 44 minutes	23 hours, 44 minutes	1
1465	23 hours, 44 minutes	23 hours, 44 minutes	1
1466	18 hours, 8 minutes	18 hours, 8 minutes	1
1467	18 hours, 8 minutes	18 hours, 8 minutes	17
1468	17 hours, 5 minutes	17 hours, 5 minutes	7
1469	17 hours, 5 minutes	17 hours, 22 minutes*	107
1470	6 days, 3 hours, 7 minutes	6 days, 3 hours, 7 minutes	1
1471	1 day, 1 hour, 8 minutes	1 day, 1 hour, 8 minutes	1
1472	1 day, 4 minutes	1 day, 4 minutes	10
1473	1 day, 2 hours, 22 minutes	1 day, 2 hours, 22 minutes	1
1474	1 day, 2 hours, 22 minutes	1 day, 2 hours, 22 minutes	1

Interruption	First Restoration After 12 Hours	Final Restoration After 12 Hours	Customers interrupted
1475	23 hours, 54 minutes	23 hours, 54 minutes	1
1476	1 day, 9 hours, 53 minutes	1 day, 9 hours, 53 minutes	1
1477	1 day, 7 hours, 50 minutes	1 day, 8 hours, 7 minutes*	370
1478	1 day, 1 hour, 56 minutes	1 day, 1 hour, 56 minutes	43
1479	1 day, 17 hours, 58 minutes	1 day, 17 hours, 58 minutes	1
1480	1 day, 17 hours, 11 minutes	1 day, 17 hours, 11 minutes	8
1481	1 day, 50 minutes	1 day, 50 minutes	22
1482	21 hours, 24 minutes	1 day, 3 hours, 3 minutes*	510
1483	17 hours, 10 minutes	17 hours, 10 minutes	1
1484	17 hours, 10 minutes	17 hours, 10 minutes	2
1485	17 hours, 10 minutes	17 hours, 10 minutes	44
1486	19 hours, 32 minutes	19 hours, 32 minutes	11
1487	19 hours, 32 minutes	19 hours, 32 minutes	198
1488	22 hours, 11 minutes	22 hours, 11 minutes	55
1489	1 day, 23 hours, 6 minutes	1 day, 23 hours, 6 minutes	231
1490	1 day, 7 hours, 20 minutes	1 day, 7 hours, 20 minutes	1
1491	1 day, 7 hours, 20 minutes	1 day, 7 hours, 20 minutes	1
1492	1 day, 7 hours, 27 minutes	1 day, 7 hours, 27 minutes	1
1493	17 hours, 41 minutes	17 hours, 41 minutes	1
1494	17 hours, 41 minutes	20 hours, 18 minutes*	25
1495	17 hours, 41 minutes	17 hours, 41 minutes	32
1496	18 hours, 42 minutes	19 hours, 1 minute*	2,701
1497	1 day, 13 hours, 52 minutes	1 day, 13 hours, 52 minutes	1
1498	1 day, 19 hours, 24 minutes	1 day, 19 hours, 24 minutes	2
1499	21 hours, 19 minutes	21 hours, 19 minutes	1
1500	19 hours, 14 minutes	19 hours, 14 minutes	23
1501	19 hours, 14 minutes	20 hours, 42 minutes*	1,325
1502	22 hours, 47 minutes	22 hours, 47 minutes	1
1503	22 hours, 47 minutes	22 hours, 47 minutes	1
1504	1 day, 12 hours, 41 minutes	2 days, 13 hours, 27 minutes*	386
1505	12 hours, 40 minutes	12 hours, 40 minutes	22
1506	12 hours, 40 minutes	12 hours, 40 minutes	15
1507	12 hours, 40 minutes	12 hours, 41 minutes	247
1508	13 hours, 52 minutes	13 hours, 52 minutes	12
1509	1 day, 30 minutes	1 day, 30 minutes	2
1510	1 day, 18 hours, 20 minutes	1 day, 18 hours, 20 minutes	37
1511	17 hours, 48 minutes	17 hours, 48 minutes	34
1512	17 hours, 48 minutes	17 hours, 48 minutes	1
1513	1 day, 6 hours, 57 minutes	1 day, 6 hours, 57 minutes	1
1514	1 day, 6 hours, 57 minutes	1 day, 6 hours, 57 minutes	51
1515	23 hours, 3 minutes	23 hours, 3 minutes	168
1516	1 day, 3 hours, 15 minutes	1 day, 3 hours, 15 minutes	1
1517	18 hours, 16 minutes	18 hours, 16 minutes	365
1518	15 hours, 17 minutes	15 hours, 17 minutes	69
1519	1 day, 9 hours, 3 minutes	1 day, 9 hours, 3 minutes	14

Interruption	First Restoration After 12 Hours	Final Restoration After 12 Hours	Customers interrupted
1520	2 days, 6 hours, 5 minutes	2 days, 6 hours, 5 minutes	9
1521	1 day, 7 hours, 34 minutes	1 day, 7 hours, 34 minutes	21
1522	1 day, 2 hours, 56 minutes	5 days, 18 hours, 40 minutes*	5
1523	17 hours, 21 minutes	1 day, 2 hours, 32 minutes*	51
1524	1 day, 8 hours, 15 minutes	1 day, 8 hours, 15 minutes	1
1525	1 day, 8 hours, 15 minutes	1 day, 8 hours, 15 minutes	8
1526	18 hours, 27 minutes	18 hours, 27 minutes	9
1527	18 hours, 27 minutes	18 hours, 38 minutes*	680
1528	20 hours, 47 minutes	20 hours, 47 minutes	137
1529	1 day, 15 hours, 41 minutes	1 day, 15 hours, 41 minutes	1
1530	16 hours, 25 minutes	16 hours, 25 minutes	1
1531	12 hours, 11 minutes	12 hours, 11 minutes	3
1532	1 day, 6 hours, 7 minutes	1 day, 6 hours, 8 minutes*	1,842
1533	1 day, 14 hours, 30 minutes	1 day, 19 hours, 13 minutes*	96
1534	1 day, 34 minutes	1 day, 34 minutes	1
1535	1 day, 16 minutes	1 day, 16 minutes	1
1536	1 day, 19 hours, 42 minutes	1 day, 19 hours, 42 minutes	26
1537	14 hours, 30 minutes	14 hours, 30 minutes	5
1538	14 hours, 30 minutes	14 hours, 30 minutes	5
1539	2 days, 4 hours, 7 minutes	2 days, 4 hours, 7 minutes	1
1540	1 day, 17 hours, 50 minutes	1 day, 17 hours, 50 minutes	1
1541	1 day, 22 minutes	1 day, 22 minutes	1
1542	1 day, 22 minutes	1 day, 22 minutes	51
1543	12 hours, 42 minutes	12 hours, 42 minutes	1
1544	12 hours, 42 minutes	12 hours, 42 minutes	65
1545	1 day, 5 hours, 41 minutes	1 day, 5 hours, 41 minutes	140
1546	1 day, 36 minutes	1 day, 36 minutes	1
1547	2 days, 3 hours, 21 minutes	2 days, 3 hours, 21 minutes	1
1548	1 day, 15 hours, 12 minutes	1 day, 23 hours, 53 minutes*	32
1549	1 day, 10 hours, 22 minutes	1 day, 10 hours, 22 minutes	1
1550	1 day, 2 hours, 10 minutes	1 day, 2 hours, 10 minutes	1
1551	1 day, 23 hours, 22 minutes	3 days, 39 minutes*	11
1552	1 day, 15 hours, 55 minutes	1 day, 15 hours, 55 minutes	7
1553	18 hours, 47 minutes	18 hours, 47 minutes	7
1554	18 hours, 47 minutes	18 hours, 47 minutes	1
1555	1 day, 5 hours, 18 minutes	1 day, 5 hours, 18 minutes	1
1556	3 days, 5 hours, 47 minutes	3 days, 5 hours, 47 minutes	2
1557	13 hours, 31 minutes	13 hours, 31 minutes	1
1558	1 day, 2 hours, 6 minutes	1 day, 2 hours, 6 minutes	1
1559	1 day, 1 hour, 26 minutes	1 day, 1 hour, 26 minutes	1
1560	19 hours, 22 minutes	1 day, 23 hours, 18 minutes*	62
1561	3 days, 6 hours, 29 minutes	3 days, 6 hours, 29 minutes	1
1562	23 hours, 7 minutes	23 hours, 7 minutes	1
1563	23 hours, 49 minutes	23 hours, 49 minutes	24
1564	16 hours, 58 minutes	16 hours, 58 minutes	5

Interruption	First Restoration After 12 Hours	Final Restoration After 12 Hours	Customers interrupted
1565	16 hours, 58 minutes	16 hours, 58 minutes	1
1566	16 hours, 58 minutes	22 hours, 34 minutes*	13
1567	23 hours, 16 minutes	23 hours, 16 minutes	13
1568	16 hours, 45 minutes	16 hours, 45 minutes	35
1569	16 hours, 45 minutes	16 hours, 45 minutes	1
1570	1 day, 5 hours, 16 minutes	1 day, 6 hours, 5 minutes*	115
1571	1 day, 2 hours, 16 minutes	1 day, 2 hours, 16 minutes	20
1572	2 days, 3 hours, 48 minutes	2 days, 3 hours, 48 minutes	1
1573	1 day, 3 hours, 14 minutes	1 day, 4 hours, 3 minutes*	58
1574	1 day, 3 hours, 14 minutes	1 day, 3 hours, 14 minutes	1
1575	1 day, 5 hours, 49 minutes	1 day, 5 hours, 49 minutes	1
1576	1 day, 3 hours, 55 minutes	1 day, 3 hours, 55 minutes	1
1577	1 day, 4 hours, 6 minutes	1 day, 4 hours, 6 minutes	1
1578	1 day, 4 hours, 6 minutes	1 day, 4 hours, 6 minutes	1
1579	1 day, 21 hours, 17 minutes	1 day, 21 hours, 17 minutes	1
1580	1 day, 5 hours, 50 minutes	1 day, 5 hours, 50 minutes	1
1581	1 day, 1 hour, 14 minutes	1 day, 23 hours, 27 minutes*	21
1582	22 hours, 31 minutes	22 hours, 31 minutes	12
1583	21 hours, 23 minutes	21 hours, 23 minutes	1
1584	21 hours, 23 minutes	21 hours, 58 minutes	28
1585	21 hours, 33 minutes	21 hours, 33 minutes	32
1586	1 day, 3 hours, 34 minutes	1 day, 3 hours, 34 minutes	1
1587	12 hours, 25 minutes	12 hours, 25 minutes	1
1588	1 day, 3 hours, 41 minutes	1 day, 3 hours, 41 minutes	1
1589	13 hours, 2 minutes	13 hours, 2 minutes	106
1590	1 day, 2 hours, 19 minutes	1 day, 2 hours, 19 minutes	17
1591	1 day, 2 hours, 19 minutes	1 day, 2 hours, 19 minutes	9
1592	16 hours, 57 minutes	16 hours, 57 minutes	165
1593	16 hours, 57 minutes	16 hours, 57 minutes	188
1594	13 hours, 18 minutes	13 hours, 18 minutes	3
1595	13 hours, 18 minutes	13 hours, 18 minutes	1
1596	20 hours, 52 minutes	20 hours, 52 minutes	103
1597	14 hours, 15 minutes	14 hours, 15 minutes	106
1598	2 days, 20 minutes	2 days, 20 minutes	2
1599	17 hours, 13 minutes	17 hours, 13 minutes	1
1600	2 days, 6 hours, 24 minutes	2 days, 6 hours, 24 minutes	1
1601	22 hours, 19 minutes	22 hours, 19 minutes	1
1602	22 hours, 19 minutes	22 hours, 19 minutes	1
1603	1 day, 7 hours, 33 minutes	1 day, 7 hours, 33 minutes	5
1604	13 hours, 50 minutes	13 hours, 50 minutes	2
1605	13 hours, 50 minutes	13 hours, 50 minutes	86
1606	13 hours, 50 minutes	13 hours, 50 minutes	1
1607	15 hours, 53 minutes	15 hours, 53 minutes	1
1608	14 hours, 55 minutes	14 hours, 55 minutes	1
1609	14 hours, 55 minutes	17 hours, 26 minutes*	44

Interruption	First Restoration After 12 Hours	Final Restoration After 12 Hours	Customers interrupted
1610	14 hours, 55 minutes	14 hours, 55 minutes	1
1611	14 hours, 55 minutes	14 hours, 55 minutes	115
1612	14 hours, 55 minutes	14 hours, 55 minutes	174
1613	14 hours, 1 minute	14 hours, 1 minute	27
1614	14 hours, 1 minute	14 hours, 1 minute	1
1615	1 day, 7 hours, 3 minutes	1 day, 7 hours, 3 minutes	32
1616	14 hours, 9 minutes	14 hours, 9 minutes	10
1617	1 day, 8 hours, 25 minutes	1 day, 8 hours, 25 minutes	1
1618	21 hours, 5 minutes	21 hours, 5 minutes	12
1619	21 hours, 5 minutes	21 hours, 5 minutes	36
1620	1 day, 19 hours	1 day, 19 hours	1
1621	1 day, 19 hours	1 day, 19 hours	1
1622	21 hours, 13 minutes	21 hours, 28 minutes*	25
1623	1 day, 8 hours, 30 minutes	1 day, 8 hours, 30 minutes	12
1624	1 day, 7 hours, 42 minutes	1 day, 7 hours, 42 minutes	4
1625	2 days, 4 hours, 58 minutes	2 days, 4 hours, 58 minutes	10
1626	2 days, 4 hours, 40 minutes	2 days, 4 hours, 40 minutes	4
1627	22 hours, 6 minutes	22 hours, 6 minutes	1
1628	15 hours, 35 minutes	15 hours, 35 minutes	23
1629	1 day, 8 hours	1 day, 8 hours	221
1630	23 hours, 14 minutes	23 hours, 14 minutes	5
1631	1 day, 5 hours, 30 minutes	1 day, 5 hours, 30 minutes	49
1632	1 day, 6 hours, 9 minutes	1 day, 6 hours, 9 minutes	13
1633	20 hours, 5 minutes	20 hours, 5 minutes	1
1634	16 hours, 42 minutes	16 hours, 42 minutes	5
1635	1 day, 1 hour, 21 minutes	1 day, 1 hour, 21 minutes	1
1636	18 hours, 34 minutes	18 hours, 34 minutes	1
1637	18 hours, 34 minutes	1 day, 17 minutes*	720
1638	13 hours, 47 minutes	13 hours, 47 minutes	1
1639	22 hours, 17 minutes	22 hours, 17 minutes	18
1640	22 hours, 17 minutes	22 hours, 17 minutes	6
1641	13 hours, 39 minutes	13 hours, 39 minutes	1
1642	13 hours, 39 minutes	13 hours, 39 minutes	149
1643	17 hours, 54 minutes	1 day, 1 hour, 22 minutes*	28
1644	20 hours, 51 minutes	20 hours, 51 minutes	3
1645	18 hours, 39 minutes	18 hours, 39 minutes	1
1646	1 day, 7 hours, 29 minutes	1 day, 7 hours, 29 minutes	23
1647	20 hours, 19 minutes	1 day, 35 minutes*	12
1648	20 hours, 19 minutes	20 hours, 19 minutes	4
1649	19 hours, 56 minutes	19 hours, 56 minutes	1
1650	13 hours, 36 minutes	13 hours, 36 minutes	1
1651	13 hours, 36 minutes	13 hours, 36 minutes	7
1652	20 hours, 57 minutes	20 hours, 57 minutes	2
1653	20 hours, 57 minutes	20 hours, 57 minutes	78
1654	2 days, 12 hours, 50 minutes	2 days, 12 hours, 50 minutes	1

Interruption	First Restoration After 12 Hours	Final Restoration After 12 Hours	Customers interrupted
1655	3 days, 3 hours, 17 minutes	3 days, 3 hours, 17 minutes	1
1656	2 days, 11 hours, 41 minutes	2 days, 11 hours, 41 minutes	1
1657	1 day, 2 hours, 4 minutes	1 day, 2 hours, 4 minutes	1
1658	19 hours, 28 minutes	19 hours, 28 minutes	16
1659	19 hours, 28 minutes	19 hours, 28 minutes	4
1660	23 hours, 11 minutes	23 hours, 13 minutes*	7
1661	22 hours, 16 minutes	22 hours, 16 minutes	94
1662	21 hours, 7 minutes	1 day, 57 minutes*	15
1663	18 hours, 11 minutes	18 hours, 11 minutes	3
1664	14 hours, 46 minutes	14 hours, 46 minutes	1
1665	14 hours, 46 minutes	14 hours, 46 minutes	1
1666	12 hours, 9 minutes	12 hours, 9 minutes	4
1667	17 hours, 4 minutes	17 hours, 4 minutes	2
1668	17 hours, 4 minutes	17 hours, 4 minutes	1
1669	1 day, 16 hours, 53 minutes	1 day, 16 hours, 53 minutes	1
1670	23 hours, 24 minutes	23 hours, 24 minutes	3
1671	17 hours, 18 minutes	17 hours, 18 minutes	11
1672	17 hours, 18 minutes	17 hours, 18 minutes	1
1673	1 day, 55 minutes	1 day, 55 minutes	1
1674	1 day, 4 hours, 33 minutes	1 day, 4 hours, 33 minutes	23
1675	15 hours, 31 minutes	15 hours, 31 minutes	1
1676	3 days, 19 hours, 1 minute	3 days, 19 hours, 1 minute	1
1677	17 hours, 32 minutes	17 hours, 32 minutes	1
1678	14 hours, 11 minutes	14 hours, 11 minutes	1
1679	21 hours, 55 minutes	21 hours, 55 minutes	21
1680	21 hours, 22 minutes	21 hours, 22 minutes	1
1681	1 day, 2 hours, 8 minutes	1 day, 2 hours, 8 minutes	1
1682	1 day, 1 hour, 41 minutes	1 day, 1 hour, 41 minutes	9
1683	1 day, 1 hour, 41 minutes	1 day, 1 hour, 41 minutes	1
1684	19 hours, 1 minute	19 hours, 1 minute	1
1685	20 hours, 28 minutes	20 hours, 28 minutes	349
1686	1 day, 6 hours, 41 minutes	1 day, 6 hours, 41 minutes	1
1687	18 hours, 29 minutes	18 hours, 29 minutes	1
1688	1 day, 4 hours, 24 minutes	1 day, 4 hours, 24 minutes	1
1689	19 hours, 10 minutes	19 hours, 10 minutes	1
1690	19 hours, 10 minutes	19 hours, 10 minutes	22
1691	18 hours, 25 minutes	18 hours, 25 minutes	1
1692	18 hours, 25 minutes	18 hours, 25 minutes	1
1693	18 hours, 25 minutes	18 hours, 25 minutes	1
1694	1 day, 9 hours, 6 minutes	1 day, 9 hours, 6 minutes	121
1695	19 hours, 17 minutes	19 hours, 17 minutes	1
1696	1 day, 22 hours, 37 minutes	2 days, 5 hours, 11 minutes*	10
1697	22 hours, 13 minutes	1 day, 19 hours, 5 minutes*	42
1698	1 day, 2 hours, 18 minutes	1 day, 2 hours, 18 minutes	1
1699	14 hours, 47 minutes	14 hours, 47 minutes	47

Interruption	First Restoration After 12 Hours	Final Restoration After 12 Hours	Customers interrupted
1700	19 hours, 49 minutes	19 hours, 49 minutes	1
1701	1 day, 6 hours, 19 minutes	1 day, 6 hours, 19 minutes	1
1702	2 days, 2 hours, 39 minutes	2 days, 2 hours, 39 minutes	1
1703	18 hours, 28 minutes	18 hours, 28 minutes	1
1704	2 days, 6 hours, 12 minutes	2 days, 6 hours, 12 minutes	1
1705	22 hours, 45 minutes	23 hours*	4
1706	5 days, 1 hour, 59 minutes	5 days, 1 hour, 59 minutes	1
1707	13 hours, 14 minutes	13 hours, 14 minutes	1
1708	13 hours, 14 minutes	13 hours, 14 minutes	4
1709	19 hours, 33 minutes	19 hours, 33 minutes	1
1710	1 day, 1 hour, 38 minutes	1 day, 1 hour, 38 minutes	1
1711	5 days, 36 minutes	5 days, 36 minutes	1
1712	1 day, 2 hours, 21 minutes	1 day, 2 hours, 21 minutes	6
1713	22 hours, 3 minutes	22 hours, 3 minutes	448
1714	22 hours, 4 minutes	22 hours, 4 minutes	12
1715	6 days, 3 hours, 11 minutes	6 days, 3 hours, 11 minutes	1
1716	1 day, 57 minutes	1 day, 57 minutes	25
1717	1 day, 2 hours, 45 minutes	1 day, 2 hours, 45 minutes	6
1718	21 hours, 50 minutes	21 hours, 50 minutes	32
1719	18 hours, 48 minutes	18 hours, 48 minutes	1
1720	18 hours, 48 minutes	18 hours, 48 minutes	2
1721	12 hours, 49 minutes	12 hours, 49 minutes	1
1722	12 hours, 59 minutes	20 hours, 35 minutes*	36
1723	3 days, 22 hours, 50 minutes	3 days, 22 hours, 50 minutes	1
1724	21 hours, 30 minutes	21 hours, 30 minutes	1
1725	21 hours, 30 minutes	21 hours, 30 minutes	1
1726	13 hours, 16 minutes	13 hours, 16 minutes	8
1727	13 hours, 16 minutes	13 hours, 16 minutes	1
1728	20 hours, 1 minute	20 hours, 1 minute	7
1729	22 hours, 52 minutes	22 hours, 52 minutes	1
1730	13 hours, 46 minutes	13 hours, 46 minutes	1
1731	1 day, 3 hours, 35 minutes	1 day, 3 hours, 39 minutes*	184
1732	16 hours, 35 minutes	16 hours, 53 minutes*	1,199
1733	21 hours, 56 minutes	21 hours, 56 minutes	7
1734	22 hours, 24 minutes	22 hours, 24 minutes	5
1735	15 hours, 34 minutes	15 hours, 34 minutes	13
1736	14 hours, 31 minutes	14 hours, 31 minutes	11
1737	1 day, 7 hours, 1 minute	1 day, 7 hours, 1 minute	40
1738	18 hours, 36 minutes	18 hours, 36 minutes	1
1739	3 days, 7 hours, 21 minutes	3 days, 7 hours, 21 minutes	1
1740	2 days, 1 hour, 55 minutes	2 days, 1 hour, 55 minutes	1
1741	23 hours, 57 minutes	23 hours, 57 minutes	409
1742	23 hours, 57 minutes	23 hours, 57 minutes	1
1743	23 hours, 47 minutes	23 hours, 47 minutes	13
1744	4 days, 20 hours, 49 minutes	4 days, 20 hours, 49 minutes	1

Interruption	First Restoration After 12 Hours	Final Restoration After 12 Hours	Customers interrupted
1745	17 hours, 29 minutes	17 hours, 29 minutes	143
1746	0 day, 2 hours	1 day, 2 hours	1
1747	19 hours, 54 minutes	19 hours, 54 minutes	23
1748	13 hours, 41 minutes	13 hours, 41 minutes	1
1749	20 hours, 26 minutes	20 hours, 42 minutes*	330
1750	1 day, 9 hours, 22 minutes	1 day, 9 hours, 22 minutes	6
1751	1 day, 23 hours, 41 minutes	1 day, 23 hours, 41 minutes	2
1752	2 days, 22 hours, 26 minutes	2 days, 22 hours, 26 minutes	1
1753	18 hours, 10 minutes	18 hours, 10 minutes	1
1754	14 hours, 8 minutes	14 hours, 8 minutes	97
1755	1 day, 6 hours, 30 minutes	1 day, 6 hours, 30 minutes	1
1756	1 day, 3 hours, 51 minutes	1 day, 3 hours, 51 minutes	1
1757	1 day, 1 hour, 23 minutes	1 day, 1 hour, 23 minutes	1
1758	23 hours, 6 minutes	23 hours, 6 minutes	1
1759	12 hours, 17 minutes	12 hours, 17 minutes	1
1760	12 hours, 14 minutes	12 hours, 14 minutes	1
1761	1 day, 22 hours	1 day, 22 hours	1
1762	14 hours, 58 minutes	14 hours, 58 minutes	1
1763	16 hours, 18 minutes	16 hours, 18 minutes	1
1764	1 day, 13 hours, 5 minutes	1 day, 13 hours, 5 minutes	1
1765	1 day, 2 hours, 41 minutes	1 day, 2 hours, 41 minutes	2
1766	1 day, 13 hours, 21 minutes	1 day, 13 hours, 21 minutes	1
1767	1 day, 9 hours, 10 minutes	1 day, 9 hours, 10 minutes	1
1768	1 day, 18 hours, 56 minutes	1 day, 18 hours, 56 minutes	1
1769	12 hours, 44 minutes	12 hours, 44 minutes	1
1770	1 day, 2 hours, 9 minutes	1 day, 2 hours, 9 minutes	1
1771	2 days, 2 hours, 19 minutes	2 days, 2 hours, 19 minutes	1
1772	1 day, 21 hours, 40 minutes	1 day, 21 hours, 40 minutes	1
1773	1 day, 17 hours, 57 minutes	1 day, 17 hours, 57 minutes	1,840
1774	2 days, 2 hours, 11 minutes	2 days, 2 hours, 11 minutes	1