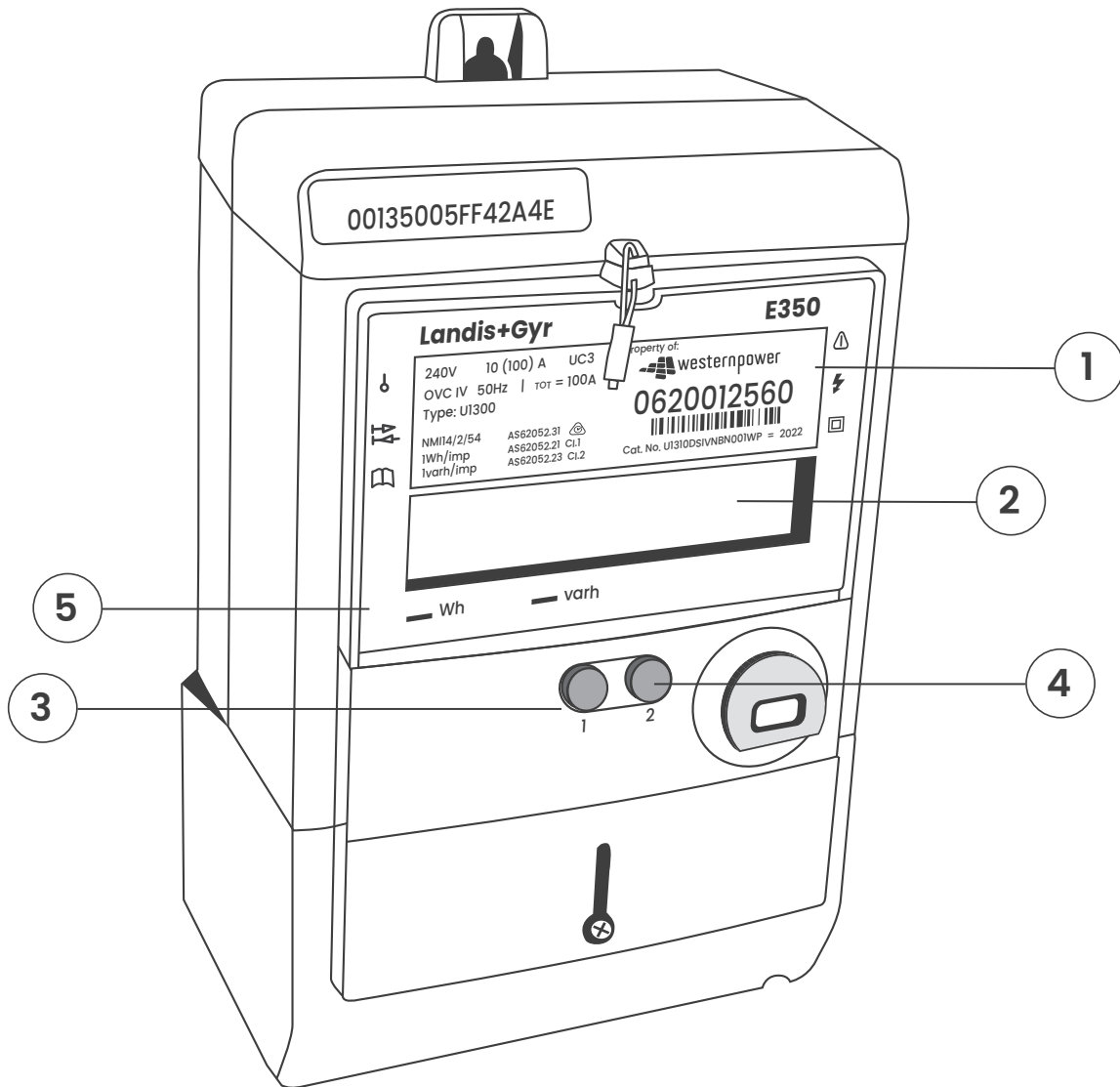


How to read your single-Phase Meter

For Meter Codes 0301, 0333 0349, 0510, 0520, 0620 and 0633



- 1 Meter number** – This is a number unique to this meter, if you have an outage or we need to quickly identify your property, this is the best number to use. The first four digits also identify the model of the meter
- 2 LCD display** – Displays a cycle of information, primarily the current accumulated usage by this meter.
- 3 Alt button** – Press and hold this button for two seconds to access the alternate channels you determine if the fault is with the network or within your own property.
- 4 ARM breaker reconnect/boost button** – Used to reconnect a disconnected meter once it has been remotely armed. Please see Page 5 for full instructions or watch the video [HERE](#)

Boost – See page 4 for more about this feature
- 5 Pulse Indicators** – These lights pulse on & off when electricity is being consumed; pulses get faster as electricity consumed increases.

How to read your single-Phase Meter

For Meter Codes 0301, 0333 0349, 0510, 0520, 0620 and 0633

The display will rotate through the programmed channels. Pressing the Scroll/Display Cycle button will shift the display to the alternate channels. On this meter channel IDs are not displayed, however there is a scheme of prefixes to identify the channels:



The channels available on your digital meter are determined by the tariff you selected for your electricity account.

The information on your meter is not appropriate for customer identification or diagnosis of electrical problems – always refer any electrical work in your home to an electrician, and report power outages, electric shocks or electrical hazards to Western Power.

Standard channel list

Normal Display List		
Scroll Time [Secs] 5		
Display ID	Channel name	Description
88	Display Test	All LED segments are turned on
4	Time(hh:mm)	The current time
5	Date	The current date
7	kWh Imported Total	The total import of electricity (consumption)
10	kWh Imported Total Current Rate A	The total import of electricity (consumption) at rate A
20	kWh Imported Total Current Rate C	The total import of electricity (consumption) at rate C
30	kWh Imported Total Current Rate B	The total import of electricity (consumption) at rate B
40	kWh Imported Total Current Rate D	The total import of electricity (consumption) at rate D
99	Error	Meter error encountered

How to read your single-Phase Meter

For Meter Codes 0301, 0333 0349, 0510, 0520, 0620 and 0633

Standard Channel list

Alternative 1 Display List		
Scroll Time [Secs] 5		
Display ID	Channel name	Description
15	KW Import Rate A	
25	KW Import Rate C	
42	Firmware Revision	Software version installed on the meter
47/107	kWh Exported Total	The total export of electricity across all rates (generation)
50	kWh Exported Total Total Current Rate A	The total export of electricity at rate A
60	kWh Exported Total Total Current Rate C	The total export of electricity at rate C
71	kWh Exported Total Total Current Rate B	The total export of electricity at rate B
71	Voltage / Voltage Phase A	Voltage on Phase A (or just voltage in a single phase connection)
72	Voltage Phase B	Voltage on Phase B
73	Voltage Phase C	Voltage on Phase C
98	Firmware Revision	Software version installed on the meter
93	Power Factor Total	A measure of the efficiency of your installation. Reads somewhere between 0 and 1 (i.e. 0.9) and can be affected by devices that build up but not necessarily "use" power, e.g. capacitors or inductors.
88	Display Test	All LED segments are turned on

How to read your single-Phase Meter

For Meter Codes 0301, 0333 0349, 0510, 0520, 0620 and 0633

Standard Channel list

Alternative 2 Display List		
Scroll Time [Secs] 6		
Display ID	Channel name	Description
1	Serial No First 7	Meter serial number first 7 digits
2	Serial No Mid 7	Meter serial number remaining digits
3	Program File ID	ID of the current program installed on the meter
9	Number of Demand Resets	
51	Voltage / Voltage Phase A	Voltage on Phase A (or just voltage in a single phase connection)
52	Voltage Phase B	Voltage on Phase B
53	Voltage Phase C	Voltage on Phase C
59	Power Factor Total	A measure of the efficiency of your installation. Reads somewhere between 0 and 1 (i.e. 0.9) and can be affected by devices that build up but not necessarily "use" power, e.g. capacitors or inductors.
61	Amps Phase A	Current (in Amps) on Phase A
62	Amps Phase B	Current (in Amps) on Phase B
63	Amps Phase C	Current (in Amps) on Phase C
74	Program File Version	Version number of the current program installed on the meter
77	Current rate	
78	Current Season	
172	Number of Power Outages	How many times the meter has lost power from the the network
173	Duration of all outages	Accumulated time meter has been without power
174	Start Time of Last Outage	Start Time of Last Outage
175	Start Date of Last Outage	Start Date of Last Outage
177	Current time of use Rate	
99	RSSI Inst / Error	Meter error encountered
88	Display Test	All LED segments are turned on
0	Flagged Warnings	Connection quality and safety warnings

How to read your single-Phase Meter

For Meter Codes 0301, 0333 0349, 0510, 0520, 0620 and 0633

Boost feature

This function is only available to those on tariffs specifically enabling off peak power to their hot water boiler. – You will need to contact your retailer to confirm if this feature is enabled.

The Meter Boost Button, also referred to as “hot water Boost button” allows you to immediately begin heating your water, rather than waiting for off peak hours.

Press and hold the “boost” button while watching the meter display for confirmation that the boost function has been enabled.

How to read your single-Phase Meter

For Meter Codes 0301, 0333 0349, 0510, 0520, 0620 and 0633

Completing remote reconnection

As well as being able to send electrical safety metrics and consumption data, AMI meters can be triggered remotely to disconnect/reconnect the property. As a safety precaution, reconnection must be performed at the meter by pressing and holding the ARM breaker reconnect button.

Once a retailer requests the meter be reconnected a signal is sent to “arm” the meter for reconnection.

Before reconnecting your meter, please check that appliances are turned off inside the house.

Video instructions are available [HERE](#):

1. If the meter is disconnected and not ready to reconnect it shows the current readings above the word “disconnected”.



2. If the meter is armed and ready to reconnect it will be scrolling through the words, “PrESS btn2 to ConnEct” (If you press the button before the meter is armed, it will only trigger the Boost function):



3. The customer should push and hold button 2 (the right hand one) – the display will count down COn3-COn1 and then the meter will click as the circuit breaker re-engages and the property is connected:



4. The display will update to show the word “connected” indicating the circuit breaker is now closed and the property has power:

