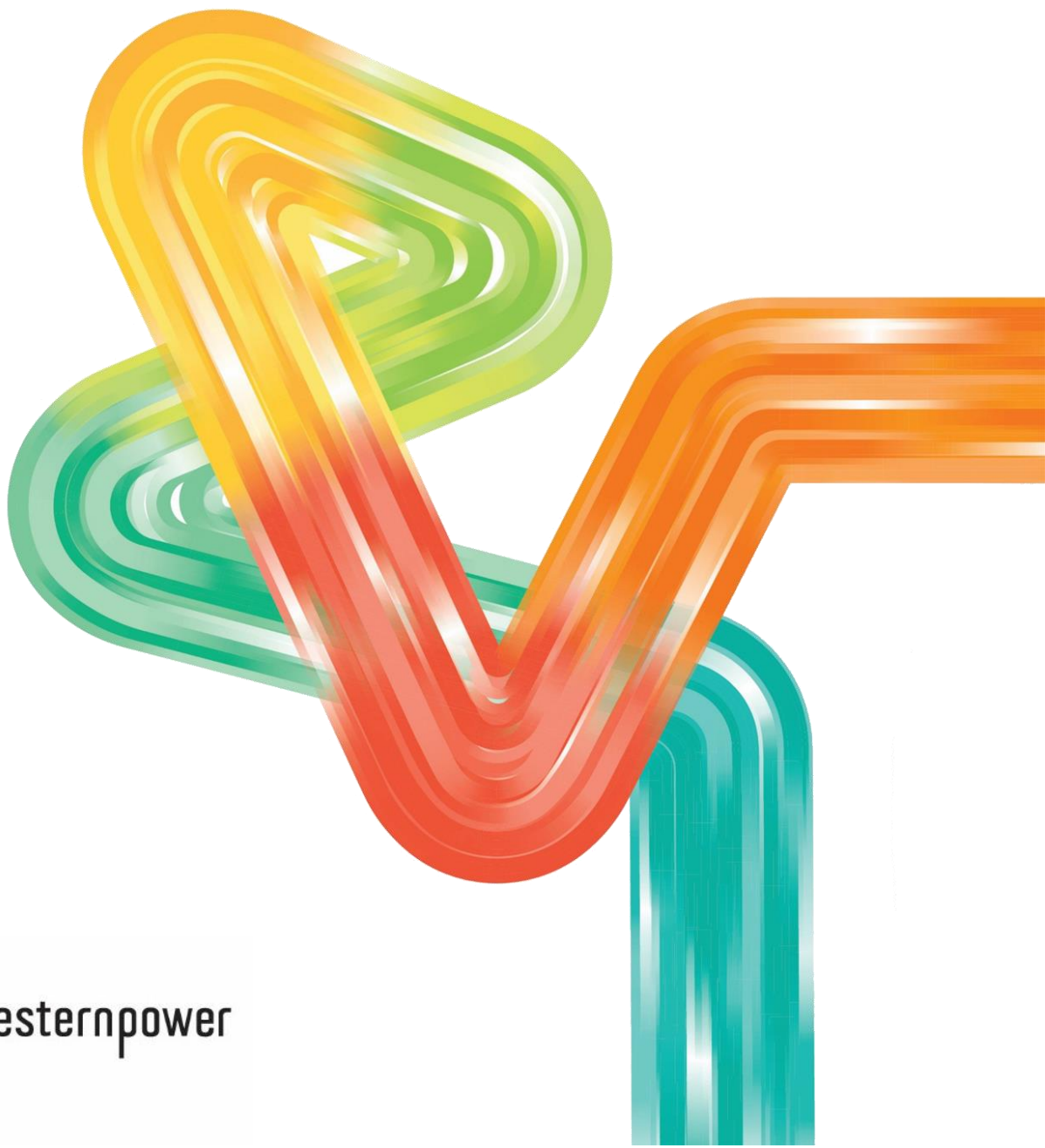


SPS Program – Environmental Management Plan

Lake Muir Decommissioning Project



Document version history

Version	Date	Amendment
1	26/04/2022	Initial version (EMD 57631624)
2	26/02/2025	Revision 1 – Inclusion of Lake Muir (Doc ID ID98-750882832-29922)
3	16/05/2025	Revision 2 – Minor change to introduction section.

Environmental Management Plan

Introduction:

This Environmental Management Plan (EMP) outlines how the environmental risks and impacts of activities related to the Standalone Power System (SPS) Program will be managed. The SPS Program is part of Western Power's broader grid transformation initiative. As WA is home to one of the largest island grids in the world, delivering electricity across such a vast network can be challenging. Some customers rely on long stretches of powerlines which can easily be affected by environmental factors, so power is not always reliable and maintaining these lines can be costly.

With advancements in technology and by removing the need for overhead lines and their associated costs, SPS offers a viable alternative to traditional poles and wires.

The program identifies and targets aging distribution lines that require significant investment to maintain. Where SPS is deemed the most suitable solution to ensure continued electricity supply, those sections of the network are earmarked for conversion. The program progresses in rounds, with each round targeting a number of overhead powerline assets for mass conversion. Following conversion of all active customer connections to SPS on the targeted spur, Western Power then plans the decommissioning of the overhead asset.

Scope of the Project Activities:

The decommissioning works include removal of all poles, reinforcing, insulators, conductors and other associated hardware. Similarly planned on a per year/round basis, whereby all assets now redundant as a result of SPS conversion in that year/round are planned for decommissioning.

This program involves the decommissioning of eight asset lines within the area impacted by cyclone Seroja and 18 asset lines associated with the pilot and round 1 sites that have been made redundant by the implementation of the new SPS sites.

Scope of the Environmental Management Plan:

The EMP highlights the project management issues and provides actions required to be undertaken before, during and following project completion. The aim of the EMP is to provide management actions to avoid, mitigate and/or manage the environmental impacts, to allocate areas of responsibility required for the implementation of management actions identified and to provide timeframes for completion and monitoring actions.

Non Compliance:

All non-compliances related to this EMP will follow Western Power's incident management procedure and will be logged in Guardian. An incident report shall be completed and submitted to WP within 10 days detailing all subsequent corrective actions.

Lake Muir Project:

This EMP applies to the SPS Round 1 Decommissioning – Lake Muir project. This project involves the removal of 12 km of distribution lines around the Lake Muir area.

A total of 3.48 ha of temporary clearing is required for the project. Clearing is confined to a 12.90 ha clearing envelope, as shown on Figure 1.

Environmental Management Plan				
Project Component	Management Action	Evidence Action completed	Responsible Person	Completion Timeframe
Standard Actions				
Aboriginal Heritage	If any Aboriginal sites or artefacts are discovered during the works, ensure work ceases immediately in the vicinity and notify supervisor to alert the relevant authorities.	Records to be captured in EDM.	Site Supervisor	During construction
	If suspected skeletal remains are found works shall cease and the incident reported immediately to the WA Police and DPLH. Works will not resume in the area until the relevant authorities advise works can recommence.	Incident reported	Site Supervisor	During construction
Access	No access outside of the designated access tracks or approved working areas is permitted by any vehicle, machinery or person.	Incident reported via Guardian	Site Supervisor	During construction
	Access to conservation estate requires notification to DBCA in accordance with WP and DBCA Protocol (EDM 31555062).	Records to be captured in EDM.	Site Supervisor	Prior to construction activities.
Biodiversity	Where possible avoid and limit the amount of clearing on site.	One compliance inspection will occur prior to clearing.	Site Supervisor	Prior to construction activities.
Clearing	At the pre-start meeting provide clear maps indicating the areas approved to be cleared to the crew undertaking the works	Record sheet to be signed at pre-start meeting by all personnel.	Site Supervisor	Prior to clearing commencing
	Opportunities to avoid or minimise vegetation clearing within the approved areas are to be considered.	Post-clearing shapefiles	Site Supervisor	Prior to clearing commencing
	Clearing of native vegetation cannot be conducted without an appointed Western Power SHE representative on site.	Guardian inspection from completed	SHE representative	Prior to and during clearing activities
	All access and laydown areas will be clearly delineated on plans.	Plans to be captured in EDM.	Site Supervisor	Prior to clearing commencing
	Have a copy (electronic or hard copy) of the EMP on site during the clearing activities	One compliance inspection will occur prior to clearing.	Site Supervisor	Once clearing has been completed

Environmental Management Plan				
Project Component	Management Action	Evidence Action completed	Responsible Person	Completion Timeframe
	Clearing of vegetation shall not exceed the limits of clearing.	One compliance inspection will occur prior to clearing. Representative photos will be taken.	Site Supervisor	Prior to clearing commencing
	Any vegetation cleared beyond the extent of approvals shall be reporting in accordance with the Western Power incident management procedure.	Clearing incident reported	Site Supervisor	Within 60 minutes of being identified
	Any vegetation cleared beyond the extent of approvals shall be rehabilitated to the pre-clearing condition.	Clearing incident reported	Site Supervisor	Within 24 months
	Retain the vegetative material and topsoil removed by mechanical machinery. Stockpiling only permitted on already cleared areas.	One compliance inspection will occur after clearing.	Site Supervisor	Once clearing has been completed
	Vegetative material and topsoil shall be respread over cleared areas once works have been completed.	One compliance inspection will occur after clearing. Representative photos will be taken.	Site Supervisor	Once clearing has been completed
Conservation Areas	Implement weed hygiene and control measures to prevent new weed infestations from occurring within the project area and the spread of existing weeds.	One compliance inspection will occur after clearing.	Site Supervisor	Once clearing has been completed
	Clean earth moving machinery of soil and vegetation prior to entry and exit to project areas adjacent to conservation areas.	Records to be captured in EDM.	Site Supervisor	Prior and during construction activities.
	Adhere to DBCA communications protocol.	Records to be captured in EDM.	Site Supervisor	Prior to clearing commencing

Environmental Management Plan				
Project Component	Management Action	Evidence Action completed	Responsible Person	Completion Timeframe
Contaminated sites	If contaminated soils are discovered during the construction process they will be reported in Guardian and corrective actions implemented.	Guardian report	Site Supervisor	During construction
Dust	<p>Construction activities must be planned and undertaken to minimise dust generation of dust resulting from adverse weather conditions including:</p> <ul style="list-style-type: none"> • Scheduling dust generation to avoid extreme wind • Modifying activities during windy weather to minimise dust generation • Implementing additional dust mitigation measures when dust-generating weather is forecast • Ceasing activities when dust-mitigation are ineffective • Minimising the area and duration of land disturbance activities 	Visual inspection daily. Records captured in EDM.	Site Supervisor	During construction
Erosion and sedimentation	If erosion and sedimentation become an issue control measures will need to be installed to ensure the hazard reverts to its pre-existing level.	One compliance inspection will occur after works completed.	Site Supervisor	Once clearing is completed
	Existing natural drainage paths and drainage channels will not be unnecessarily blocked or restricted. Any material that is found to block drainage will be removed.	One compliance inspection will occur after works completed.	Site Supervisor	During construction
	Any excavation must be filled with soil from within the surrounding approved work areas. Surface contours are to be reinstated to original condition following works.	One compliance inspection will occur after works completed.	Site Supervisor	During and post construction

Environmental Management Plan				
Project Component	Management Action	Evidence Action completed	Responsible Person	Completion Timeframe
Fauna	Clearing will progress slowly in one direction to ensure fauna has opportunity to move on.	One compliance inspection will occur prior to clearing.	Site Supervisor	Prior and during construction activities.
	In the event that sick, injured or orphaned native wildlife are located on the project site, the WILDCARE Helpline ((08) 9474 9055) will be contacted for assistance and an incident will be lodged in Guardian.	One compliance inspection will occur prior to clearing.	Site Supervisor	Prior and during construction activities.
	Feeding, disturbance, harassing of fauna or the presence of firearms or pets is prohibited on site.	One compliance inspection will occur prior to clearing.	Site Supervisor	Prior and during construction activities.
Fire	All vehicles must be fitted with fire-fighting equipment consistent with WP's Work Instruction.	Visual inspection at prestart.	Site Supervisor	During construction
	A fire Control and Communications Management Plan will be prepared prior to the start of construction activities.	Records to be captured in EDM.	Site Supervisor	Prior to construction activities
	Restricted and Prohibited Burning times must be complied with unless an exemption under the <i>Bush Fires Act 1954</i> has been obtained.	Records to be captured in EDM.	Site Supervisor	During construction
	Total Fire Ban days must be complied with unless a section 22C exemption under the <i>Bush Fires Act 1954</i> has been obtained by the contractor.	Records to be captured in EDM.	Site Supervisor	During construction
	Regular contact is to be kept between the Site Office and the local DBCA offices with regard to bushfire activity within and outside of the project area.	Records to be captured in EDM.	Site Supervisor	Prior to construction activities
Flora	Threatened/Priority flora to be avoided as far as practicable and the importance of protecting the species will be communicated to works crew.	One compliance inspection will occur prior to clearing.	Site Supervisor	Prior and during construction activities.

Environmental Management Plan				
Project Component	Management Action	Evidence Action completed	Responsible Person	Completion Timeframe
	Known Threatened and/or Priority flora species within the project area shall be demarcated on site by an Environmental Specialist prior to works commencing. The specialist will identify any other individuals in the area and flag these as required. Vehicle movements and decommissioning activities within population areas shall minimise vegetation and ground disturbance as much as possible.	One compliance inspection will occur prior to clearing.	Site Supervisor	Prior and during construction activities.
	No clearing of Threatened flora is permitted unless a Threatened Flora Authorisation (TFA) has been obtained. All TFA conditions will be adhered to.	One compliance inspection will occur after clearing. Records captured in EDM.	Site Supervisor	Prior and during construction activities.
	The sections of conductor between poles / structures shall be removed in a manner that avoids / minimises the impacts to the threatened/priority flora.	One compliance inspection will occur after clearing.	Site Supervisor	Prior and during construction activities.
Hazardous material	Hazardous materials identified during the course of construction will be transported and disposed of in accordance with EPA requirements.	Records captured in EDM.	Site Supervisor	During construction
	Chemicals and hazardous substances are not permitted to be stored within 100m of a waterbody.	One compliance inspection will occur prior to works commencing.	Site Supervisor	During construction
	All hydrocarbons and chemicals on site shall be stored in appropriate containers with adequate capacity to contain spills in accordance with relevant Australian Standards.	Visual inspection at prestart.	Site Supervisor	During construction

Environmental Management Plan				
Project Component	Management Action	Evidence Action completed	Responsible Person	Completion Timeframe
	No refuelling shall occur within 50m of any water body.	One compliance inspection will occur prior to works commencing.	Site Supervisor	During construction
	A spill kit shall be available at each active work site with all personnel on site aware of the location of the spill kit.	Visual inspection at prestart.	Site Supervisor	During construction
	Any spills must be immediately contained and reported to Western Power as per WP's incident reporting procedure.	Incident reported	Site Supervisor	During construction
	All hydrocarbon spills are to be removed from site and disposed of at an appropriate location. A report shall be prepared and submitted to WP detailing the site clean-up and waste disposal.	Report captured in EDM.	Site Supervisor	During construction
	The PM is responsible for gaining approval from the Department of Water for the use of any chemicals or potential contaminants within Public Drinking Water Source Area (PDWSA).	Records captured in EDM.	Site Supervisor	Prior to construction
	No hydrocarbon or other chemical storage, refuelling, transfer or mechanical work on vehicles is permitted within a Water Protection Reserve.	Visual inspection at prestart.	Site Supervisor	During construction
	Inspections shall be carried out daily on all vehicles, plant and equipment on site including checks for leaks of fuel, oil and other hydrocarbons. Problems shall be fixed immediately or the faulty equipment removed from site.	Visual inspection daily. Records captured in EDM.	Site Supervisor	During construction
	Any oil or chemical containers or tanks greater than minor quantities (i.e. individual items and combined items <500 L or kg) shall	Visual inspection at prestart.	Site Supervisor	During construction

Environmental Management Plan				
Project Component	Management Action	Evidence Action completed	Responsible Person	Completion Timeframe
	be contained on portable bunds or other temporary bunding (e.g. on heavy duty plastic or in sea containers) to ensure no spills/leaks are released to the immediate environment.			
	All oil and chemicals shall be stored at least 100 metres from any wet areas (e.g. wetlands, water courses) and away from drains	Visual inspection at prestart.	Site Supervisor	During construction
Noise	All project activities in areas with sensitive receptors will occur within standard construction hours (Monday to Saturday between 7am and 7pm) unless an out of hours Construction Noise approval is obtained.	One compliance inspection will occur prior to works commencing. Records captured in EDM.	Site Supervisor	During construction
	All construction equipment must be fitted with appropriate noise abatement devices and comply with relevant Australian Standards.	Visual inspection at prestart.	Site Supervisor	During construction
	Vehicles and machinery are to be monitored to ensure excessive noise is not generated during works. Vehicles and machinery identified as generating excessive noise are to be serviced offsite.	Inspection daily. Records captured in EDM.	Site Supervisor	During construction
Rehabilitation	Vegetation driven over will be left in situ to encourage regeneration and reduce soils erosion and weed incursion	One compliance inspection will occur after works completed.	Site Supervisor	During construction
	Surface contours are to be reinstated to original condition following works	One compliance inspection will occur after works completed.	Site Supervisor	During and post construction
Threatened Ecological Community (TEC)/Priority	TEC/PEC extent to be retained where possible and the importance of protecting these areas will be communicated to the crew during the pre-start	One compliance inspection will occur prior to clearing. Representative photos will be taken.	Site Supervisor	Prior to construction activities.

Environmental Management Plan				
Project Component	Management Action	Evidence Action completed	Responsible Person	Completion Timeframe
Ecological Community (PEC)				
Training	Conduct site induction training for all personnel to explain the requirements of the EMP and outline individuals' responsibilities.	Record sheet to be signed at pre-start meeting by all personnel.	Site Supervisor	Prior to construction commencing
UXO	Should unexploded ordnance (UXO) be found, work is to cease immediately and the following measures implemented: <ul style="list-style-type: none"> Do not touch or disturb it Notify the Site Supervisor immediately who must then notify the police Mark the location with high visibility tape or similar at a safe distance Ensure everyone on site is aware of the find and do not enter the marked off area 	Incident reported	Site Supervisor	During construction
Waste Management	All waste generated must be securely contained, removed and disposed offsite at an approved waste disposal facility.	One compliance inspection will occur after works completed.	Site Supervisor	During construction
	Any controlled waste created on site must be retained, securely stored and labelled in compliance with the <i>Environmental Protection (Controlled Waste) Regulations 2004</i> and collected then disposed of by a licensed controlled waste carrier.	Visual inspection at prestart.	Site Supervisor	During construction
	Treated poles and contaminated soils from around the poles shall be handled in accordance with WP's Works Instruction and disposed offsite at an approved waste disposal facility capable of handling such waste.	One compliance inspection will occur after works completed.	Site Supervisor	During construction

Environmental Management Plan				
Project Component	Management Action	Evidence Action completed	Responsible Person	Completion Timeframe
Water Management	No access to wet areas (rivers, creeks, wetlands, lakes) when wet such that vehicle tracks make furrows to the ground surface.	One compliance inspection will occur after works completed.	Site Supervisor	During construction
	Where disturbance cannot be avoided, surface contours to be reinstated to original condition following works.	One compliance inspection will occur after works completed.	Site Supervisor	Once clearing is completed
Weeds/Hygiene Management	All vehicles and machinery are to be clean on entry and clean on exit of areas to be cleared. The Vehicle hygiene inspection register (EDM56771439) must be filled out	Records captured in EDM.	Site Supervisor	Prior and during construction activities.
	The number of access points to the project shall be reduced as far as practicable.	One compliance inspection will occur prior to clearing.	Site Supervisor	Prior and during construction activities.
	Soils will only be moved in dry conditions, being when soils do not freely adhere to rubber tyres, tracks, vehicle chassis or wheel arches, unless an approved Dieback Management Plan is in place.	One compliance inspection will occur prior to clearing.	Site Supervisor	Prior and during construction activities.
	Ensure no dieback or weed affected soil, mulch, fill or other material is brought into the area to be cleared.	One compliance inspection will occur after clearing.	Site Supervisor	Prior and during construction activities.
	All vehicles must carry a biosecurity kit.	One compliance inspection will occur prior to clearing.	Site Supervisor	Prior and during construction activities.
Standard Record Keeping				
Record Keeping- Clearing	Record and maintain the following records for the cleared area: <ul style="list-style-type: none"> Location of clearing area as a shapefile Size of clearing Date on which clearing was done 	Clearing data via Section 5 and 6 of the internal WP clearing permit submitted to Environment team (Condition 15).	WP Project Owner	Data to be submitted to environment@westernpower.com.au within 30 days of project clearing activities being completed
	Copies of all Vehicle Environmental Inspection Registers used to check that clearing machinery is free of soil and vegetative material must be maintained	Clearing data via Section 5 and 6 of the internal WP clearing permit submitted	WP Project Owner	Data to be submitted to environment@westernpower.com.au within 30 days of project clearing activities being completed

Environmental Management Plan				
Project Component	Management Action	Evidence Action completed	Responsible Person	Completion Timeframe
		to Environment team (Condition 15).		

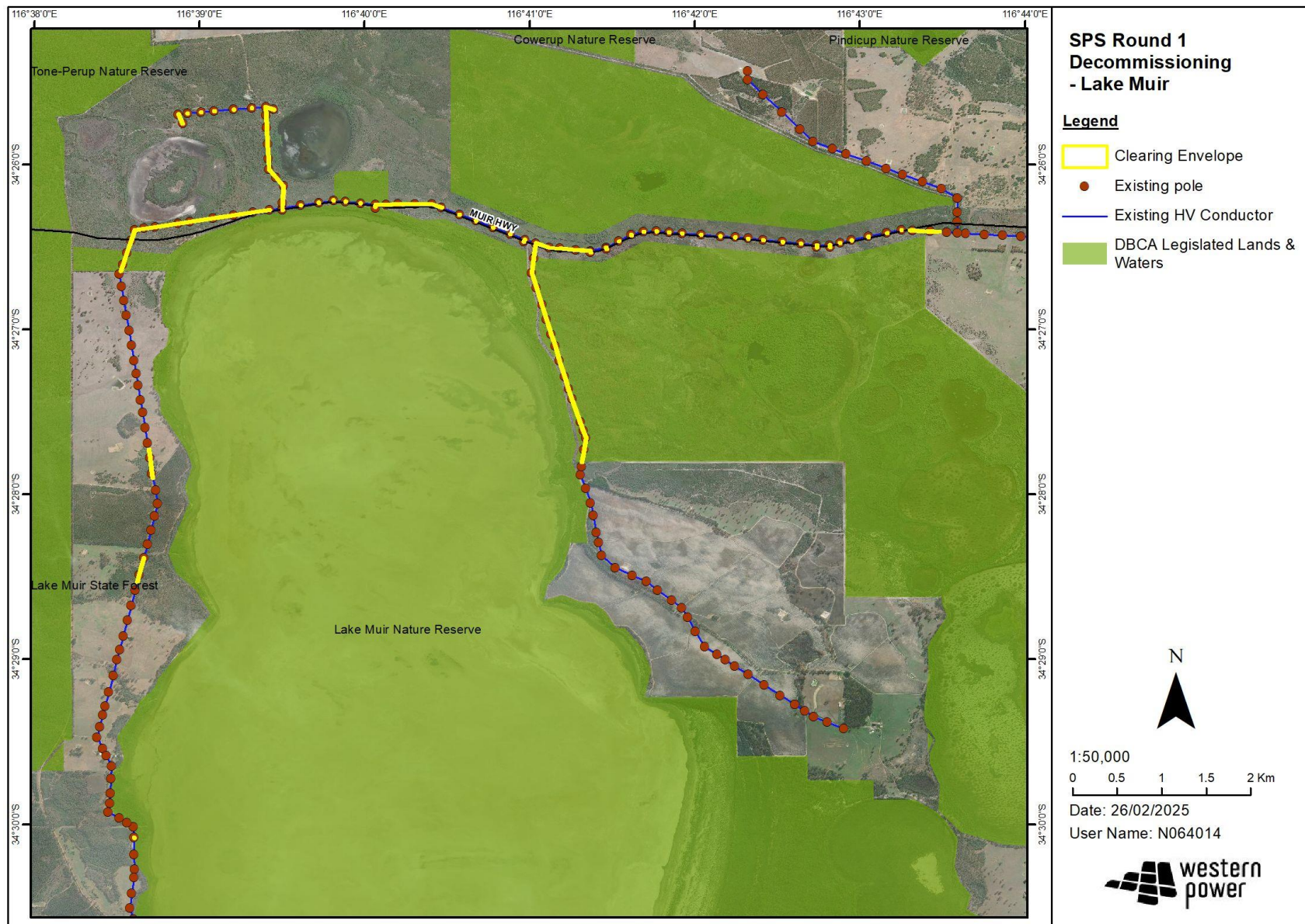


Figure 1 – Lake Muir Clearing Area