



Major Customer Connections

Insights Data

Project data quarterly update – June 2025



Summary

For our major customers with large-scale grid connection opportunities, this report will provide information on the following:

- Volume of project work being undertaken
- Average timeframes for each project phase
- Data relating to project type, industry, and region

New and improved major customer connection processes were implemented on July 1, 2024. Western Power anticipates reduced timelines between the project stages with these new processes. However, the data presented in this slide pack is based on historical averages and does not reflect the expected timeframes for the new projects. Until more data is available, these are historical views of customer and Western Power timelines.

- Inactive projects have been excluded from the report
- These data insights will be updated where appropriate and published each quarter.



Data Definitions

Project Phases

Enquiry - The Enquiry phase provides guidance on the information required to complete a Connection Application form. An Enquiry Assessment will assist you to identify a suitable network connection point and evaluate the feasibility of your project.

Initiation - The Project Initiation phase involves identifying network constraints applicable to your application, assessing if your application is competing for network capacity, and identifying viable options to modify the network to meet your requirements.

Scoping - The Project Scoping phase involves developing a scope of work for each option to modify the network, assessing each option, and selecting the final technical solution to be implemented.

Planning - The Project Planning phase involves Western Power preparing business cases, contracts, preliminary designs and estimates, and construction plans for the final technical solution to modify the network.

Construction & Commissioning - The required network modifications are then constructed and commissioned by Western Power under the terms of the Interconnection Works Contract (IWC).

Close out – Once constructed and commissioned, we can formally close out the project.

Other Definitions

Time in Each Stage – the number of calendar months in each stage defined as the time between the change from one stage to the next. (This includes the duration in a stage for a project that has passed that stage i.e. a project in Construction will have a days in stage for all preceding stages)

CMD – Contracted Maximum Demand (Load)

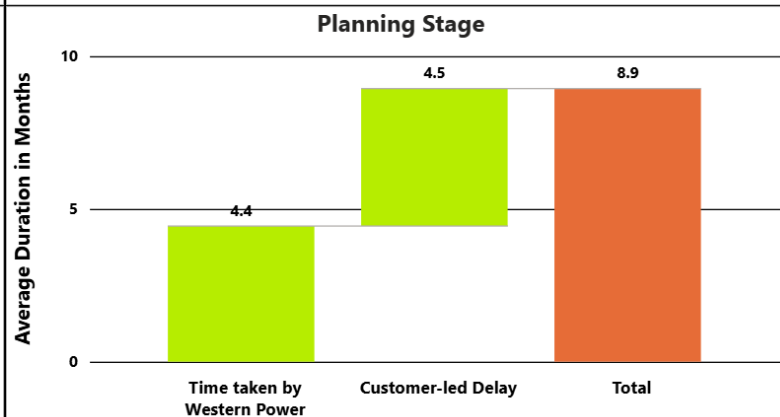
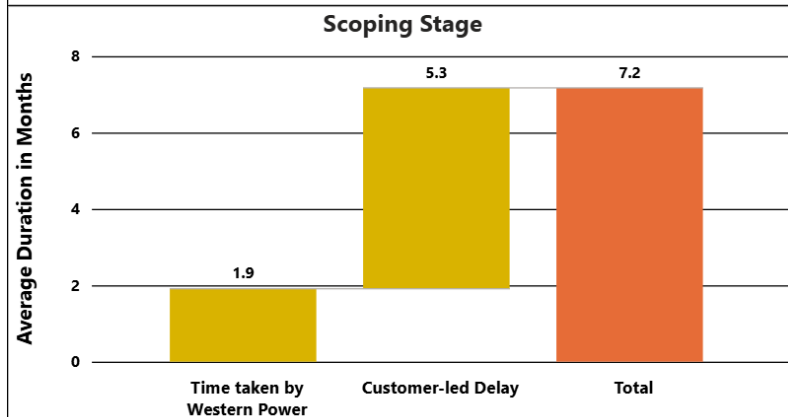
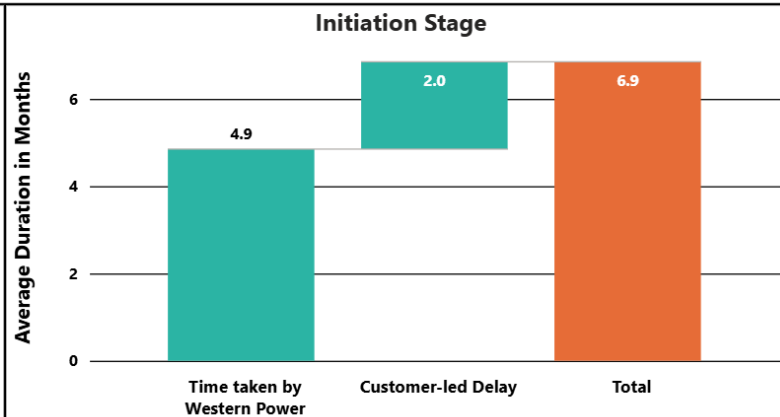
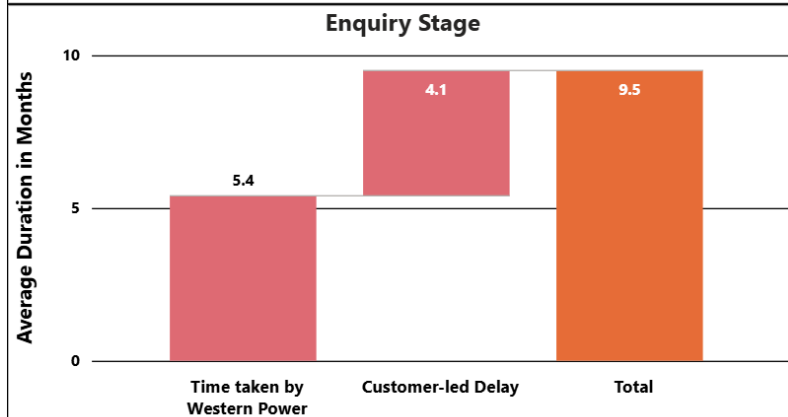
DSOC – Declared Send Out Capacity (Generation)

Access Offer - Form of contract developed under this applications and queuing policy which has been signed by Western Power and is in such a form that it can, without anything else being required, become an access contract when signed by an applicant.

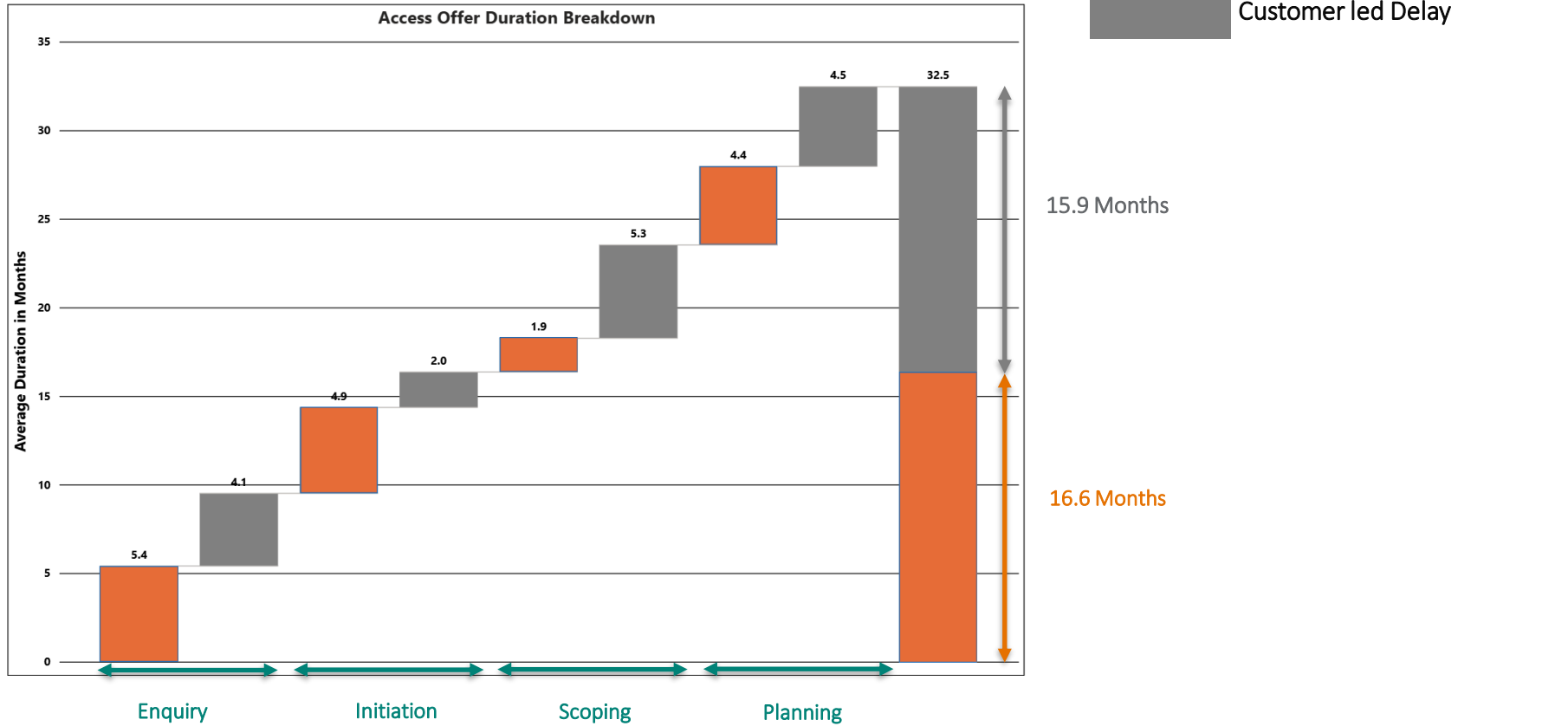


Time in Each Stage

Project Breakdown with Timeline



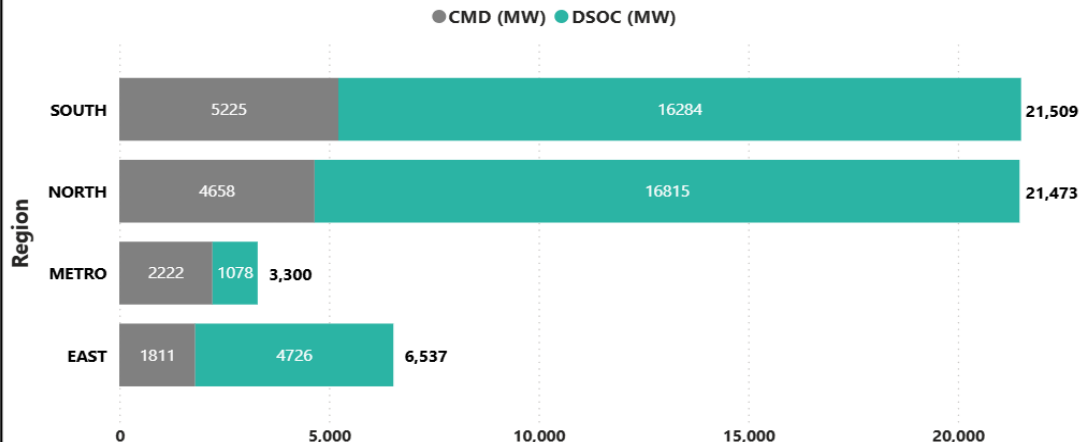
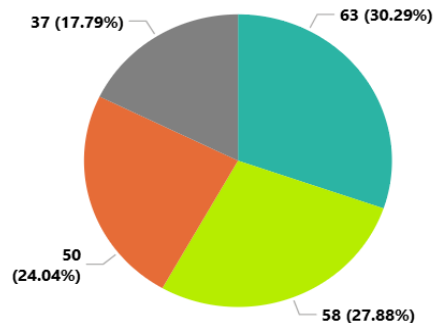
Access offer Duration



Project Distribution (Stage & Region)

Connection Type	BESS			Generator			Generator & BESS			Generator, Load & BESS			Load			Load & Generator			Total		
Active Stage	Projects	DSOC (MW)	CMD (MW)	Projects	DSOC (MW)	CMD (MW)	Projects	DSOC (MW)	CMD (MW)	Projects	DSOC (MW)	CMD (MW)	Projects	DSOC (MW)	CMD (MW)	Projects	DSOC (MW)	CMD (MW)	Projects	DSOC (MW)	CMD (MW)
1. Enquiry	13	3155	2655	45	18145	975	5	1453	1450	3	584	376	16	0	1430	3	660	671	85	23997	7557
2. Initiation	12	932	1076	20	7423	142	6	1956	1230	2	11	4	8	0	1230	4	905	401	52	11227	4083
3. Scoping	1	150	150	5	418	0							6	0	110	2	0	30	14	568	290
4. Planning	1	100	100	8	920	3							5	0	187	1	5	4	15	1025	294
5. Construction & Commissioning	6	1430	1430	11	342	62							13	0	183	3	45	7	33	1817	1682
6. Close Out				6	264	0							2	0	10	1	5	0	9	269	10
Total	33	5767	5411	95	27512	1182	11	3409	2680	5	595	380	50	0	3150	14	1620	1113	208	38903	13916

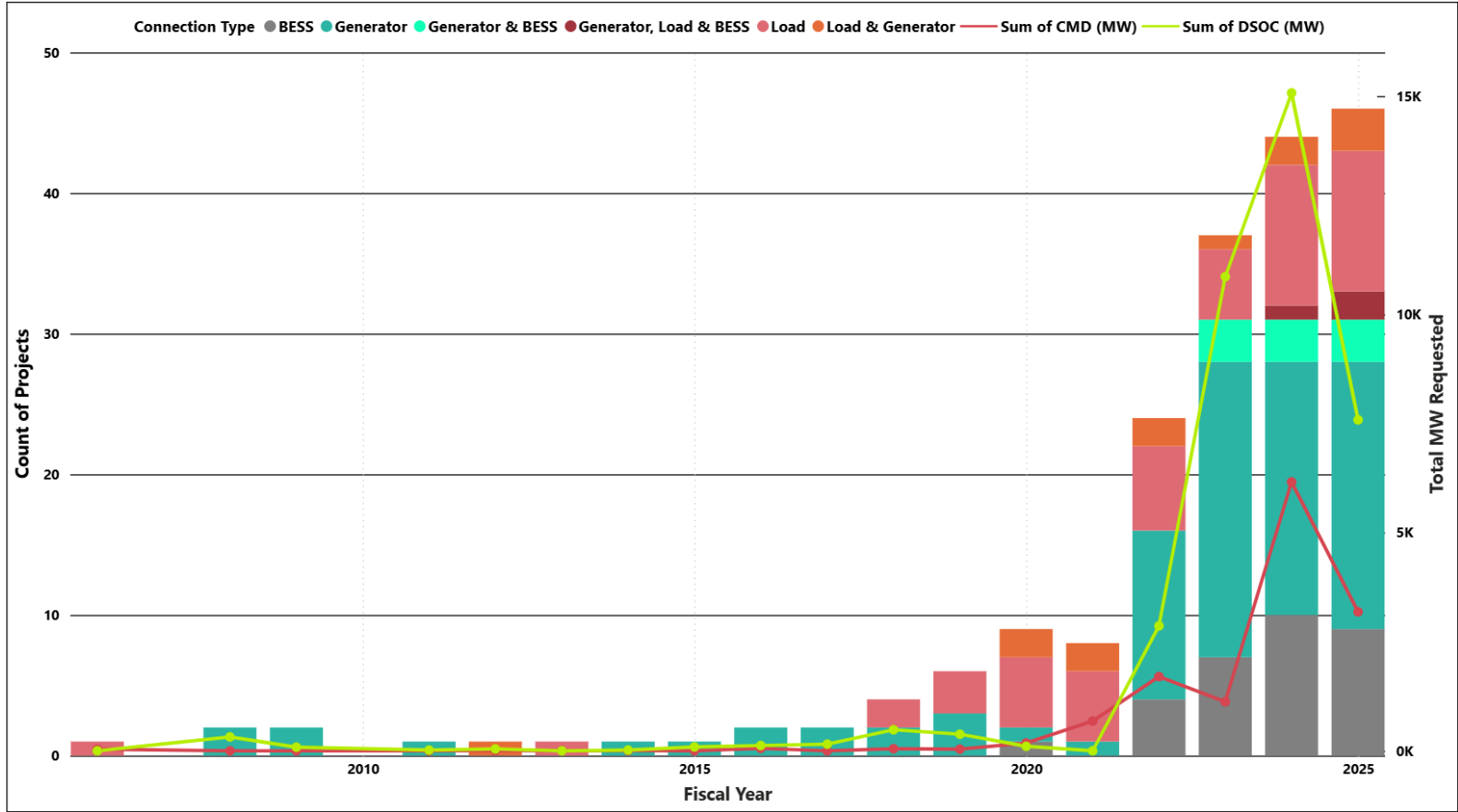
Projects by Region



Project Distribution (Industry)

Connection Type	Projects	DSOC (MW)	CMD (MW)	Connection Type	Projects	DSOC (MW)	CMD (MW)
▣ BESS	33	5767	5411	▣ Load	50	0	3150
Battery	33	5767	5411	Data Centre	3	0	771
▣ Generator	95	27512	1182	Generation - Other Renewable	1	0	9
Generation - Non-Renewable	16	1571	5	Government services	14	0	784
Generation - Other Renewable	8	641	4	Industrial Manufacturing	5	0	583
Generation - Solar Farm	11	847	133	Mining	18	0	882
Generation - Wind Farm	50	23824	1040	Retail Trade	1	0	4
Government services	1	2	0	Transport, postal and warehousing	7	0	105
Industrial Manufacturing	2	604	0	Utilities and waste services	1	0	12
Mining	3	17	0	▣ Load & Generator	14	1620	1113
Retail Trade	2	6	0	Generation - Non-Renewable	1	0	20
Transport, postal and warehousing	2	0	0	Generation - Other Renewable	5	150	108
▣ Generator & BESS	11	3409	2680	Generation - Solar Farm	3	900	400
Battery	4	1201	1190	Generation - Wind Farm	1	560	560
Generation - Other Renewable	1	3	0	Industrial Manufacturing	2	5	10
Generation - Solar Farm	4	1515	800	Mining	1	5	4
Generation - Wind Farm	2	690	690	Transport, postal and warehousing	1	0	11
▣ Generator, Load & BESS	5	595	380				
Generation - Other Renewable	2	1	0				
Generation - Wind Farm	1	324	324				
Mining	1	260	52				
Transport, postal and warehousing	1	10	4				

Enquiries Over Time



Quarterly Overview

New Enquiries	Access Offers Issued
21	4

New Connection Applications
4

Movements in this quarter

Stage Change	Project Count
Enquiry to Initiation	4
Initiation to Scoping	4
Scoping to Planning	2
Planning to Construction	1
Construction to Close Out	0