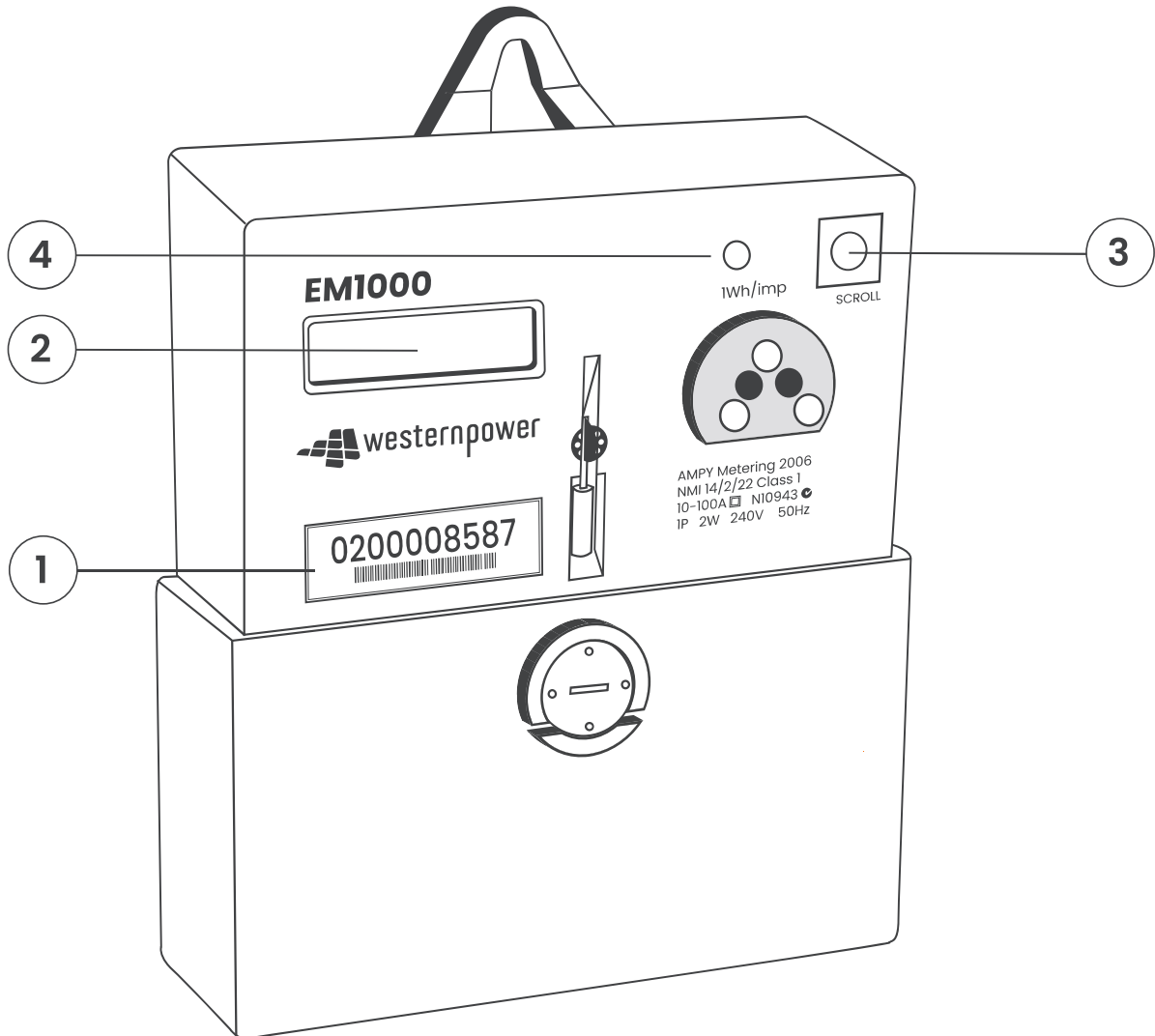


How to read your single-Phase Meter

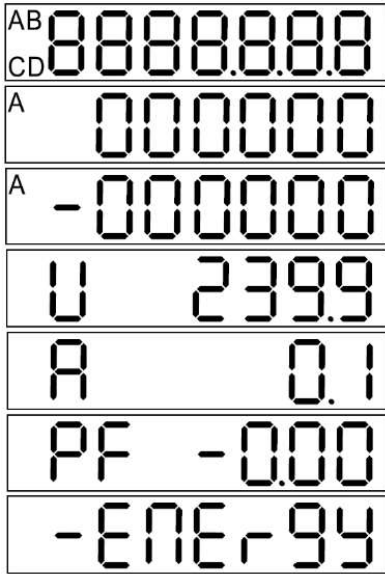
For Meter Codes 0158, 0181, 0200 and 0258



- 1 Meter number** – This is a number unique to this meter, if you have an outage or we need to quickly identify your property, this is the best number to use. The first four digits also identify the model of the meter
- 2 LCD display** – Displays a cycle of information, primarily the current accumulated usage by this meter.
- 3 Cycle/Scroll button** – Tap this button to scroll to the next channel.
- 4 Pulse Indicators** This light pulses on & off when electricity is being consumed; pulses get faster as electricity consumed increases.

How to read your single-Phase Meter

For Meter Codes 0158, 0181, 0200 and 0258



The display will rotate through the programmed channels. Pressing the Scroll/Display Cycle button will shift the display to the alternate channels. On this meter channel IDs are not displayed, however there is a scheme of prefixes to identify the channels:

Consumption and Generation Rates are identified by Letters A-D displayed in the left of the screen, Generation is identified by the minus (-) symbol

U – Voltage

A – Current (amps)

PF – Power Factor – A measure of the efficiency of your installation. Reads somewhere between 0 and 1 (i.e. 0.9) and can be affected by devices that build up but not necessarily “use” power, e.g. capacitors or inductors.

-ENERGY – Reverse energy detected (applies where meter is not configured for bi directional energy flow).

The channels available on your digital meter are determined by the tariff you selected for your electricity account.

The information on your meter is not appropriate for customer identification or diagnosis of electrical problems – always refer any electrical work in your home to an electrician, and report power outages, electric shocks or electrical hazards to Western Power.

Standard channel list

Normal Display List		
Scroll Time [Secs] 5		
Display ID	Channel name	Description
88	Display Test	All LED segments are turned on
4	Time(hh:mm)	The current time
5	Date	The current date
7	kWh Imported Total	The total import of electricity (consumption)
10	kWh Imported Total Current Rate A	The total import of electricity (consumption) at rate A
20	kWh Imported Total Current Rate C	The total import of electricity (consumption) at rate C
30	kWh Imported Total Current Rate B	The total import of electricity (consumption) at rate B
40	kWh Imported Total Current Rate D	The total import of electricity (consumption) at rate D
99	Error	Meter error encountered

How to read your single-Phase Meter

For Meter Codes 0158, 0181, 0200 and 0258

Standard Channel list

Alternative 1 Display List		
Scroll Time [Secs] 5		
Display ID	Channel name	Description
15	KW Import Rate A	
25	KW Import Rate C	
42	Firmware Revision	Software version installed on the meter
47/107	kWh Exported Total	The total export of electricity across all rates (generation)
50	kWh Exported Total Total Current Rate A	The total export of electricity at rate A
60	kWh Exported Total Total Current Rate C	The total export of electricity at rate C
71	kWh Exported Total Total Current Rate B	The total export of electricity at rate B
71	Voltage / Voltage Phase A	Voltage on Phase A (or just voltage in a single phase connection)
72	Voltage Phase B	Voltage on Phase B
73	Voltage Phase C	Voltage on Phase C
98	Firmware Revision	Software version installed on the meter
93	Power Factor Total	A measure of the efficiency of your installation. Reads somewhere between 0 and 1 (i.e. 0.9) and can be affected by devices that build up but not necessarily "use" power, e.g. capacitors or inductors.
88	Display Test	All LED segments are turned on