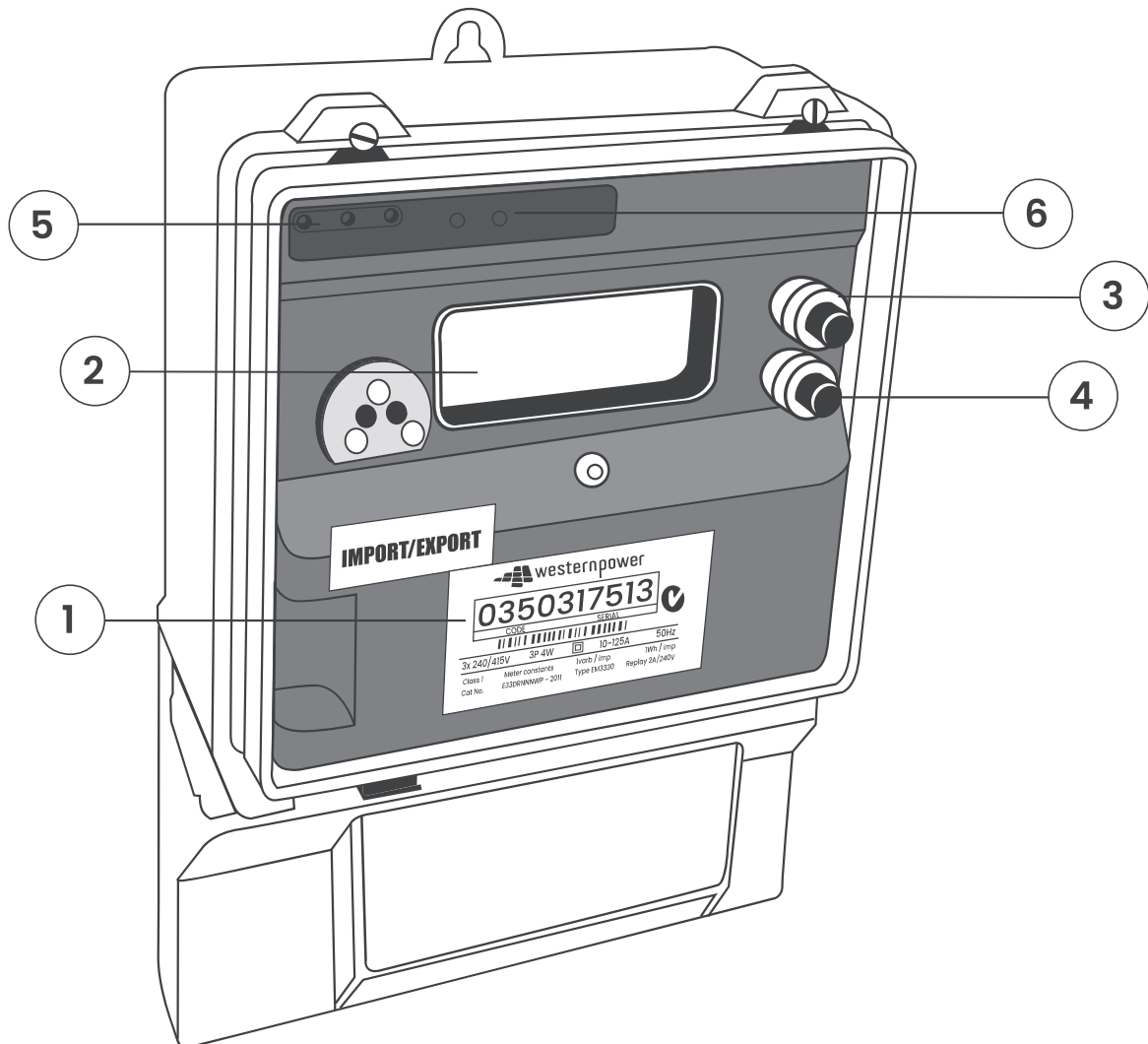


How to read your Three-Phase Meter

For Meter Codes 0150 and 350

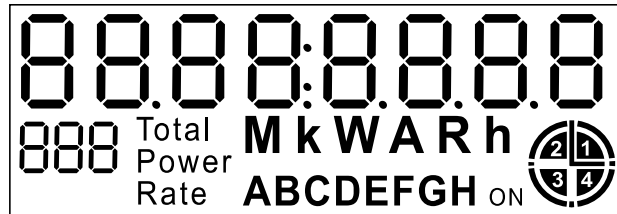


- 1 Meter number** – This is a number unique to this meter, if you have an outage or we need to quickly identify your property, this is the best number to use. The first four digits also identify the model of the meter.
- 2 LCD display** – Displays a cycle of information, primarily the current accumulated usage by this meter.
- 3 Cycle/Scroll button** – Tap this button to scroll to the next channel (on 0150 meters this button is disabled).
- 4 Alt button** – Press and hold this button for two seconds to access the alternate channels. (on 0150 meters this button is disabled).
- 5 Phase lights** – These lights indicate when all three phases are connected and energised. If you have only partial power to your property, these lights may help you determine if the fault is with the network or within your own property.
- 6 Pulse Indicators** – These lights pulse on & off when electricity is being consumed; pulses get faster as electricity consumed increases

How to read your Three-Phase Meter

For Meter Codes 0150 and 350

The display will rotate through the programmed channels, identified by the channel number in the Left of the display. Pressing and holding the Alt button (0350 Only) will shift the display to the alternate channels. Pressing the reset button will return to the standard channels and to the initial display.



The channels available on your digital meter are determined by the tariff you selected for your electricity account.

The information on your meter is not appropriate for customer identification or diagnosis of electrical problems – always refer any electrical work in your home to an electrician, and report power outages, electric shocks or electrical hazards to Western Power.

Standard channel list

Normal Display List		
Scroll Time [Secs] 5		
Display ID	Channel name	Description
88	Display Test	All LED segments are turned on
4	Time(hh:mm)	The current time
5	Date	The current date
7	kWh Imported Total	The total import of electricity (consumption)
10	kWh Imported Total Current Rate A	The total import of electricity (consumption) at rate A
20	kWh Imported Total Current Rate C	The total import of electricity (consumption) at rate C
30	kWh Imported Total Current Rate B	The total import of electricity (consumption) at rate B
40	kWh Imported Total Current Rate D	The total import of electricity (consumption) at rate D
99	Error	Meter error encountered

How to read your Three-Phase Meter

For Meter Codes 0150 and 350

Standard Channel list

Alternative 1 Display List		
Scroll Time [Secs] 5		
Display ID	Channel name	Description
15	KW Import Rate A	
25	KW Import Rate C	
42	Firmware Revision	Software version installed on the meter
47/107	kWh Exported Total	The total export of electricity across all rates (generation)
50	kWh Exported Total Total Current Rate A	The total export of electricity at rate A
60	kWh Exported Total Total Current Rate C	The total export of electricity at rate C
71	kWh Exported Total Total Current Rate B	The total export of electricity at rate B
71	Voltage / Voltage Phase A	Voltage on Phase A (or just voltage in a single phase connection)
72	Voltage Phase B	Voltage on Phase B
73	Voltage Phase C	Voltage on Phase C
98	Firmware Revision	Software version installed on the meter
93	Power Factor Total	A measure of the efficiency of your installation. Reads somewhere between 0 and 1 (i.e. 0.9) and can be affected by devices that build up but not necessarily "use" power, e.g. capacitors or inductors.
88	Display Test	All LED segments are turned on

How to read your Three-Phase Meter

For Meter Codes 0150 and 350

Standard Channel list

Alternative 2 Display List		
Scroll Time [Secs] 6		
Display ID	Channel name	Description
1	Serial No First 7	Meter serial number first 7 digits
2	Serial No Mid 7	Meter serial number remaining digits
3	Program File ID	ID of the current program installed on the meter
9	Number of Demand Resets	
51	Voltage / Voltage Phase A	Voltage on Phase A (or just voltage in a single phase connection)
52	Voltage Phase B	Voltage on Phase B
53	Voltage Phase C	Voltage on Phase C
59	Power Factor Total	A measure of the efficiency of your installation. Reads somewhere between 0 and 1 (i.e. 0.9) and can be affected by devices that build up but not necessarily "use" power, e.g. capacitors or inductors.
61	Amps Phase A	Current (in Amps) on Phase A
62	Amps Phase B	Current (in Amps) on Phase B
63	Amps Phase C	Current (in Amps) on Phase C
74	Program File Version	Version number of the current program installed on the meter
77	Current rate	
78	Current Season	
172	Number of Power Outages	How many times the meter has lost power from the the network
173	Duration of all outages	Accumulated time meter has been without power
174	Start Time of Last Outage	Start Time of Last Outage
175	Start Date of Last Outage	Start Date of Last Outage
177	Current time of use Rate	
99	RSSI Inst / Error	Meter error encountered
88	Display Test	All LED segments are turned on
0	Flagged Warnings	Connection quality and safety warnings