



# Major Customer Connections

Insights Data

Project data quarterly update – December 2025



# Summary

For our major customers with large-scale grid connection opportunities, this report will provide information on the following:

- Volume of project work being undertaken
- Average timeframes for each project phase
- Data relating to project type, industry, and region

New and improved major customer connection processes were implemented on July 1, 2024. Western Power anticipates reduced timelines between the project stages with these new processes. However, the data presented in this slide pack is based on historical averages and does not reflect the expected timeframes for the new projects. Until more data is available, these are historical views of customer and Western Power timelines.

- Inactive projects have been excluded from the report
- These data insights will be updated where appropriate and published each quarter.



# Data Definitions

## Project Phases

**Enquiry** - The Enquiry phase provides guidance on the information required to complete a Connection Application form. An Enquiry Assessment will assist you to identify a suitable network connection point and evaluate the feasibility of your project.

**Initiation** - The Project Initiation phase involves identifying network constraints applicable to your application, assessing if your application is competing for network capacity, and identifying viable options to modify the network to meet your requirements.

**Scoping** - The Project Scoping phase involves developing a scope of work for each option to modify the network, assessing each option, and selecting the final technical solution to be implemented.

**Planning** - The Project Planning phase involves Western Power preparing business cases, contracts, preliminary designs and estimates, and construction plans for the final technical solution to modify the network.

**Construction & Commissioning** - The required network modifications are then constructed and commissioned by Western Power under the terms of the Interconnection Works Contract (IWC).

**Close out** – Once constructed and commissioned, we can formally close out the project.

## Other Definitions

**Time in Each Stage** – the number of calendar months in each stage defined as the time between the change from one stage to the next. (This includes the duration in a stage for a project that has passed that stage i.e. a project in Construction will have a days in stage for all preceding stages)

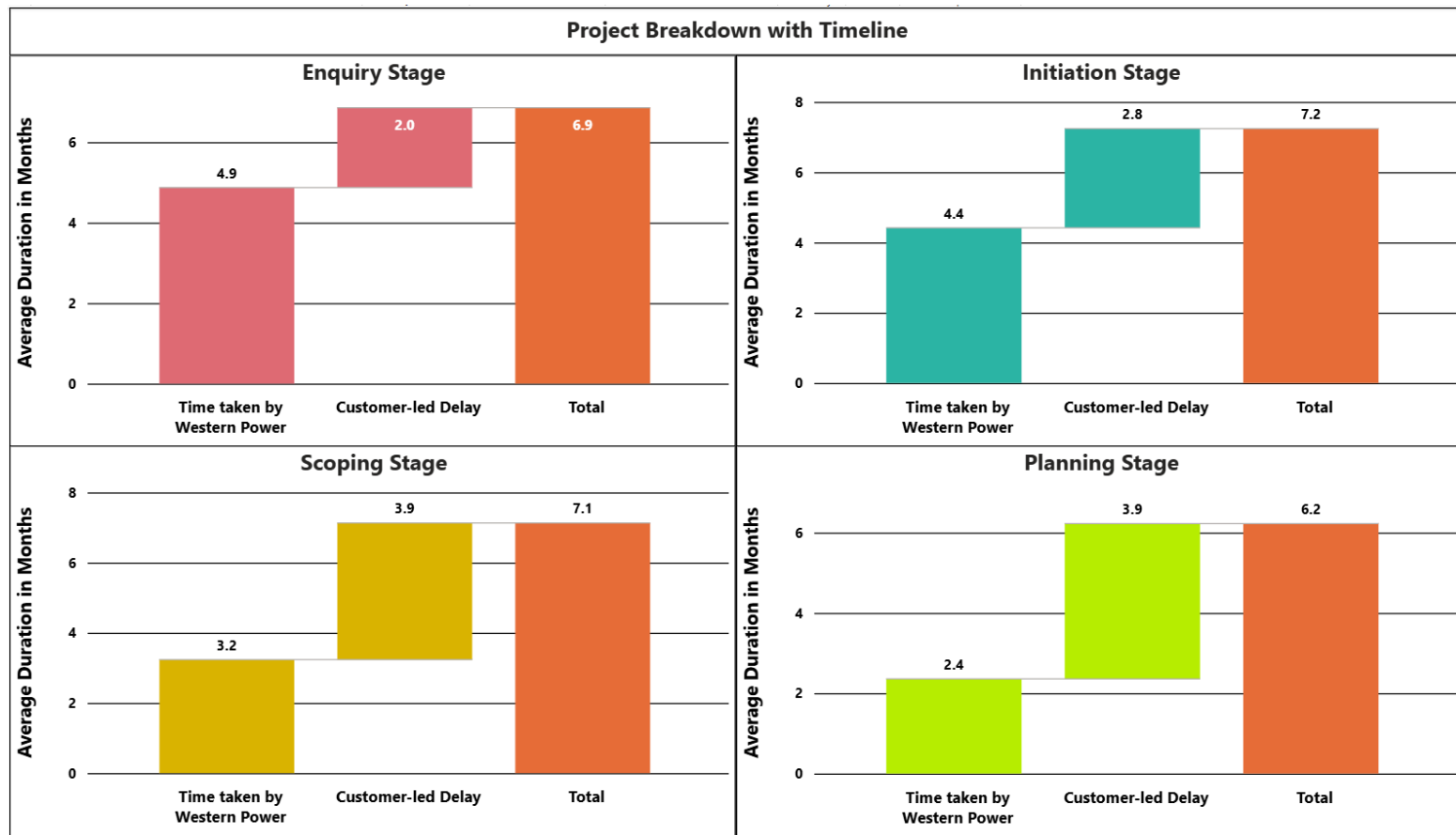
**CMD** – Contracted Maximum Demand (Load)

**DSOC** – Declared Send Out Capacity (Generation)

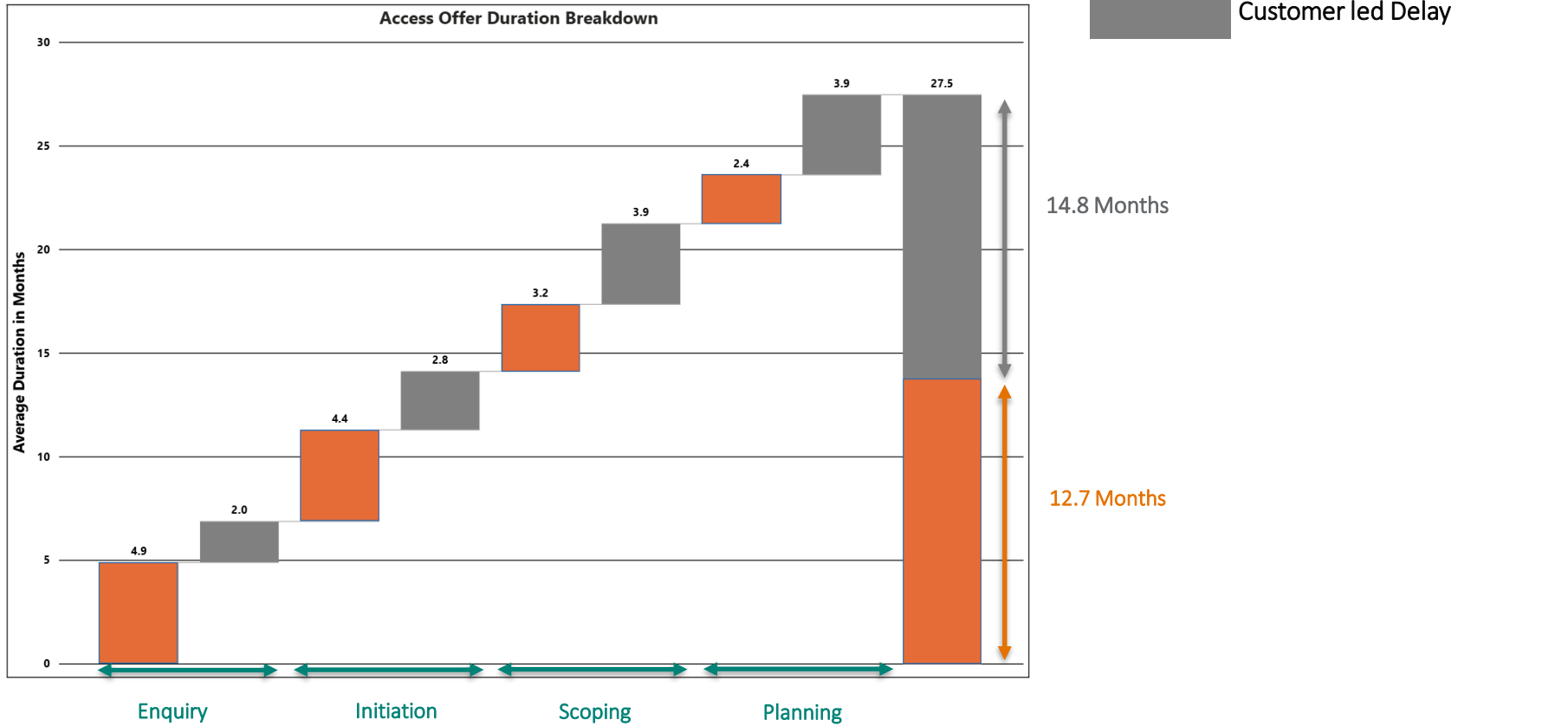
**Access Offer** - Form of contract developed under this applications and queuing policy which has been signed by Western Power and is in such a form that it can, without anything else being required, become an access contract when signed by an applicant.



# Time in Each Stage



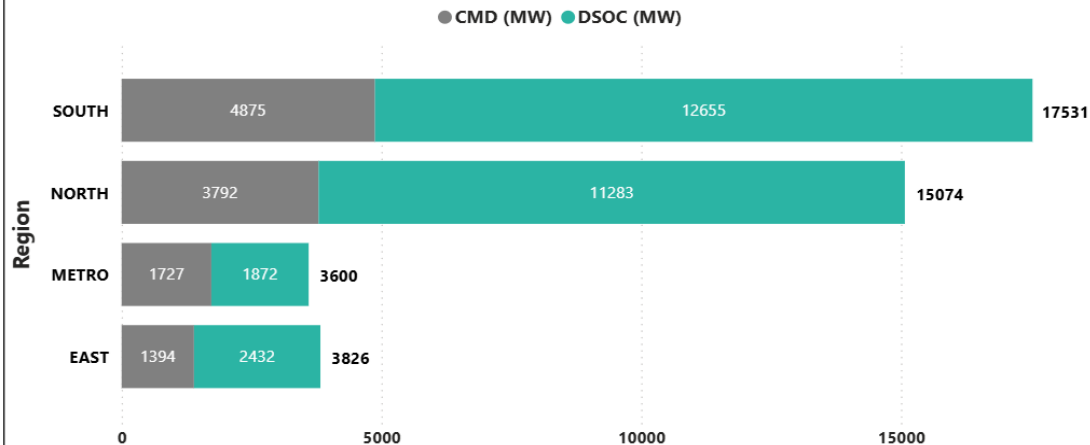
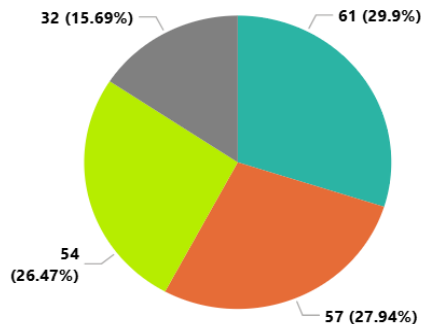
# Access offer Duration



# Project Distribution (Phase & Region)

Connection Type	BESS			Generator			Generator & BESS			Generator, Load & BESS			Load			Load & BESS			Load & Generator			Total		
Active Stage	Projects	DSOC (MW)	CMD (MW)	Projects	DSOC (MW)	CMD (MW)	Projects	DSOC (MW)	CMD (MW)	Projects	DSOC (MW)	CMD (MW)	Projects	DSOC (MW)	CMD (MW)	Projects	DSOC (MW)	CMD (MW)	Projects	DSOC (MW)	CMD (MW)	Projects	DSOC (MW)	CMD (MW)
1. Enquiry	13	1567	1565	18	8993	0	9	2228	1744	3	584	376	20	0	963				9	155	156	72	13526	4803
2. Initiation	12	1527	1526	28	6176	5	7	2041	1539	4	12	56	11	0	889	1	0	2	5	11	10	68	9766	4027
3. Scoping	1	330	330	5	615	0	1	200	100				7	0	154				3	400	423	17	1545	1007
4. Planning				8	1142	0							3	0	81				1	3	4	12	1145	85
5. Construction & Commissioning	8	1680	1680	12	536	65							9	0	93				2	43	6	31	2259	1843
6. Close Out													3	0	21				1	2	1	4	2	22
<b>Total</b>	<b>34</b>	<b>5104</b>	<b>5101</b>	<b>71</b>	<b>17460</b>	<b>70</b>	<b>17</b>	<b>4469</b>	<b>3383</b>	<b>7</b>	<b>596</b>	<b>432</b>	<b>53</b>	<b>0</b>	<b>2201</b>	<b>1</b>	<b>0</b>	<b>2</b>	<b>21</b>	<b>614</b>	<b>600</b>	<b>204</b>	<b>28242</b>	<b>11788</b>

Projects by Region

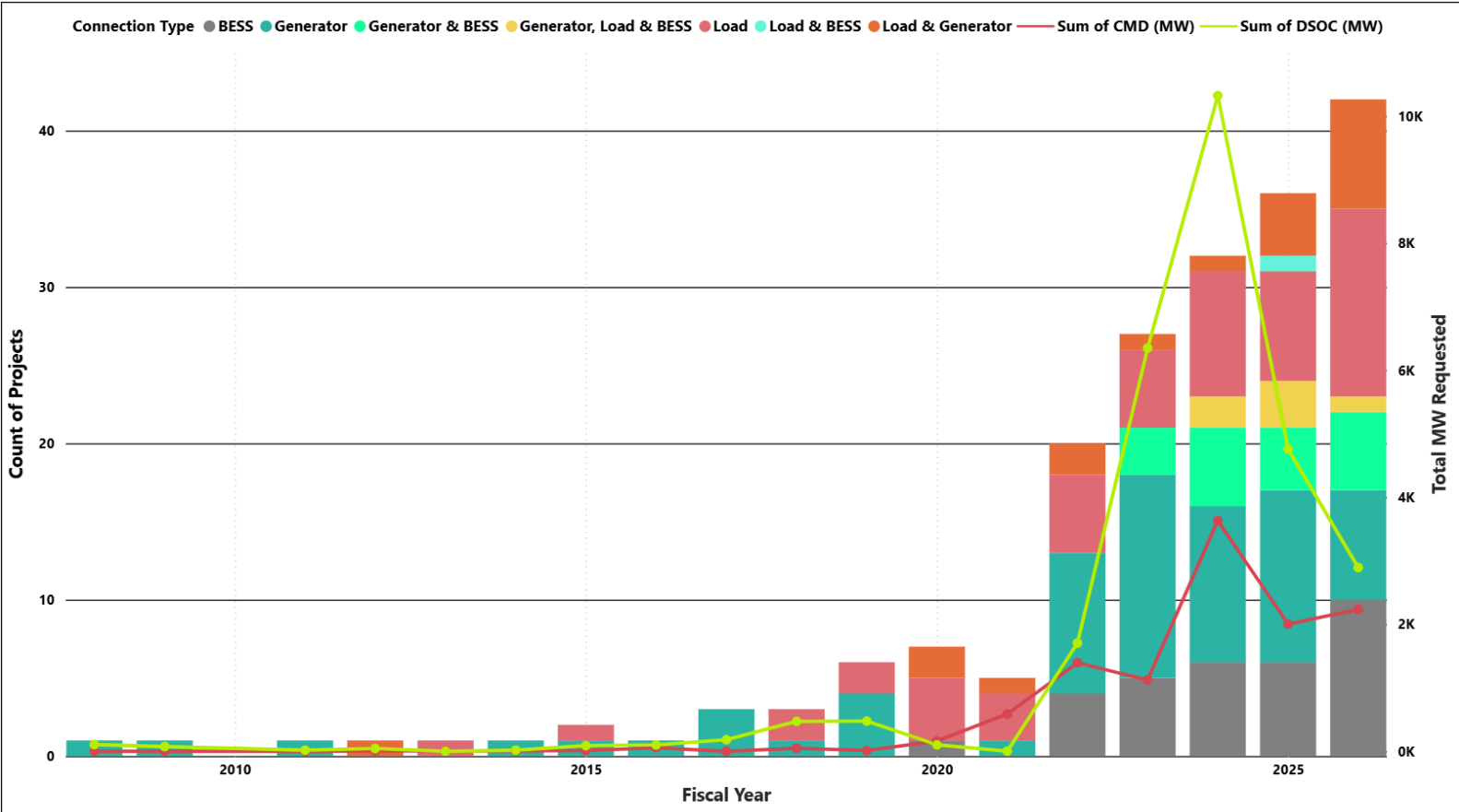


# Project Distribution (Industry)

Connection Type	Projects	DSOC (MW)	CMD (MW)
<b>BESS</b>			
Battery	30	4452	4450
Generation - Other Renewable	3	552	551
Other services	1	100	100
<b>Generator</b>			
Generation - Non-Renewable	17	1777	5
Generation - Other Renewable	5	576	4
Generation - Solar Farm	10	534	55
Generation - Wind Farm	32	14527	6
Industrial Manufacturing	1	4	0
Mining	3	37	0
Other services	1	5	0
Transport	2	0	0
<b>Generator &amp; BESS</b>			
Battery	4	1101	1200
Generation - Other Renewable	3	278	155
Generation - Solar Farm	8	1690	1594
Generation - Wind Farm	2	1400	434
<b>Generator, Load &amp; BESS</b>			
Generation - Other Renewable	2	1	50
Generation - Wind Farm	1	324	324
Industrial Manufacturing	1	0	0
Mining	1	260	52
Other services	1	1	2
Transport	1	10	4

Connection Type	Projects	DSOC (MW)	CMD (MW)
<b>Load</b>			
Data Centre	6	0	390
Generation - Other Renewable	1	0	1
Government services	12	0	610
Industrial Manufacturing	5	0	262
Mining	16	0	776
Other services	3	0	6
Transport	7	0	105
Utilities	3	0	50
<b>Load &amp; BESS</b>			
Government services	1	0	2
<b>Load &amp; Generator</b>			
Generation - Non-Renewable	2	0	15
Generation - Other Renewable	6	204	165
Generation - Solar Farm	2	400	400
Generation - Wind Farm	1	3	2
Government services	2	1	0
Industrial Manufacturing	2	0	8
Mining	4	4	8
Other services	2	1	3

# Enquiries Over Time



# Quarterly Overview

## Movements in this quarter

New Enquiries	Access Offers Issued
23	3

New Connection Applications
6

Stage Change	Project Count
Enquiry to Initiation	6
Initiation to Scoping	5
Scoping to Planning	2
Planning to Construction	2
Construction to Close Out	1