

Western Power's South West Interconnected System    Horizon Power network



### Who delivers electricity to the rest of the state?

Horizon Power supplies electricity to all parts of Western Australia that lie outside of the SWIS. This includes the Kimberley, Pilbara and parts of the Mid West and Goldfields region.

Unlike Western Power, Horizon Power generates the electricity,

delivers it to homes and sends out the bill. They are responsible for the entire electricity supply process outside of Western Power's network.

The map above shows who supplies the electricity in your area. Alternatively you can visit [www.westernpower.com.au](http://www.westernpower.com.au)

## Western Power

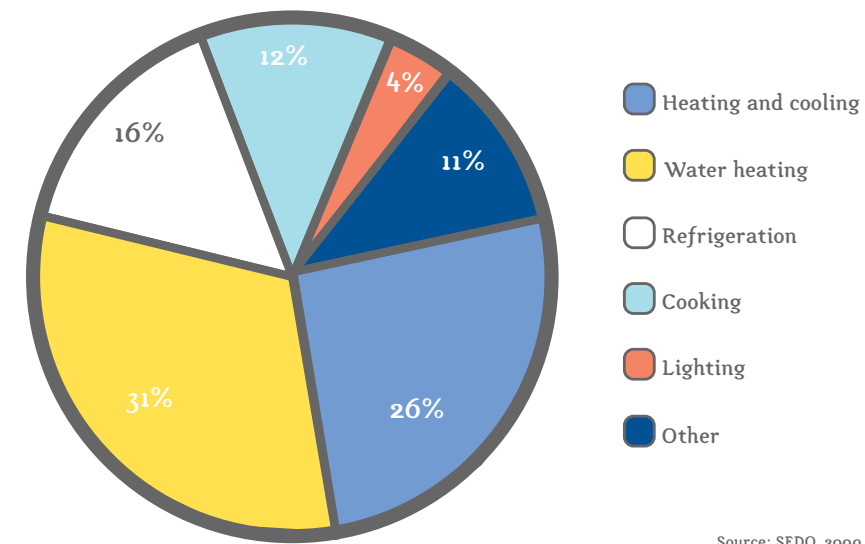
Western Power is an energy solutions business, responsible for the transmission and distribution of electricity in the south west of WA, including Perth.

Consisting of nearly 88,000 km of powerlines stretching from Kalbarri in the north, Kalgoorlie in the east and Albany in the south, our electricity network is one of the largest isolated networks in the world.

Every day we power more than 965,000 homes and businesses and around 150,000 streetlights.

By closely monitoring the amount of electricity flowing in the South West Interconnected System (SWIS) and carrying out regular maintenance, we ensure the network is safely meeting the energy needs of all our customers.

Typical energy use in WA households



Source: SEDO, 2009

## Important numbers

Below is a list of important contact details should you require assistance or information regarding powerlines in your area.

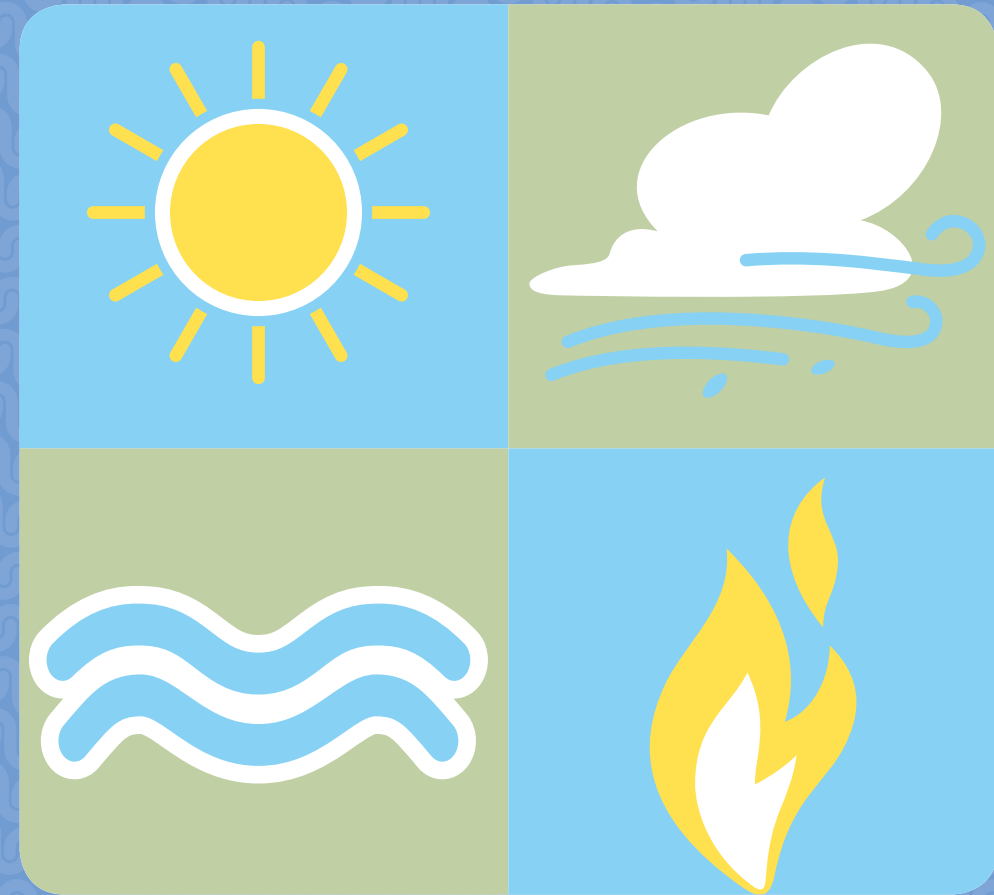
Faults and emergencies, power interruptions, estimated restoration times (24 hrs)	13 13 51
Streetlights out (24 hrs)	1800 622 008
Report vandalism (24 hrs)	13 13 51
General enquiries	13 10 87
Trees that are close to powerlines	13 10 87
TTY users (speech or hearing impaired only)	1800 13 13 51
Telephone Interpreter Services	13 14 50
Report graffiti (24 hrs)	1800 442 255
Dial 1100 Before You Dig <a href="http://dialbeforeyoudig.com.au">dialbeforeyoudig.com.au</a>	1100
Western Power vegetation management team <a href="mailto:vegetation.management@westernpower.com.au">vegetation.management@westernpower.com.au</a>	
Media enquiries	1300 139 240



363 Wellington Street Perth WA 6000  
GPO Box L921 Perth WA 6842  
T: 13 10 87  
F: 9326 4594  
[www.westernpower.com.au](http://www.westernpower.com.au)

Product Code: 87262993. Printed on 100% recycled paper containing 40% post-consumer and 60% pre-consumer Australian waste; ISO 14001 certified and process chlorine free. MF.WEP0077.10/09

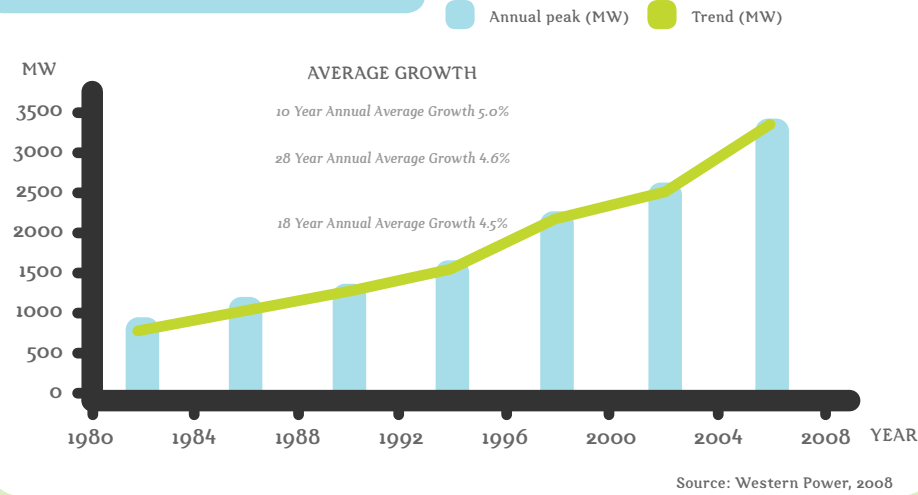
# Power to the people



## Sustainability

As Perth and the South West grow, so too does the demand for electricity. Power consumption in Western Australia has increased by an average of five per cent each year over the last decade, putting enormous strain on the energy network. This is why sustainable energy solutions are important.

Electricity consumption growth in WA



**Western Power's aim is to help reduce environmental impact in two ways:**

Firstly, we work closely with the companies that generate electricity to ensure renewable energy sources such as wind farms, solar cells and hydro-electric dams can be integrated into our network.

Secondly, we work with customers and the community to help reduce electricity consumption and promote energy awareness. This helps ensure the security of your electricity supply and the efficiency of the electricity network in the future.

## The future of power

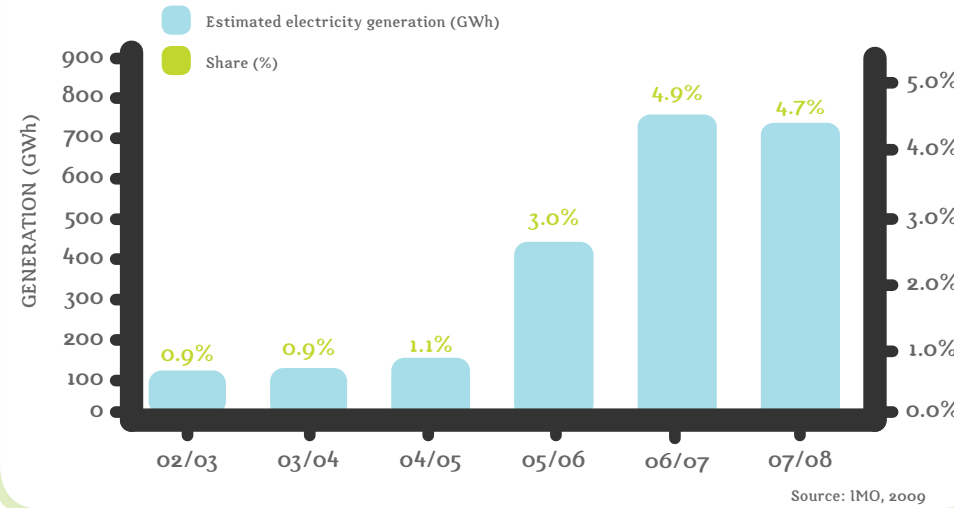
### Smart grid - the future

Western Power is helping to create a sustainable network by developing a smart grid. A smart grid is a network that allows energy to flow in two directions. The SWIS was designed for electricity to flow one way, from the power station to your home. A smart grid will enable homes and businesses to supply energy back into the network.

We are also trialling new technologies such as smart meters, allowing homes and businesses to actively manage their energy usage.

These and other innovations are the future of electricity networks in WA.

Electricity generated from renewable energy in the SWIS



Sources of renewable energy in the SWIS as referenced by this graph are wind, bioenergy and solar PV.

### Where is the electricity generated?

Western Power is responsible for transporting electricity to homes and businesses. You might be wondering where the electricity is actually generated and by whom. The answer is power stations, wind farms, hydro-electric dams and other small-scale sources around the State. These energy supplies are managed by companies such as Verve Energy, Alinta, Newgen, and Goldfields Power.

### What about my electricity bill?

The electricity bill that arrives at your door comes from one of the electricity retailers in WA. For most people this will be Synergy; however some businesses and large electricity consumers will purchase their electricity from companies such as Alinta and Perth Energy.

All of these retailers purchase electricity directly from the generating companies (Verve Energy for example) and use Western Power's network to distribute it to you. The retailers generate and manage your electricity account, measure your usage and send you your bill.

How Western Power transports electricity

