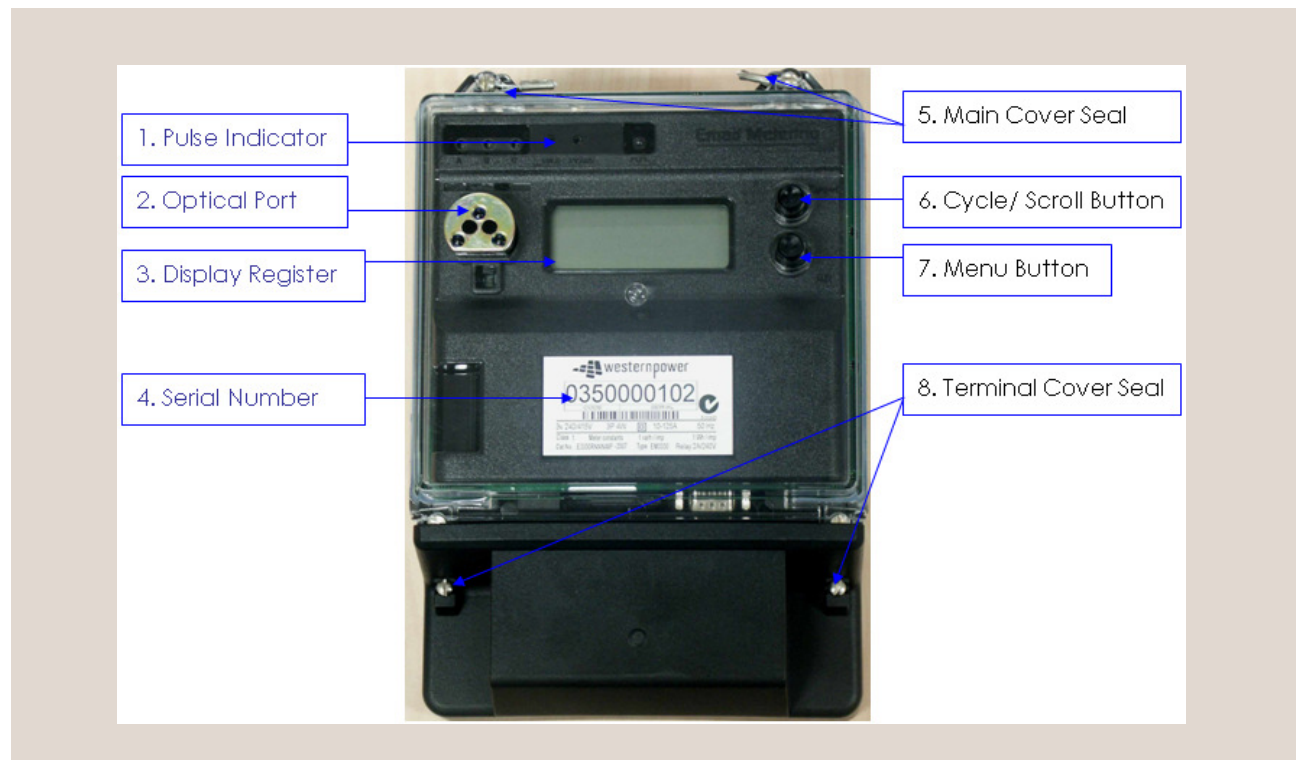


## How to read your EM3330 meter (0350)

The EM3330 is Western Power's standard electronic accumulation meter for residential properties with a three-phase installation (up to 125 amperes) and has the following features:

- LCD for easy viewing of the recorded electricity consumption
- Programmable for both all time and time of use (TOU) tariffs
- Programmable for bi-directional energy measurement
- Capable of storing interval data



### 1. Pulse Indicator

The light (LED) will pulse (on & off) when electricity is being consumed, and these pulses get faster as electricity consumed increases.

### 2. Optical Port

This is the meter's infrared (IR) device, where the authorised Western Power personnel download the data from the meter using an optical probe cable connected to a handheld unit (HHU).

### 3. Display Register

This is the display which shows the total electricity consumed and generated, and for the smart power tariff, it will also display the electricity consumed for the different tariff rates. The meter is also programmed to display the time and date.

### 4. Serial Number

Each meter is assigned with a unique individual serial number. The first four digits are the meter code followed by a six digit serial number.

### 5. Main Cover Seal

The meters are sealed on the main cover at the manufacturing plant. This seal prevents unauthorised personnel from accessing the internal components of the meter.

# How to read your EM3330 meter (0350)

## 6. Cycle/ Scroll Button

This button is used to scroll the register displays in the sequence that they have been programmed in the meter. Each press of the scroll button will show the next register display.

## 7. Menu Button

The menu button will display an alternate set of register displays (ALT 1 and ALT 2). This is where the kWh generated registers are displayed (ALT 1).

## 8. Terminal Cover Seal





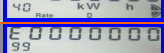

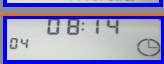
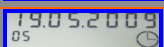

The terminal cover is sealed by Western Power authorised personnel after the meter is installed and wired to the supply from the network.

As a standard three-phase meter, it comes with a default program suitable for A1 and SM1 tariffs. To prevent confusion caused by meter manufacturer programs referring to import and export from the distributor's perspective, Western Power has ceased the use of import/export terminology.

Therefore, consumed/consumption means delivered by the network to the customer, and generated/generation means received by the network from the customer. As such;

### A. Meters programmed for consumption only – all time (A1) and/or time of use smart power (SM1)

- The meter default display is the 'total kWh consumed', which is use for A1 tariff readings, and is the default display unless the scroll button is pressed.
- The readings for SM1 tariff may be viewed by scrolling through the display selection using the scroll button.
- For each press of the button, the display scrolls/moves to the next one.
- The display sequence and corresponding information are listed below;

Description	Channel	Rate	Meter Display
Total KWh Consumed	07		
KWh Consumed Rate A (PEAK)	10	A	
KWh Consumed Rate C (OFF PEAK)	20	C	
KWh Consumed Rate B (WEEKDAY SHOULDER)	30	B	
KWh Consumed Rate D (WEEKEND SHOULDER)	40	D	
Error Code	99		
Display Test	188		
Time	04		
Date	05		

### B. Meters programmed for consumption and generation for renewable energy systems - all time (A1) and/or time of use smart power (SM1)

- The kWh consumed is energy taken from the network by the customer, and the kWh generated is the energy received by the network from the customer.
- The value for the WA net feed-in tariff is Channel 107 - total kWh generated.
- The readings for SM1 tariff may be viewed by scrolling through the display selection using the scroll button.
- The kWh consumed registers are displayed on the normal display, whilst the kWh generated registers are to be accessed on the alternate 1 (ALT 1) display;

## How to read your EM3330 meter (0350)

1. For the normal display (default display), press the 'cycle/scroll button' to move from the current display to the next one.
  2. In order to access/read the kWh generated registers, press the 'menu button' once until 'ALT 1' is displayed on the meter. Once ALT 1 is displayed, wait four seconds for channel 107 (total kWh generated) to be displayed, and press the 'cycle/scroll button' to move to the next register.
  3. The ALT 1 display will return back to the normal display after five minutes. In order to go back to the normal display, you do not need to wait for five minutes, just press the 'menu button' (twice) to return to the normal display or until normal display is shown on the meter.
- The display sequence and corresponding information are listed below;

Description	Channel	Rate	Meter Display
Time	04		04 08:14
Date	05		19:05:2009 05
Total KWh Consumed	07		07 Total kWh
KWh Consumed Rate A (PEAK)	10	A	10 Rate A kWh
KWh Consumed Rate C (OFF PEAK)	20	C	20 Rate C kWh
KWh Consumed Rate B (WEEKDAY SHOULDER)	30	B	30 Rate B kWh
KWh Consumed Rate D (WEEKEND SHOULDER)	40	D	40 Rate D kWh
Total KWh Generated	107		107 Total kWh
KWh Generated Rate A (PEAK)	110	A	110 Rate A kWh
KWh Generated Rate C (OFF PEAK)	120	C	120 Rate C kWh
KWh Generated Rate B (WEEKDAY SHOULDER)	130	B	130 Rate B kWh
KWh Generated Rate D (WEEKEND SHOULDER)	140	D	140 Rate D kWh
Error	99		99
Display Test	188		88888888 Total MWh Rate ABCDEFgh