



Network Standard NS 10-2006.1

Decorative Fixtures, Signs and Banners on Western Power Assets

Technical Requirements for application to
South West Interconnected System (SWIS)

DMS #722409

REVISION HISTORY		
REVISION No.	ISSUE DATE	DESCRIPTION OF AMENDMENT
Draft	Sept 2001	Draft
Original	Feb 2004	Original Issue
Revision 1	Aug 2006	Minor typographical, formatting, branding updates
Revision 2	Dec 2006	Deleted last paragraph of section 6.3

Copyright © 2001-2006, Asset Management – Standards, Policy and Data Quality, Western Power

Apart from any fair dealing for the purposes of study, research, criticism or review, as permitted under the Copyright Act, no part may be reproduced by any process without prior written permission from Western Power.

All correspondence should be directed to:

Asset Management – Standards, Policy and Data Quality
 Western Power
 85 Prinsep Road, Jandakot
 PERTH WA 6164



TABLE OF CONTENTS

1	PURPOSE	1
2	APPLICATION.....	1
3	DEFINITIONS	2
3.1	GENERAL	2
3.2	ABBREVIATIONS.....	2
3.3	REFERENCES	2
4	SAFETY AND WORK SKILLS.....	3
4.1	GENERAL	3
4.2	QUALIFICATIONS REQUIREMENTS	3
4.3	COMPLIANCE WITH ACTS, CODES AND STANDARDS	3
5	ADMINISTRATION.....	4
5.1	GENERAL	4
5.2	RISK MANAGEMENT, INSURANCE AND LIABILITY.....	5
6	ATTACHMENTS.....	6
6.1	GENERAL	6
6.2	SIGNS.....	7
6.3	BANNERS	7
6.4	STEEL LATTICE TOWERS.....	7
6.5	TRANSMISSION ASSETS	7
7	ELECTRICAL ATTACHMENTS.....	8
7.1	GENERAL	8
7.2	OTHER REQUIREMENTS	9
8	APPENDIX A - DOUBLE POLE TWO FUSEWAY CUTOUT.....	10
9	APPENDIX B - ELECTRICAL ATTACHMENT GENERAL ARRANGEMENT.	11

1 Purpose

This Standard defines the requirements for the attachment of fixtures, fittings, signs and banners on Western Power Corporation's poles and streetlight columns in the South West Interconnected System.

The applicant shall be responsible for ensuring that these Technical Requirements are met.

2 Application

Written approval shall be obtained from Western Power for each attachment within the scope of this standard prior to its attachment to a Western Power asset (unless notified otherwise by Western Power).

Where the fixture, fitting, sign or banner requires connection to Western Power's electricity supply, Western Power does not guarantee continuity of supply. Quality of electricity supply is covered by the Western Power publication 'Quality of Electricity Supply'.

The Owner of any fixture, fitting, sign or banner shall accept full responsibility for ensuring that all the relevant requirements of this Standard are met.

Western Power reserves the right to modify or change this Technical Standard without notice. It is the Applicant's responsibility to ensure that they have the latest version of this standard at the time of application. Other factors not covered by this standard may preclude the attachment of fixtures, fittings, signs or banners to Western Power Corporation's poles and streetlight columns.

3 Definitions

3.1 General

Applicant	Any organisation or individual requesting permission to attach decorative fixtures, signs or banners to a Western Power Network Asset.
Attachment	Is any fixture, fitting, sign or banner to be fixed to a Western Power pole or streetlight column and which has no electrical connection.
Designated Contract	The Owner or Owner's Agent who will be undertaking the works of an attachment.
Electrical Contractor	Contractor who holds a current Electrical Contractors Licence.
Electrical Attachment	Is any fixture, fitting, sign or banner to be fixed to a Western Power pole or streetlight column that requires an electrical connection eg. festive decorations, floodlights, illuminated street signs etc.
Pole	A Western Power asset used for the support of aerial network equipment.
Streetlight Column	A Western Power asset used for the support of streetlights only (generally a galvanized or coloured steel construction).
WP	Western Power

3.2 Abbreviations

AS/NZS	Australian Standards/New Zealand Standards
---------------	--

3.3 References

AS 1742.5	Street name and community facility name signs
AS/NZS 3000	Electrical Installations (known as Wiring Rules)
AS/NZS 3100	Approval and test specification – General requirements for electrical equipment.

4 Safety and Work Skills

- 4.1 General** Suitably trained Contractors shall undertake all work in accordance with the "Policy and Procedures for Contractor Safety". As a minimum, contractors must have completed the training modules specified herewith in order to be reviewed for Western Power approval.
- 4.2 Qualifications Requirements** All personnel that are engaged to perform any work to fit and electrical attachments are required to:
- (a) hold a current Western Australian 'A' grade Electrical Workers license and work under the supervision of a licensed Electrical Contractor;
 - (b) have passed the Western Power Training Services approved course in Street Lighting Maintenance (Course ID 151); and
 - (c) be licensed to operate an Elevated Work Platform to WorkSafe Western Australia requirements
- 4.3 Compliance with Acts, Codes and Standards** All personnel that are engaged to perform any work to fit and electrical attachments are required to comply with the following:
- (a) The Occupational Safety and Health Act.
 - (b) Western Australian traffic act and Police department requirements for traffic control, in conjunction with Western Power code of practice for traffic control.
 - (c) Work Safe – Guidelines on approaching live conductors for mobile crane and elevating platform operators. All aerial work shall be carried out from an Elevated Work Platform. Ladders shall not be placed against poles or streetlight columns.
 - (d) Western Power's Electrical Safety Instructions Manual.
 - (e) Western Power's Procedures for Contractor Safety.
 - (f) Wearing of protective gloves, clothing, footwear, safety glasses and helmets.
 - (g) All equipment, street light circuits and conductors shall be treated as live until proven dead.

5 Administration

5.1 General

- (a) In order to apply for approval for a fixing to Western Power' Network Assets, the Applicant shall forward to Western Power the following documentation:
- A representation of the intended attachment to allow Western Power to assess the application. This may be in the form of a sketch, worded description or photograph(s) of similar attachments. This shall include the windage area and weight of the proposed Attachment.
 - A letter endorsing the attachment by the Local Government Authority and/or other appropriate governing bodies eg. school.
 - A detailed description of the asset to which the attachment will be fixed eg. exact location, type etc. to allow Western Power to precisely identify the asset and confirm Western Power's ownership of the asset.
 - Written acknowledgment that the requirements of this standard have been understood and have been/will be complied with.
 - In the case of electrical attachments, the following additional information is required:
 - Load type and load rating of proposed Electrical Attachment.
 - Method of control/switching and daily operating cycle of proposed Electrical Attachment.
- (b) Written approval must be obtained from Western Power for each proposed attachment within the scope of this standard (unless explicitly advised by Western Power).
- (c) Once approved, the attachment may not deviate from the originally submitted design without prior approval of Western Power.
- (d) A separate Un-Metered Supply (UMS) application shall be made for Electrical Attachments. The process is not within the scope of this standard. A copy of the relevant Western Power documentation is available upon request.
- (e) Western Power reserves the right to approve or reject any application, irrespective of the requirements contained in this document.
- (f) The applicant may be responsible for costs incurred by Western Power in the assessment of attachments where special investigation for suitability is required eg. multiple attachments.

- (g) Western Power may need to undertake works to Network Assets to enable the fitting of the Attachment. The applicant shall be responsible for costs incurred by Western Power for these works. Western Power shall advise of these costs prior to any works being undertaken.
- (h) The applicant shall comply with Western Power's Safety and Environmental Policy which are available at <http://www.westernpower.com.au>
- (i) The applicant shall consider road safety and protection of the work site during site works – particularly when applying artwork to assets on or near roadways. Applicants are referred to WorkSafe's website for further information - <http://www.safetyline.wa.gov.au>

5.2 Risk Management, Insurance and Liability

Western Power requires the applicant to have the following insurances and provide satisfactory evidence of the currency of the policies before commencing any work for an attachment.

- (a) Public Liability Insurance covering all liability to any third party for death, injury and loss of damage to property caused by or attributable to the works of an attachment for a limit of not less than \$10 million.
- (b) (i) Workers Compensation - covering all paid persons who are engaged in the works of an attachment. The policy to be written under Western Australian legislation.

(ii) Voluntary Workers Personal Accident Insurance - Covering all non paid persons who will be engaged in the works of an attachment.
- (c) Motor Vehicle Third Party property insurance - covering all loss or damage to property to any third party caused by or attributable to the use of a motor vehicle in the works of an attachment for a limit of not less than \$10 million.

6 Attachments

6.1 General

All attachments on Western Power' Network Assets must comply with the following conditions:

- (a) Attachments containing commercial artwork and those statements which advantage one business or group, may NOT be located on Western Power assets.
- (b) Fixing to Western Power poles or streetlight columns is to be done in a manner that does not damage the pole/column or its finish. Attachment by welding to steel streetlight columns shall not be used.
- (c) Attachments indicating direction such as street names and community facility name signs may extend from the pole or streetlight column to achieve that purpose. The shape, size and mounting height of such signs shall comply with AS 1742.5.
- (d) Signs that protrude from the pole/column shall:
 - (i) not be fitted between two and three metres from the ground and below any existing street name signs.
 - (ii) not interfere with any of Western Power's existing equipment and/or signage.
- (e) Where Attachments that do not indicate directions (such as fire hydrant, Safety House and Neighbourhood Watch signs) are located on poles, they are to be wrapped around the pole and fixed to prevent protrusion of sharp corners. These must not cover up or obscure any Western Power identification numbering or associated signage.
- (f) Where installed on streetlight columns, Attachments are not required to be wrapped around (as detailed in (e) above). However, all corners shall be rounded and there shall be no sharp edges exposed.
- (g) The Attachments are to be securely fixed so as to not constitute any hazard to the public or Western Power employees. Western Power may require the Owner to refix or remove any or all Attachments that Western Power deems to be a hazard.
- (h) Attachments will not be permitted on poles that support transformers, switchgear, cables or similar operational equipment as determined by Western Power.
- (i) Western Power does not guarantee that assets to which attachments are fixed will remain in their existing locations or configurations.
- (j) If a pole with Attachments is moved, removed or modified to support equipment as per (g) above, Western Power reserves the right to instruct the Owner to remove the Attachment at the Owner's cost or remove the Attachment and return to the Owner's last known address.

- 6.2 Signs** The following signs have been approved for use in the interests of the Community and public safety;
- Safety house signs.
 - School signs.
 - Neighbourhood watch signs.
 - Street Name signs.
 - Bus routes.
 - Fire hydrants.
- 6.3 Banners** Banners are NOT permitted on Western Power poles.
- Banners shall NOT be strung between two poles and/or two streetlight columns or make use of a Western Power pole or streetlight column to support one end of a banner.
- 6.4 Steel Lattice Towers** Attachments are NOT permitted on steel lattice towers.
- 6.5 Transmission Assets** Attachments are not permitted on transmission ($\geq 66\text{kV}$) assets or assets with co-located transmission and distribution equipment.

7 Electrical Attachments

7.1 General

All Electrical Attachments must comply with the requirements of **Class II equipment** as defined in AS/NZS 3100. Class II equipment includes protection against electric shock in the form of double insulation or reinforced insulation and where there is no provision for earthing of accessible metallic parts. [Class I equipment requires the connection of a protective earthing conductor. **Class I equipment shall not be used**].

“A” Grade licensed Electrical Workers at the direction of a licensed Electrical Contractor shall carry out Electrical attachment. The Electrical Worker shall also be authorised to operate an Elevated Work Platform.

As required by the Electricity Licensing Regulations, the Electrical Contractor shall submit completed Preliminary Notice and Completion Notice to the applicable Supply Authority office at the required time.

All Electrical attachments must comply with the following conditions:

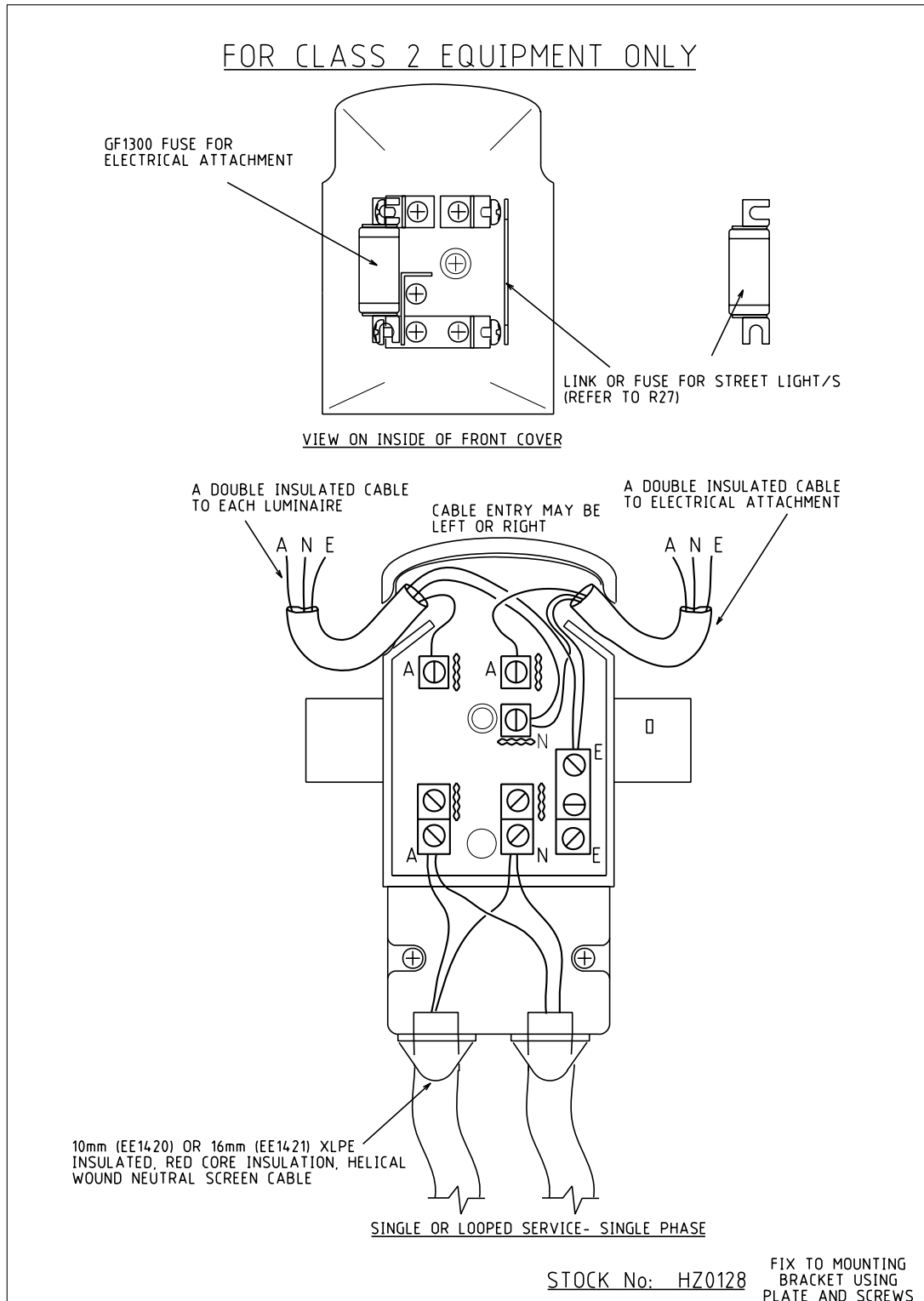
- (a) Electrical Attachments shall be mounted not less than 3 metres from ground level (Street Names excepted).
- (b) Connection cable shall be not greater than 2.5 mm² 2 core Cu PVC insulated/PVC sheathed stranded or flexible (Ordinary or Heavy Duty) cable of circular construction.
- (c) Electrical Attachments permanently installed for continuous display (eg. illuminated street names, floodlights) may be cabled directly to the electrical protection device (Streetlight Cut-out). Refer to Drawing R26/3. These attachments shall include a double-pole isolating switch, for convenient isolation of power for routine maintenance. Refer to Drawing SL020601.
- (d) Temporary or periodic Electrical Attachments (eg. for seasonal or event purposes) must connect to a dust proof, waterproof UV resistant High Impact Plastic encased weatherproof 250 Volt 10 Amp 2 parallel pin outlet. If switched, double-pole switching shall be used. The Electrical Attachment when installed should cover the power outlet. The power outlet shall be cabled directly to the electrical protection device (Streetlight Cut-out). Refer to Drawing SL020601.
- (e) Circuit fuse shall be not greater than 10 amp.
- (f) Electrical Attachments shall be affixed to the streetlight column using stainless steel band straps or similar.


7.2 Other Requirements

The following requirements shall be adhered to at all times

- (a) The electrical installation of an Electrical Attachment shall comply with AS/NZS 3000 for Class II equipment.
- (b) Each Electrical Attachment shall be connected to the Streetlight Cut-Out mounted near the base of the column.
- (c) Only lighting load is allowed as electrical attachments on streetlight columns.
- (d) Electrical Attachments shall not exceed 1000 Watts. Power Factor shall be not less than 0.9.
- (e) Electrical Attachments shall comply with the requirements for Class II equipment defined in AS/NZS 3100 and other relevant Australian Standards.
- (f) A Designated Electrical Contractor shall carryout all the necessary electrical work and connections.
- (g) One only cable access hole (30mm maximum) may be cut/drilled in the column per Electrical Attachment.

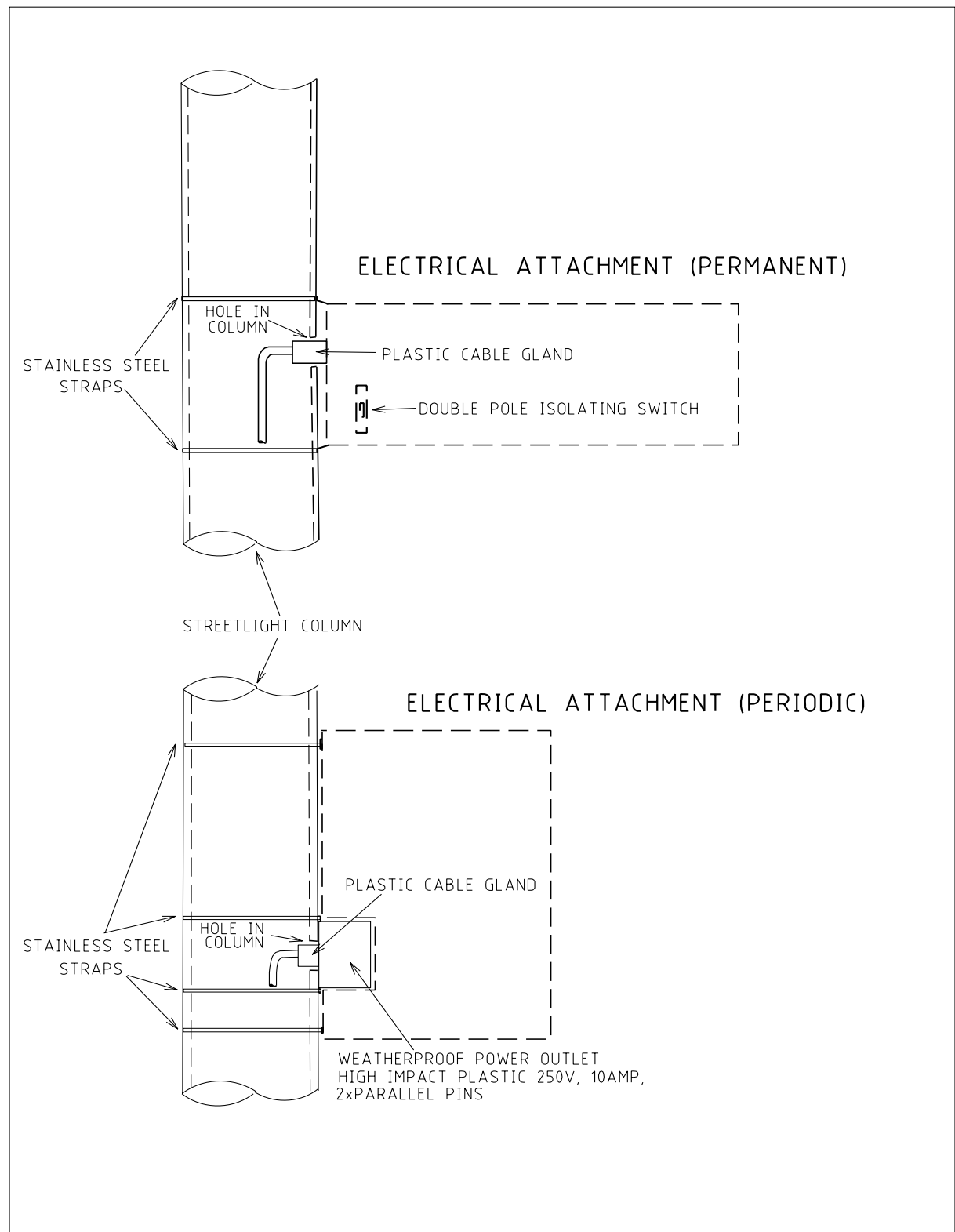
8 APPENDIX A - Double Pole Two Fuseway Cutout.




 westernpower DISTRIBUTION CONSTRUCTION MANUAL NETWORK ASSET MANAGEMENT BRANCH	REFERENCE DRAWING	REVISION	DATE
	STREET LIGHT CUTOUT CONNECTION ARRANGEMENT FOR ELECTRICAL ATTACHMENT		6/11/03
		DRG No.	R26/3

R2602

9 APPENDIX B - Electrical Attachment General Arrangement.



 DISTRIBUTION CONSTRUCTION STANDARDS Network Asset Management Branch	REFERENCE DRAWING	REVISION	DATE 10.06.2002
	ELECTRICAL ATTACHMENTS GENERAL ARRANGEMENT	DRAWING No. SL020601	