

Your smart meter



Western Power is currently trialing around 11,000 smart meters (an advanced metering communication network) in order to assess their viability for wider use in the Western Australian market.

Better visibility

By recording data every 30 minutes, smart meters give Western Power a much more accurate picture of exactly how much energy is being consumed and generated throughout the State at different times of the day. This allows us to plan the network better and use our existing infrastructure more efficiently.

Remote communication

Using the communications network, smart meters also send and receive information remotely, which means Western Power doesn't need to enter private property to read your meter.

Improved reliability

We are also trialing the smart meter as a tool to detect power quality issues, locate network faults and assist maintenance crews to reduce power restoration times.

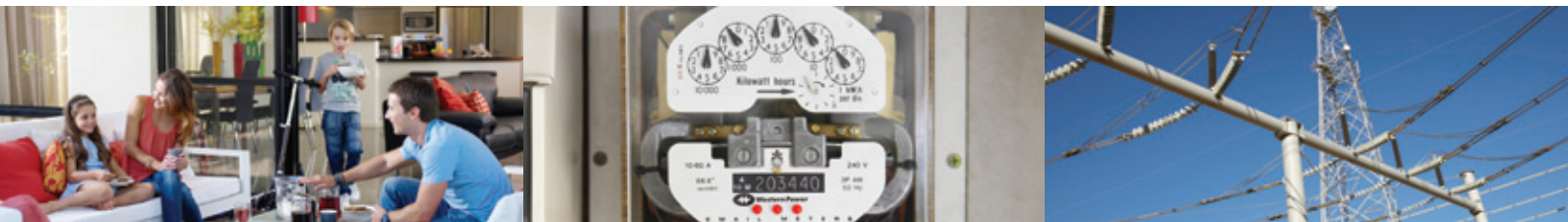
More choice for customers

Smart meters also enable a number of customer applications designed to give you greater visibility, control and choice when it comes to the way in which you use energy.

Smart meters are part of a wider initiative by Western Power called Smart Grid which seeks to take a traditional 'poles and wires' electricity grid into the future by adding digital and communication technology. This makes the grid more flexible and adaptable to your needs.

Learn more about Smart Grid

For more information on Western Power's current Smart Grid program, as well as a look at our vision of a smart grid for the future, please visit westernpower.com.au and click on the Smart Grid link under Network Projects.



Contact information

Faults & emergencies, power interruptions, estimated restoration times (24 hrs)

13 13 51



Telephone Interpreter Services

13 14 50

General enquiries
(7am - 5pm Monday to Friday)


13 10 87

TTY users
(speech or hearing impaired only)

1800 13 13 51

enquiry@westernpower.com.au
westernpower.com.au

363 Wellington Street Perth WA 6000
GPO Box L921 Perth WA 6842

 This information is available in alternative formats on request.

 **westernpower**