



# Baldivis substation Landscaping Design Community Workshop

**February 2010**



# Meeting Purpose

- Provide information on:
  - Options for the landscaping design of the proposed Baldivis zone substation;
- Seek community input into the landscaping design; and
- Answer any queries.

# Agenda

<b>Time</b>	<b>Activity</b>	<b>Who</b>
<b>6.00 pm</b>	<b>Welcome, introductions, meeting overview</b>	<b>Facilitator</b>
<b>6.05</b>	<b>Overview of design concepts &amp; Western Power recommendation</b>	<b>Kathy Craig Western Power</b>
	– Project update	
	– Landscaping - options and implications	
	– Fencing of the substation – options and implications	
	– Western Power’s recommendation	
<b>6.20</b>	<b>Community comment session</b>	<b>All attendees</b>
	– Discussion on landscaping vision and objectives – In this session, community members will be invited to provide comment on the options and recommendations, suggest new options and ideas, and tell us their preferences.	
<b>7.15 pm</b>	<b>Western Power – next steps</b>	<b>Kathy Craig Western Power</b>
	– Timing and next steps for landscaping design	
<b>7.20</b>	<b>Other items</b> – Community will have the opportunity to ask any other questions about the project and make comment	<b>All</b>
<b>7.30 pm</b>	<b>Summary, next steps and close</b>	<b>Facilitator</b>



**Kathy Craig**

Project Coordinator

Western Power

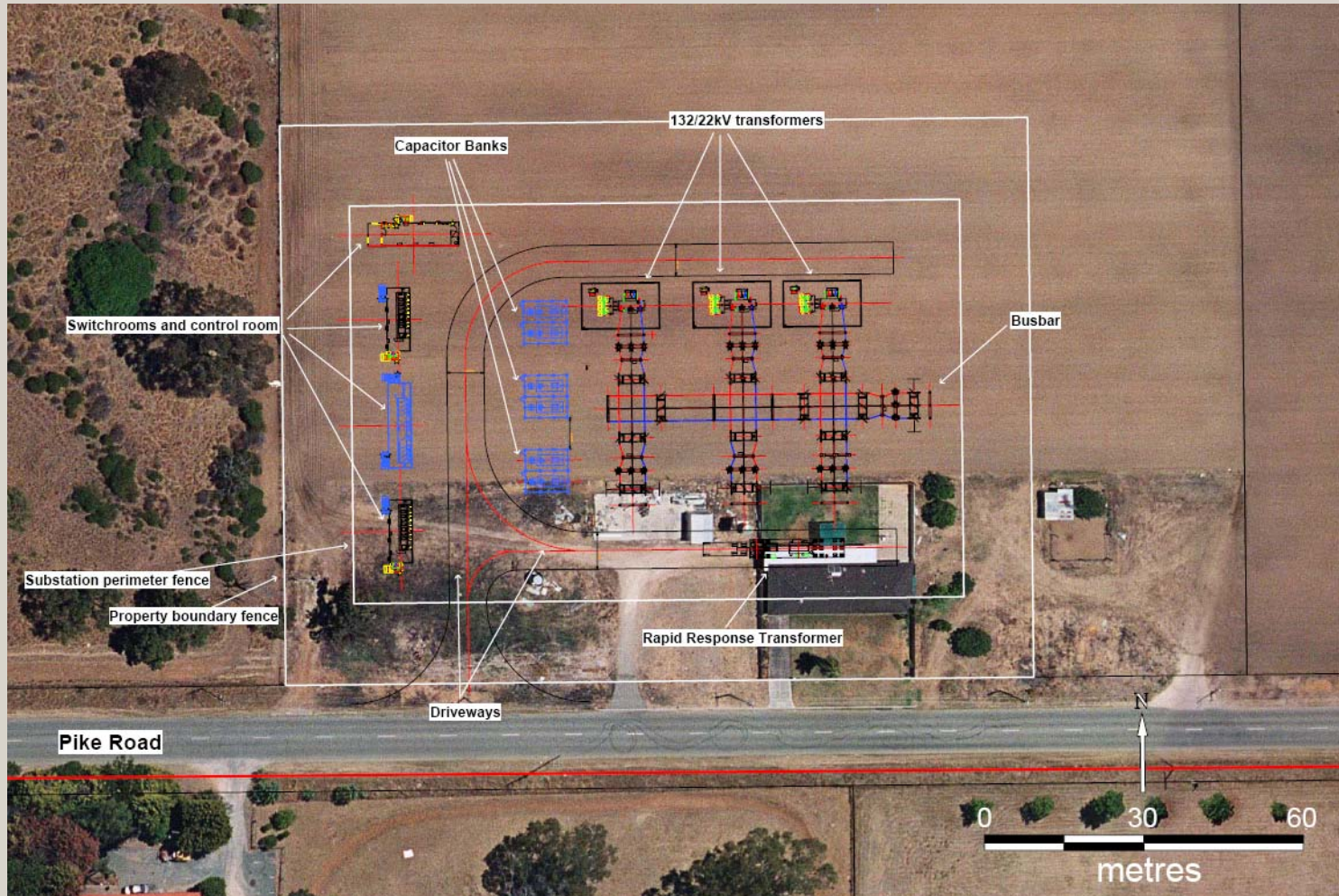
# Project update

- A series of community workshops will be held to assist in determining the fencing and landscaping of the substation
- Subdivision approval has been granted
- Amended Local Structure Plan
- Required in Service date changed to November 2013 allowing additional work in the design process

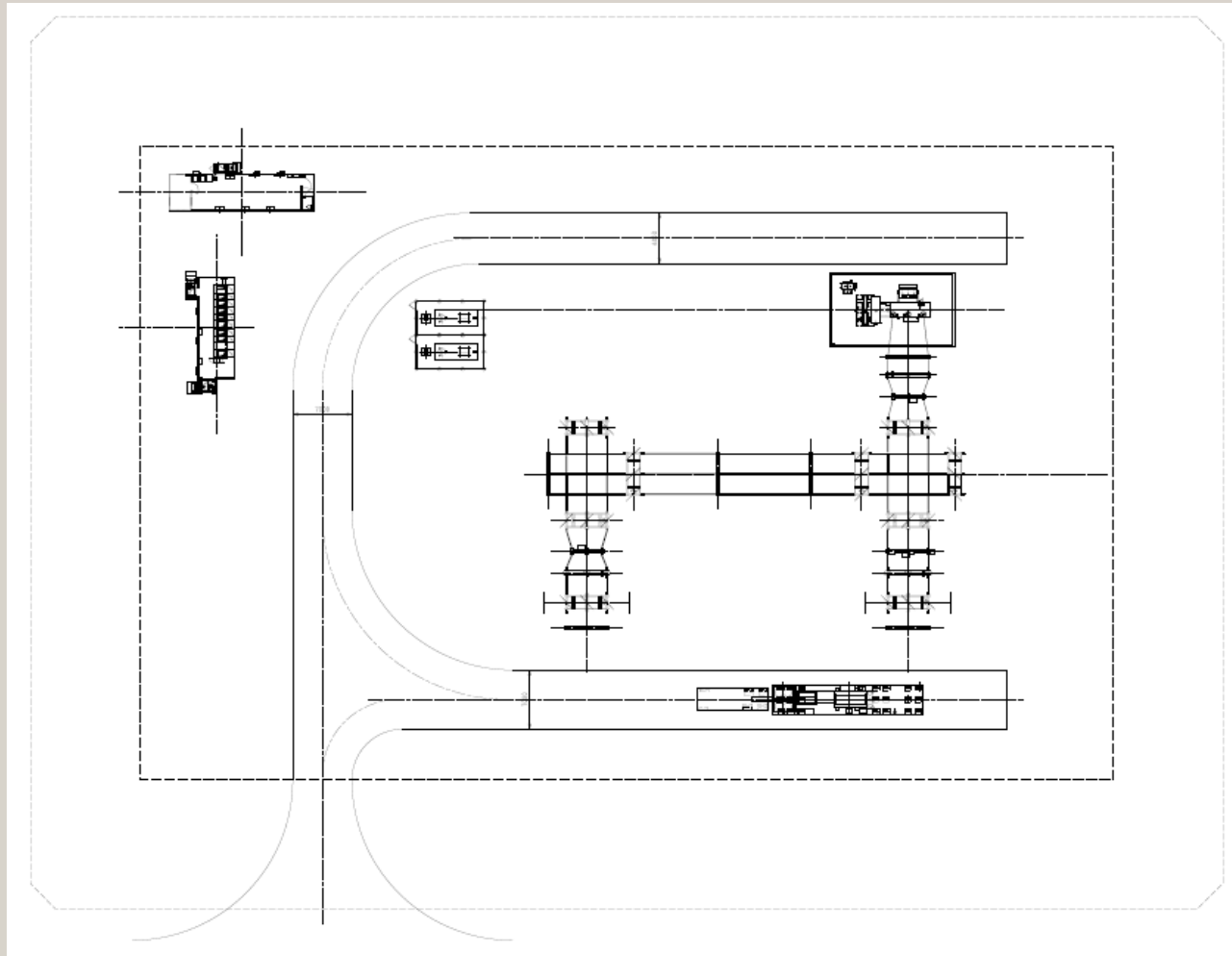
# Design considerations

- Width of buffer zone 13m to 15m
- Road surrounding site
- Positioning of housing (current and future)
- Materials and plants already in use in Settlers Hill
- Security needs of the substation (graffiti and safety)
- Cost – ERA demands use of economically viable materials
- Colours that will blend with the landscape (eg. A block wall can impose a significant impact)
- Substation layout ie. Switch rooms, transformers etc
- Other suggestions by participants.

# Proposed site layout



# Initial Site Layout (subject to change)



# Local structure plan

- Western Power engaged Cardno BSD to review the local structure plan developed for the surrounding area in 2007
- The final draft is still being negotiated with the landowners.

# Example of what it might look like

- Refer to handout showing various substations with different fencing and landscaping options, and a recommendation to assist discussions.

# Community Comment Session

- Landscaping vision & objectives
- Comment on the options presented, new ideas, preferences, likes, dislikes?

# Next steps

- If you have any further feedback please include in your comment sheet and hand it in today
- Concept will be finalised and made available on the Projects section of our website [www.westernpower.com.au](http://www.westernpower.com.au), after which another community workshop will be held.
- If you would also like to receive a hard copy, please indicate on the registration form at the front of the room.
- A Development Application will be submitted in late 2010 to allow a full consultation process.

Other items

# Summary & Close

*Thank you for your input*