

## Environmental Policy

### Our Policy Statement

Western Power is the principal electricity transmission and distribution business in Western Australia. We are committed to operating the network safely, reliably and efficiently, delivering electricity in a manner that meets community needs and expectations.

Accordingly, business activities will be planned and conducted to minimise and where possible avoid adverse effects on the natural environment and social surroundings for the benefit of current and future generations.

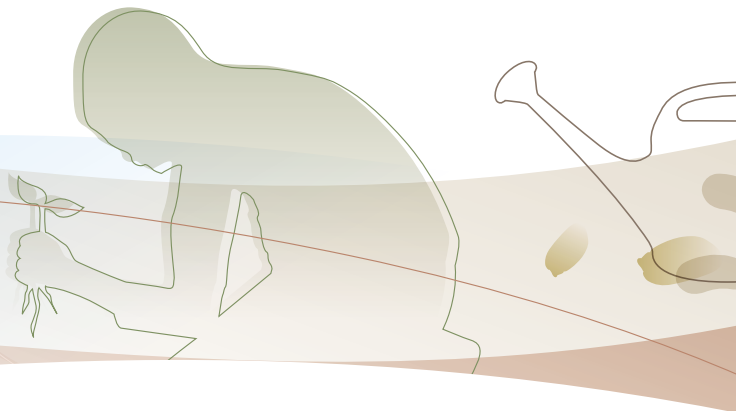
### Our Environmental Objectives

In implementing this policy we will:

- ensure that environmental considerations form part of our business planning and decision-making processes;
- promote a culture of responsible environmental management;
- protect the natural environment and social surroundings, preserve biodiversity, prevent pollution and minimise waste;
- comply with applicable environmental laws and aspire to higher standards within the business;
- continually improve our environmental performance;
- communicate openly and transparently with stakeholders on environmental matters; and
- engage the community in environmental initiatives aligned with our business values.

### Our Environmental Responsibilities

Environmental leadership and adherence to the Western Power Environmental Policy is the responsibility of all Western Power employees and its contractors, suppliers and vendors. The Managing Director and Executive Management are accountable to the Board of Directors for the development and implementation of this policy.



NATIVE  
SEED PACK  
INSIDE

# Plant your own native garden

Western Power has embarked on a new environmental direction towards sustainability. This new direction is challenging the organisation to think openly, as an energy solutions business, providing sustainable energy solutions for its community and employees.

Western Power has adopted sustainable development practices to meet the needs of the present without compromising the ability of future generations to meet their own needs.

We will achieve sustainability by balancing economic, social and environmental outcomes. To be successful, we are integrating sustainability principles into future whole of business planning and governance processes, resulting in a shift from compliance to innovation.

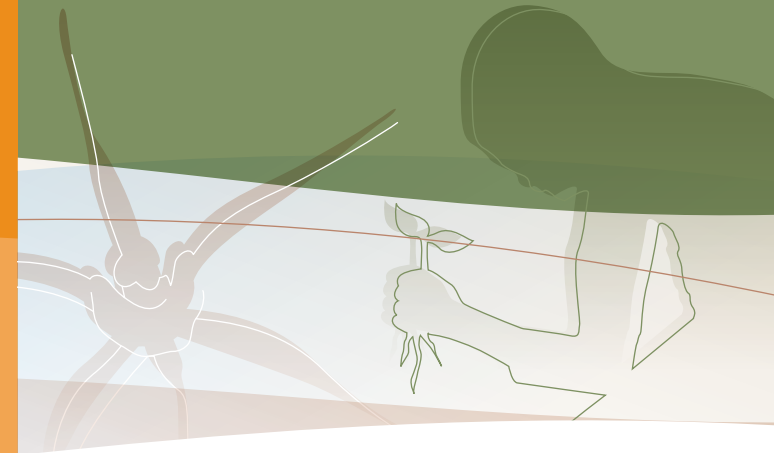
As a leader in environmental management, Western Power is already committed to environmental protection and the preservation of biodiversity for the benefit of current and future generations. We will continue to set a high standard for the electricity supply industry in Australia as we move in this new direction towards sustainability.

Key aspects of Western Power's new sustainability focus include:

- Minimising our environmental footprint through carbon reduction and biodiversity offset programs;
- Supporting communities in sustainable energy solutions by exploring and undertaking demand side management programs; and
- Reducing the social impact of our infrastructure and services through effective stakeholder and community engagement.

### Further Information

Please access [www.westernpower.com.au](http://www.westernpower.com.au) or contact us on 9326 6294 for more information on these exciting new programs.



These seeds hold the promise of a **sustainable native garden**, which will attract birds and small animals. With a variety of heights, shapes and colours they can provide a foundation for any style of garden utilising native, drought-tolerant, powerline friendly plants. Western Power hopes that you enjoy planting these seeds and watching them grow.

grow

### **Native Willow** *Callistachys lanceolata*

This Western Australian native is common in the lower southwest where it is often associated with watercourses. It has deep green leaves growing thickly along the willowy branches. Highly attractive bright yellow to orange flowers occur in small bunches all over it in spring and summer. Generally a very fast grower it develops into a wide spreading, large, dense bush. It can also develop into a tree if there is nearby competition or bottom pruning as it grows.

The Native Willow commonly grows to about 4 metres high by 6 metres wide. It is relatively frost hardy and will grow in most soils but prefers soils that retain some water at depth such as sand over clay or loamy sand. Planting near access to groundwater or surface water is an advantage. In drier areas watering over the first summer is recommended.



#### **Planting Instructions**

- Soak seeds overnight
- Fill pot with soil/potting mix
- Plant seeds 3-5mm deep in the centre of the pot and water
- Place pot in a sunny position and keep soil moist
- Plant in the garden when 5-10cm tall
- Mulch around the base
- Water for the first summer

*Spreading small tree*

### **Sea Urchin Hakea** *Hakea petiolaris*

This attractive large shrub has unusual flowers. These occur prolifically and are golf ball sized but look like soft sea urchins with cream coloured spines radiating densely from a soft pink dense ball. These flowers attract native birds and beneficial insects. The leaves are broad blue-green, randomly curved.

A rounded shrub growing to about 4 metres high, this Hakea is found growing in crevices on granite outcrops in clay or gravel throughout the Darling Ranges extending through the wheatbelt to Hyden. It adapts extremely well in cultivation.



#### **Planting Instructions**

- Fill pot with soil/potting mix
- Plant seeds 3-5mm deep in the centre of the pot and water
- Place pot in a sunny position and keep soil moist
- Plant in the garden when 5-10cm tall
- Mulch around the base
- Water for the first summer

*Spreading shrub*

### **Australian Bluebell** *Billardiera fusiformis*

The soft, bright green, shiny foliage scattered all over with small sky blue drooping flowers make this a welcome feature to any garden. It flowers over long periods but most often from spring though summer. Succulent edible blue-black berries follow flowering. Although it grows to 1.5 metres it can have a width of 2 metres. It is particularly good shelter for small native animals such as skinks, small birds and even Quendas.

This is a quick grower that can twine slightly onto structures or other woody plants nearby to gain some support. One advantage is that it is moderately tolerant of saline soils.



#### **Planting Instructions**

- Fill pot with soil/potting mix
- Plant seeds 1-3mm deep in the centre of the pot and water
- Place pot in a sunny position and keep soil moist
- Plant in the garden when 5-10cm tall
- Mulch around the base
- Water for the first summer

*Twining shrub*

